

CITY OF LOUISVILLE, COLORADO



COMPREHENSIVE ANNUAL FINANCIAL REPORT



FOR THE YEAR ENDED
DECEMBER 31, 2008

This page intentionally left blank.

City of Louisville, Colorado



Comprehensive Annual Financial Report

For the Year Ended December 31, 2008

PREPARED BY:

Department of Finance

Kevin C. Watson, Director of Finance

Lance R. Hillis, Accounting Manager

Barbara J. Kelley, Accountant

This page intentionally left blank.

**City of Louisville, Colorado
Comprehensive Annual Financial Report
For the Year Ended December 31, 2008**

Table of Contents

	<u>Exhibit</u>	<u>Page</u>
Introductory Section:		
Letter of Transmittal		1
Certificate of Achievement for Excellence in Financial Reporting		6
Organization Chart		7
Directory of City Officials		8
Financial Section:		
Independent Auditors' Report		9
Management's Discussion & Analysis		11
Basic Financial Statements		
Statement of Net Assets..... 1		23
Statement of Activities.....2		24
Balance Sheet – Governmental Funds	3	26
Reconciliation of the Balance Sheet to the Statement of Net Assets.....3		29
Statement of Revenues, Expenditures, and Changes in Fund Balances – Governmental Funds.....4		30
Reconciliation of the Statement of Revenues, Expenditures, and Changes in Fund Balances Of Governmental Funds to the Statement of Activities.....4		33
Statement of Net Assets – Proprietary Funds	5	34
Statement of Revenues, Expenses, and Changes in Fund Net Assets – Proprietary Funds	6	36
Statement of Cash Flows – Proprietary Funds.....7		37

**City of Louisville, Colorado
Comprehensive Annual Financial Report
For the Year Ended December 31, 2008**

Table of Contents (Continued)

	<u>Schedule</u>	<u>Page</u>
Financial Section: (Continued)		
Table of Contents for Notes		41
Notes to the Financial Statements		43
Required Supplementary Information		
Budgetary Comparison Schedule General Fund	A	68
Conservation Trust – Land Acquisition Fund.....	B	69
Notes to the Required Supplemental Information.....		70
Other Statements and Schedules		
Combining Balance Sheet – Nonmajor Governmental Funds		76
Combining Statement of Revenues, Expenditures, and Changes in Fund Balances – Nonmajor Governmental Funds..		78
Budgetary Comparison Schedule – Public Access Television		80
Budgetary Comparison Schedule – Parking Improvement Fund		81
Budgetary Comparison Schedule – McCaslin Interchange Fund		82
Budgetary Comparison Schedule – Conservation Trust – Lottery Fund.....		83
Budgetary Comparison Schedule – Impact Fee Fund		84
Budgetary Comparison Schedule – Northwest Parkway Fund		85

**City of Louisville, Colorado
Comprehensive Annual Financial Report
For the Year Ended December 31, 2008**

Table of Contents (Continued)

	<u>Page</u>
Financial Section: (Continued)	
Budgetary Comparison Schedule – Urban Revitalization District Fund	86
Budgetary Comparison Schedule – Library Construction Project Fund	87
Budgetary Comparison Schedule – Library Debt Service Fund.....	88
Budgetary Comparison Schedule – Cemetery Perpetual Care Fund	89
Budgetary Comparison Schedule – Capital Projects Fund	90
Budgetary Comparison Schedule – Water & Wastewater Fund	92
Budgetary Comparison Schedule – Golf Course Fund	93
Combining Statement of Net Assets – Internal Service Funds	95
Combining Statement of Revenues, Expenses, And Changes in Net Assets – Internal Service Funds....	96
Combining Statement of Cash Flows – Internal Service Funds	97
Budgetary Comparison Schedule – Building Maintenance Fund	98
Budgetary Comparison Schedule – Technology Management Fund.....	99
Budgetary Comparison Schedule – Fleet Management Fund	100

**City of Louisville, Colorado
Comprehensive Annual Financial Report
For the Year Ended December 31, 2008**

Table of Contents (Continued)

Statistical Section:	<u>Schedule</u>	<u>Page</u>
Financial Trends.....	1-4.....	103
Revenue Capacity	5-12.....	108
Debt Capacity	13-16.....	116
Demographics	17-19.....	120
Operating Information	20-21.....	123
 Compliance Section:		
Local Highway Finance Report		125



June 22, 2009

Citizens, Honorable Mayor, Members of the City Council:

We submit to you the Comprehensive Annual Financial Report of the City of Louisville for the fiscal year ended December 31, 2008. Responsibility for both the accuracy of the data, and the completeness and fairness of the presentation, including all disclosures, rests with the City. To the best of our knowledge and belief, the enclosed data reflects accurately in all material aspects and is reported in a manner that presents fairly the financial position and results of operations of the various funds and account groups of the City. We have also included all disclosures necessary to enable the reader to gain an understanding of the City's financial activities.

The Comprehensive Annual Financial Report is presented in four sections: Introductory, Financial, Statistical, and Compliance. The Introductory Section, which is unaudited, includes this letter of transmittal, the City's organizational chart and a directory of elected and appointed officials. The Financial Section includes the independent auditors' report on the financial statements and schedules, management's discussion and analysis, basic financial statements, notes to the financial statements, required supplementary information, other schedules, and budgetary comparison schedules. The Statistical Section, which is unaudited, includes selected financial and demographic information, generally presented on a multi-year basis. The Compliance Section contains the Local Highway Finance Report, required by the state. The letter of transmittal is designed to complement the management's discussion and analysis (MD&A) section and should be read in conjunction with it. Louisville's MD&A immediately follows the report of the independent auditors.

This report includes all funds of the City. The Louisville Housing Authority, the Louisville Arts and Humanities Commission, the Louisville Historical Commission, the Louisville Fire Protection District, and the Urban Drainage and Flood Control District do not meet the established criteria for inclusion in the reporting entity, and accordingly are excluded from this report. The Urban Revitalization District does meet the established criteria for inclusion and is, therefore, included within this report.

ECONOMIC CONDITION AND OUTLOOK

The City of Louisville has recently been nationally recognized for its livability. In 2005, the City of Louisville was selected by *Money Magazine* as the Fifth Best City in which to live for the entire United States. In 2006, Frommer's published the 1st Edition of the "Best Places to Raise Your Family" and the City of Louisville was chosen the "Best of the Best" from a list of top 100 affordable communities in the United States. Frommer's is known as one of the most trusted travel guides throughout the world.

The City of Louisville is located in the Denver metropolitan region, approximately 6 miles east of the City of Boulder and 25 miles northwest of Denver. Louisville has an incorporated area of approximately 7.9 square miles and a population of approximately 20,000. The City's residential growth peaked in 1992 and has since slowed significantly as the City nears the target population of about 23,000 that is contained in the Community Vision section of the City's Comprehensive Plan. The City is strongly influenced by the U.S. 36 corridor from Denver to Boulder, and development in adjacent municipalities.

In 2008 ConocoPhillips purchased the 420 acre Storage Tek/Sun Microsystems campus in Louisville. ConocoPhillips is currently deconstructing the 1.6 million square feet of existing buildings on the site and intends to open corporate learning and global technology centers on the site. In 2009 ConocoPhillips hired HOK as the architecture and design team to help lead the redevelopment effort. Company news releases indicate the learning center will be a, "best-in-class training facility...for all [ConocoPhillips] employees worldwide." The technology center is expected to support many new and alternative energy research and development opportunities; work closely with nearby universities, including CU, CSU, the Colorado School of Mines, and Denver University; and take advantage of ongoing collaboration with the National Renewable Energy Laboratory (NREL).

Downtown Louisville is also designated as the site for a Regional Transportation District (RTD) FasTracks commuter rail station on the Northwest Rail line. The NW Rail will extend from downtown Denver through Louisville to Boulder and Longmont and is currently scheduled to be completed in 2017.

MAJOR INITIATIVES IN 2008

The City of Louisville Home Rule Charter suggests that the City's mission is to provide basic municipal services in an efficient and cost-effective manner and maintain the qualities that make Louisville unique by protecting and enhancing the City's natural, cultural, and recreational resources, and preserving the City's scenic, historic, and aesthetic features through open and ethical government in which every member of the community has an opportunity to participate.

Consistent with this mission, City leaders and staff accomplished the following during 2008:

- Development of a Long-Term Financial Model for the City.
- Maintained and improved various highways, streets, drainage ways, sidewalks, alleys, trails, and parks and invested nearly \$3.2 million towards the City's infrastructure and the acquisition of land.
- Completed design, engineering and land acquisition required to reconstruct Dillon Road from 88th to 104th street. Total costs will be slightly over \$4 million.
- Updated the City's Comprehensive Land Use Plan
- Developed a new approach to trash collection, recycling and composting that will lower costs for the majority of residents, reduce the number of heavy trucks on streets to lessen street damage, truck traffic, noise and pollution, dramatically increase recycling rates and provide better customer service.
- Adopted and implemented a public involvement policy.

PROJECTS PLANNED IN 2009

The City reviews and publishes its Five-Year Capital Improvements Plan on an annual basis. Planned City projects include:

- Complete reconstruction of Dillon Road from 96th to 104th street.
- Begin the reconstruction of the South Boulder Road/Highway 42 intersection.
- Complete over \$1 million in general street improvements, including asphalt and concrete replacement.
- Replace the City's entire financial management and accounting system.
- Complete over \$1,000,000 in Recreation Center and parks improvements.
- Begin implementation of radio-read water meters.
- Complete over \$2.3 million in water and wastewater utility projects.
- Implement a Geographical Information System

FINANCIAL INFORMATION

Management of the City is responsible for establishing and maintaining internal controls that are designed to ensure that the assets of the City are protected from loss, theft or misuse. Also, management ensures that financial statements are prepared in conformity with generally accepted accounting principles through the compilation of adequate accounting data. Internal controls are designed to provide reasonable, but not absolute, assurance that these objectives are met. The concept of reasonable assurance recognizes that: (1) the cost of a control

should not exceed the benefits likely to be derived; and (2) the valuation of costs and benefits requires estimates and judgments by management.

Budgetary Controls. The City maintains budgetary controls. The objective of these budgetary controls is to ensure compliance with legal provisions embodied in the annual appropriated budget approved by the City Council. The level of budgetary control (that is, the level at which expenditures cannot legally exceed the appropriated amount) is established at the fund level. The City also maintains an encumbrance accounting system as one technique of accomplishing budgetary control. Encumbered amounts lapse at year-end; however, encumbrances are generally re-appropriated the following year.

As demonstrated by the statements and schedules included in the financial section of the report, the City continues to meet its responsibility for sound financial management.

Cash Management. Cash temporarily idle during the year was invested in demand deposits, certificates of deposit, obligations of the U.S. Treasury, and other obligations of the United States government or its agencies. The maturities of the investments range from a few months to 5 years. The average yield on investments, excluding unrealized gains, was 3.6%. The City earned interest revenue of \$1.3 million on all investments for the year ended December 31, 2008.

The City's investment policy is to minimize credit and market risks while maintaining a competitive yield on its portfolio. Accordingly, deposits were either insured by federal depository insurance or collateralized. All collateral on deposits was held either by the City, its agent or a financial institution's trust department in the City's name. All investments held by the City during the year, and at December 31, 2008, are classified in the category of lowest credit risk as defined by the Governmental Accounting Standards Board.

Risk Management. The primary objective of the City's risk management program is to protect against loss or losses, which would significantly affect personnel, property, the budget or the ability of the City to fulfill its responsibility to the taxpayer and the public. Potentially hazardous risk exposures are evaluated on an ongoing basis and, where feasible and cost effective, reduced or eliminated.

The City retains risk for its general liability up to the limit of governmental immunity. Colorado Law grants governmental immunity to all governments, which limits the loss on any one claim to \$150,000 per person, and \$600,000 per occurrence. The City also carries excess coverage for those claims that would not fall under the governmental immunity. The insurance coverage for Workers' Compensation is through Pinnacle Assurance.

OTHER INFORMATION

Independent Audit. State statutes require an annual audit by independent certified public accountants. The accounting firm of Eide Bailly, LLP was retained by City Council for this purpose. The auditors' report on the basic financial statements and other schedules is included in the financial section of this report.

Awards. The Government Finance Officers Association of the United States and Canada (GFOA) awarded a Certificate of Achievement for Excellence in Financial Reporting to the City of Louisville for its Comprehensive Annual Financial Report for the fiscal year ended December 31, 2007. The City of Louisville has received a Certificate of Achievement for the last eighteen consecutive years. In order to be awarded a Certificate of Achievement, a government must publish an easily readable and efficiently organized Comprehensive Annual Financial Report. This report must satisfy both generally accepted accounting principles and applicable legal requirements.

A Certificate of Achievement is valid for a period of one year only. We believe that our current Comprehensive Annual Financial Report continues to meet the Certificate of Achievement Program's requirements and we are submitting it to the GFOA to determine its eligibility for another certificate.

In addition, the City of Louisville also received the GFOA's Award for Distinguished Budget Presentation for the 2008 fiscal year. This was the nineteenth consecutive year the City of Louisville has received this award. In order to qualify for the Distinguished Budget Presentation Award, the City's budget document was judged to be proficient as a policy document, financial plan, operations guide, and communications device.

Acknowledgments. The preparation of this report would not have been possible without the efficient and dedicated efforts of the entire City staff. I especially thank all members of the City's Finance Department for their dedicated efforts and the staff of Eide Bailly, LLP for the professional manner in which they have accomplished our audit and their assistance in the publication of the City's Comprehensive Annual Financial Report. We thank the Mayor and City Council for their effective fiscal and policy direction and their support in planning and conducting the financial operations of the City in a responsible and progressive manner.

Respectfully Submitted,

Malcolm Fleming

Malcolm Fleming
City Manager

Kevin C. Watson

Kevin C. Watson
Director of Finance

Certificate of Achievement for Excellence in Financial Reporting

Presented to

City of Louisville
Colorado

For its Comprehensive Annual
Financial Report
for the Fiscal Year Ended
December 31, 2007

A Certificate of Achievement for Excellence in Financial Reporting is presented by the Government Finance Officers Association of the United States and Canada to government units and public employee retirement systems whose comprehensive annual financial reports (CAFRs) achieve the highest standards in government accounting and financial reporting.



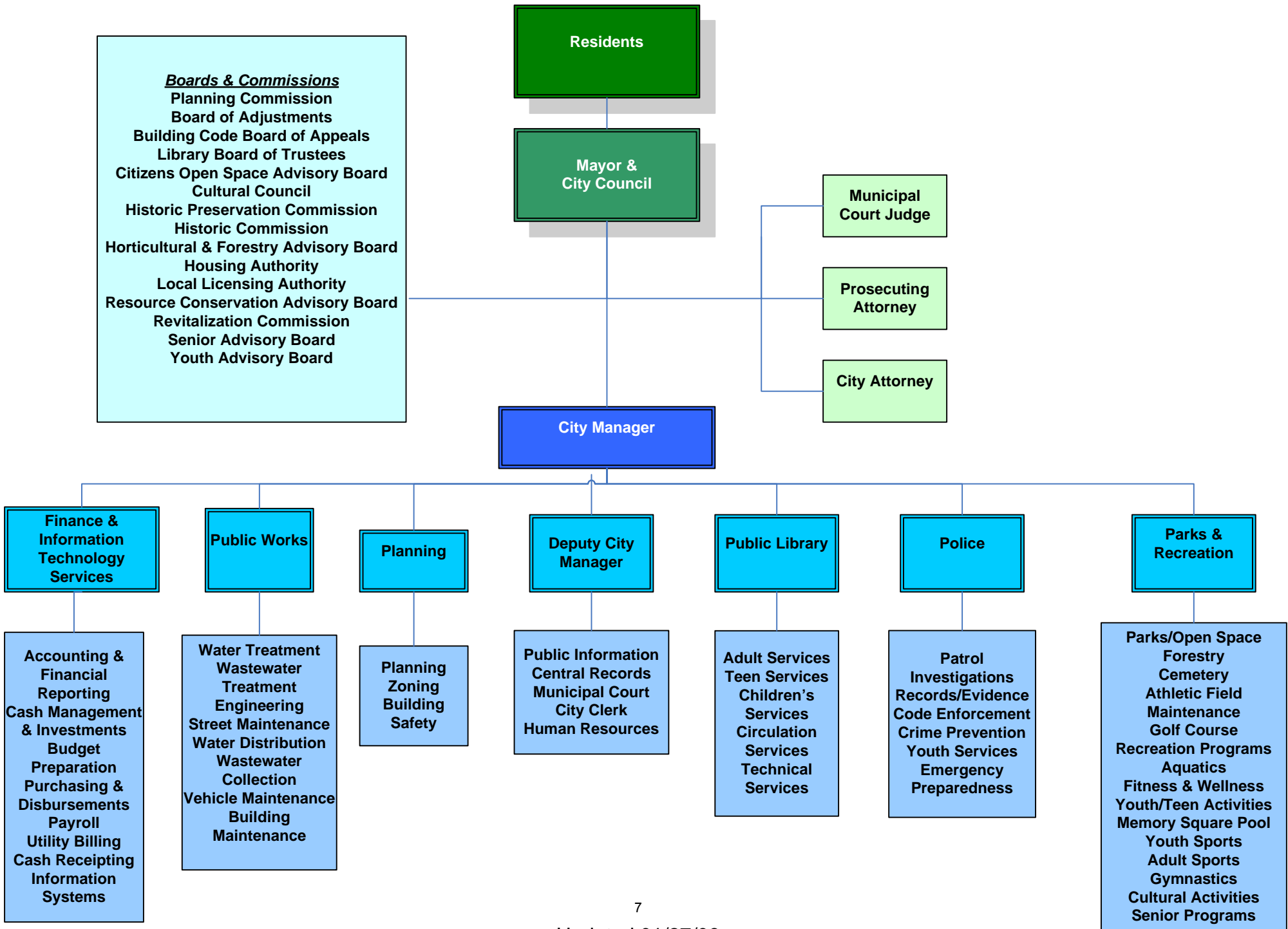
A handwritten signature in black ink, appearing to read "M. L. R. R.", written in a cursive style.

President

A handwritten signature in black ink, reading "Jeffrey R. Emer", written in a cursive style.

Executive Director

City of Louisville Organizational Chart



**City of Louisville, Colorado
Directory of City Officials
December 31, 2008**

OFFICIALS

Mayor

Charles L. Sisk

City Council

Ward I..... Robert Muckle, Dave Clabots
Ward II..... Frost Yarnell, Sheri Marsella
Ward III..... Hank Dalton, Ronald Sackett

Appointed Officials

City Manager..... Malcolm Fleming
Deputy City Manager..... Heather Balsler
City Attorney..... Samuel Light
City Clerk..... Nancy Varra
Municipal Judge Bruce Joss
Prosecuting Attorney Martin Staab

Department Directors

Director of Finance..... Kevin Watson
Director of Parks and Recreation Joe Stevens
Interim Director of Library Services Aimee Schumm
Director of Planning..... Paul Wood
Director of Public Works..... Thomas Phare
Chief of Police Bruce Goodman



CPAs & BUSINESS ADVISORS

INDEPENDENT AUDITOR'S REPORT

To the Mayor and Members of City Council
City of Louisville
Louisville, CO

We have audited the accompanying financial statements of the governmental activities, the business-type activities, each major fund, and the aggregate remaining fund information of City of Louisville, Colorado, as of and for the year ended December 31, 2008, which collectively comprise the City's basic financial statements as listed in the table of contents. These financial statements are the responsibility of City of Louisville, Colorado's management. Our responsibility is to express opinions on these financial statements based on our audit.

We conducted our audit in accordance with auditing standards generally accepted in the United States of America. Those standards require that we plan and perform the audit to obtain reasonable assurance about whether the financial statements are free of material misstatement. An audit includes consideration of internal control over financial reporting as a basis for designing audit procedures that are appropriate in the circumstances, but not for the purpose of expressing an opinion on the effectiveness of the City's internal control over financial reporting. Accordingly, we express no such opinion. An audit also includes examining, on a test basis, evidence supporting the amounts and disclosures in the financial statements, assessing the accounting principles used and significant estimates made by management, as well as evaluating the overall financial statement presentation. We believe that our audit provides a reasonable basis for our opinions.

In our opinion, the financial statements referred to above present fairly, in all material respects, the respective financial position of the governmental activities, the business-type activities, each major fund, and the aggregate remaining fund information of the City of Louisville, Colorado, as of December 31, 2008, and the respective changes in financial position and, where applicable, cash flows thereof for the year then ended in conformity with accounting principles generally accepted in the United States of America.

The management's discussion and analysis and budgetary comparison information on pages 11 through 20 and 68 through 70, are not a required part of the basic financial statements but are supplementary information required by accounting principles generally accepted in the United States of America. We have applied certain limited procedures, which consisted principally of inquiries of management regarding the methods of measurement and presentation of the required supplementary information. However, we did not audit the information and express no opinion on it.

PEOPLE. PRINCIPLES. POSSIBILITIES.

www.eidebailly.com

Our audit was conducted for the purpose of forming opinions on the financial statements that collectively comprise the City of Louisville, Colorado's basic financial statements. The introductory section, the combining and individual fund financial schedules, the local highway finance report, and the statistical section are presented for purposes of additional analysis and are not a required part of the basic financial statements. The budgetary schedules, combining and individual fund financial schedules and local highway finance report have been subjected to the auditing procedures applied in the audit of the basic financial statements and, in our opinion, are fairly stated in all material respects in relation to the basic financial statements taken as a whole. The introductory and statistical sections have not been subjected to the auditing procedures applied in the audit of the basic financial statements and, accordingly, we express no opinion on them.

Eide Bailey LLP

Golden, Colorado
June 19, 2009

Management's Discussion and Analysis

This section of City of Louisville, Colorado's annual financial report presents the discussion and analysis of the City's financial performance during the fiscal year that ended on December 31, 2008. Readers are encouraged to consider the information presented here in conjunction with the transmittal letter at the front of this report and the financial statements, which follow this section.

Financial Highlights

- The assets of the City exceeded its liabilities at the close of the most recent fiscal year by \$175.9 million (net assets). Of this amount, \$25.9 million (unrestricted net assets) may be used to meet the government's ongoing obligations to citizens and creditors.
- The City's total net assets increased by \$4.8 million, or 2.9%.
- During the year, the City's revenue from taxes and other revenues for governmental programs exceeded the expenses by \$2.1 million. This is a decrease of \$3.8 million from the prior year.
- In the City's business-type activities, net assets increased by \$2.7 million.
- The City's total long-term debt, including compensated absences payable, has decreased by \$2.0 million.
- At the close of the current fiscal year, the City's governmental funds reported combined ending fund balances of \$20.3 million. Of this amount, \$10.2 million, or 51%, is available for spending at the government's discretion (unreserved, undesignated fund balance).

Overview of the Financial Statements

This annual report consists of four parts – *management's discussion and analysis* (this section), the *basic financial statements*, *required supplementary information*, and a section that presents *combining statements* for non-major governmental funds and internal service funds. Budgetary comparison statements are also presented.

The basic financial statements include two kinds of statements that present different views of the City:

- The first two statements are *government-wide financial statements* that provide both *long-term* and *short-term* information about the City's *overall* financial status.
- The remaining statements are *fund financial statements* that focus on *individual parts* of the City government, reporting the City's operations in *more detail* than the government-wide statements.
 - The governmental fund statements tell how general government services were financed in the short term as well as what remains for future spending.
 - Proprietary fund statements offer short- and long-term financial information about the activities the government operates like businesses, such as utilities.

The basic financial statements also include *Notes to the Financial Statements* that explain some of the information in the financial statements and provide more detailed data. The basic financial statements are followed by a section of *required supplementary information* that further explains and supports the information in the financial statements. Figure 1 shows how the required parts of this annual report are arranged and related to one another.

Figure 2 summarizes the major features of the City's financial statements, including the portion of the City government they cover and the types of information they contain. The remainder of this overview section of management's discussion and analysis explains the structure and contents of each of the statements.

Figure 1

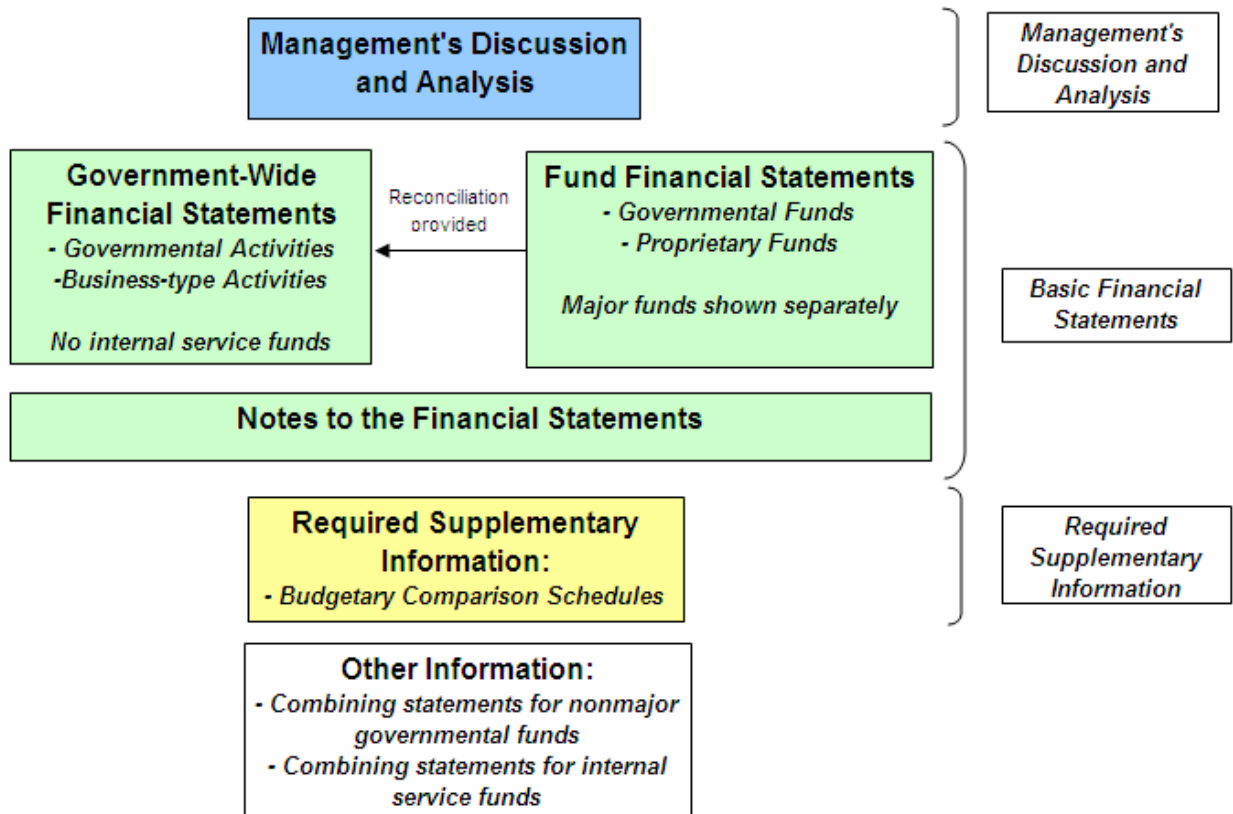


Figure 2

	-----Fund Statements-----		
	Government-wide Statements	Governmental Funds	Proprietary Funds
Scope	Entire City government	The activities of the City that are not proprietary, such as police, public works, and parks and recreation	Activities the City operates similar to private businesses: The water and sewer system and the golf course
Required financial statements	<ul style="list-style-type: none"> ▪ Statement of net assets ▪ Statement of activities 	<ul style="list-style-type: none"> ▪ Balance sheet ▪ Statement of revenues, expenditures, and changes in fund balances 	<ul style="list-style-type: none"> ▪ Statement of net assets ▪ Statement of revenues, expenses, and changes in net assets ▪ Statement of cash flows
Accounting basis and measurement focus	Accrual accounting and economic resources focus	Modified accrual accounting and current financial resources focus	Accrual accounting and economic resources focus
Type of asset/liability information	All assets and liabilities, both financial and capital, and short-term and long-term	Only assets expected to be used up and liabilities that come due during the year or soon thereafter; no capital assets included	All assets and liabilities, both financial and capital, and short-term and long-term
Type of inflow/outflow information	All revenues and expenses during year, regardless of when cash is received or paid	Revenues for which cash is received during or soon after the end of the year; expenditures when goods or services have been received and payment is due during the year or soon thereafter	All revenues and expenses during year, regardless of when cash is received or paid

Government-wide Statements

The government-wide statements report information about the City as a whole using accounting methods similar to those used by private-sector companies. The statement of net assets includes *all* of the City's assets and liabilities, with the difference between the two reported as *net assets*. Over time, increases or decreases in the City's net assets are an indicator of whether its financial health is improving or deteriorating, respectively. To assess the overall health of the City, additional nonfinancial factors need to be considered, such as changes in the City's tax base and the condition of the City's infrastructure.

The government-wide financial statements of the City are divided into two categories:

Governmental activities – Most of the City's basic services are included here, such as the public safety, public works, parks and recreation, library services, and general administration. Sales and use taxes, property taxes, and charges for services finance most of these activities.

Business-type activities – The City charges user fees to customers to recover most of the costs of providing certain services. The City's water, wastewater, and storm water utilities as well as golf facilities are included here.

Fund Financial Statements

The fund financial statements provide more detailed information about the City's most significant *funds* – not the City as a whole. A fund is a grouping of related accounts that is used to maintain control over resources that have been segregated for specific activities or objectives. The City uses fund accounting to ensure and demonstrate compliance with finance-related legal requirements. Some funds are required by State law and by bond covenants. Other fund are established by the City Council to control and manage money for particular purposes or to show that it is properly using certain taxes and grants.

All of the funds currently used by the City can be divided into two categories: governmental funds and proprietary funds.:

- *Governmental funds* – Most of the City's basic services are included in governmental funds, which focus on (1) how *cash and other financial assets* can readily be converted to cash flow in and out and (2) the balances left at year-end that are available for spending. Consequently, the governmental funds statements provide a detailed *short-term* view that helps determine whether there are more or fewer financial resources that can be spent in the near future to finance the City's programs. Because this information does not encompass the additional long-term focus of the government-wide statements, additional information at the bottom of the governmental funds statement is provided, or on the subsequent page, that explains the relationship (or differences) between them.
- *Proprietary funds* – Services for which the City charges customers a fee are generally reported in proprietary funds. Proprietary funds, like the government-wide statements, provide both long- and short-term financial information.
 - The City's *enterprise funds* (one type of proprietary fund) are the same as its business-type activities, but provide more detail and additional information, such as cash flows.
 - *Internal service funds* (the other kind of proprietary fund) are used to report activities that provide services and asset replacement for the City's other programs and activities – such as the City's Fleet Management Fund. These funds are reported with governmental activities in the government-wide financial statements.

Government-Wide Financial Analysis

Net Assets As of December 31, 2008, the City's assets exceeded its liabilities by \$175.9 million (Figure 3). This amounts to an increase in combined net assets of \$4.9 million, or 2.9%, from 2007 to 2008.

The largest portion of the City's net assets (79%) reflects its investment in capital assets (e.g., land, buildings, machinery, and equipment), less any related debt used to acquire those assets that is still outstanding. The City uses these capital assets to provide services to citizens; consequently, these assets are not available for future spending. Although the City's investment in its capital assets is reported net of related debt, it should be noted that the resources needed to repay this debt must be provided from other sources, since the capital assets themselves cannot be used to liquidate these liabilities.

Figure 3
Schedule of Net Assets
(millions)

	Governmental Activities		Business-type Activities		Total		Total % Of Change
	2008	2007	2008	2007	2008	2007	
Current & Other Asset	\$ 27.6	\$ 26.5	\$ 15.2	\$ 13.1	\$ 42.8	\$ 39.6	8.3%
Capital Assets	87.0	86.0	74.9	75.6	161.9	161.6	-0.2%
Total Assets	114.6	112.5	90.1	88.7	204.7	201.2	1.5%
Long-Term Debt Outstanding	7.8	8.5	13.5	14.8	21.3	23.3	-8.2%
Other Liabilities	5.6	5.0	1.9	1.9	7.5	6.9	0.0%
Total Liabilities	13.4	13.5	15.4	16.7	28.8	30.2	-6.3%
Net Assets:							
Invested in Capital Assets, Net of Related Debt	79.1	77.5	60.2	59.6	139.3	137.1	1.2%
Restricted	10.3	10.1	1.0	0.9	11.3	11.0	2.7%
Unrestricted	12.4	11.4	13.5	11.5	25.9	22.9	13.1%
Total Net Assets	\$101.2	\$ 99.0	\$ 74.7	\$ 72.0	\$175.9	\$171.0	2.9%

Charges for services are the City's largest revenue source and account for 38% of all revenues (Figure 4). Charges for services are the main funding source for the City's business-type activities. Sales and use tax, the main funding source for the City's governmental activities, account for 30% of all revenues. The total cost of all programs and services increased in almost all areas due to a general increase in operational costs. The City's largest expenses come from business activities (Figure 5).

Figure 4

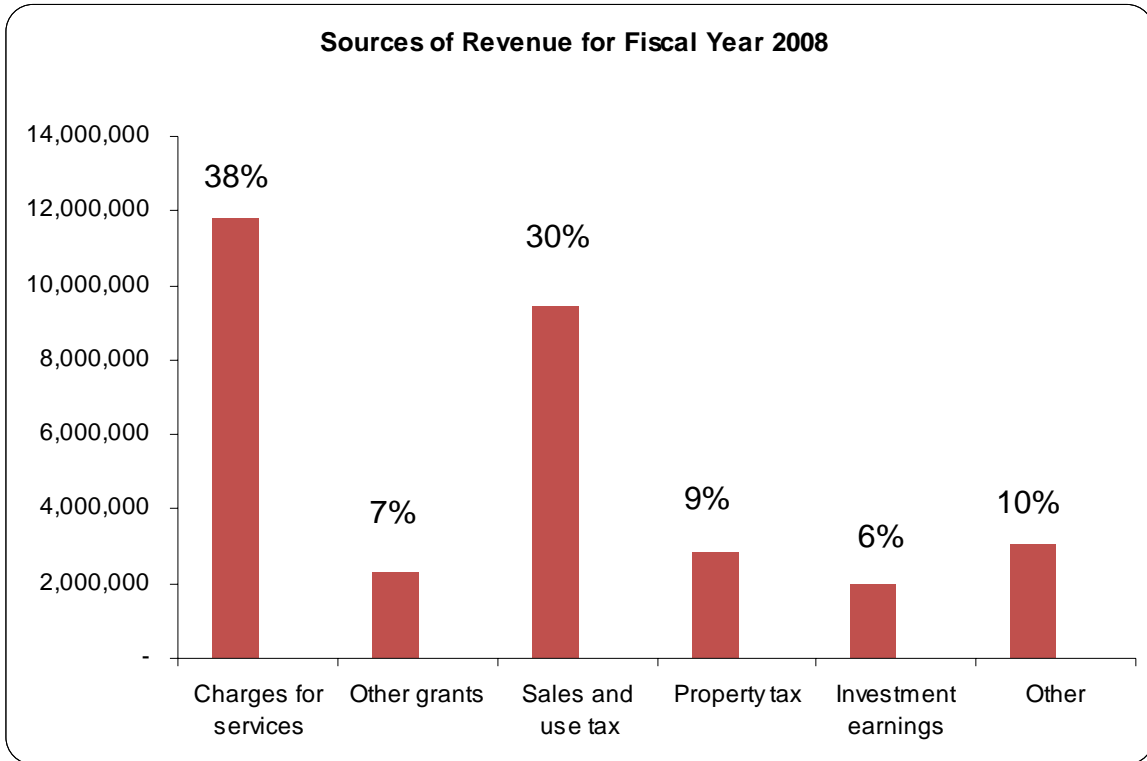
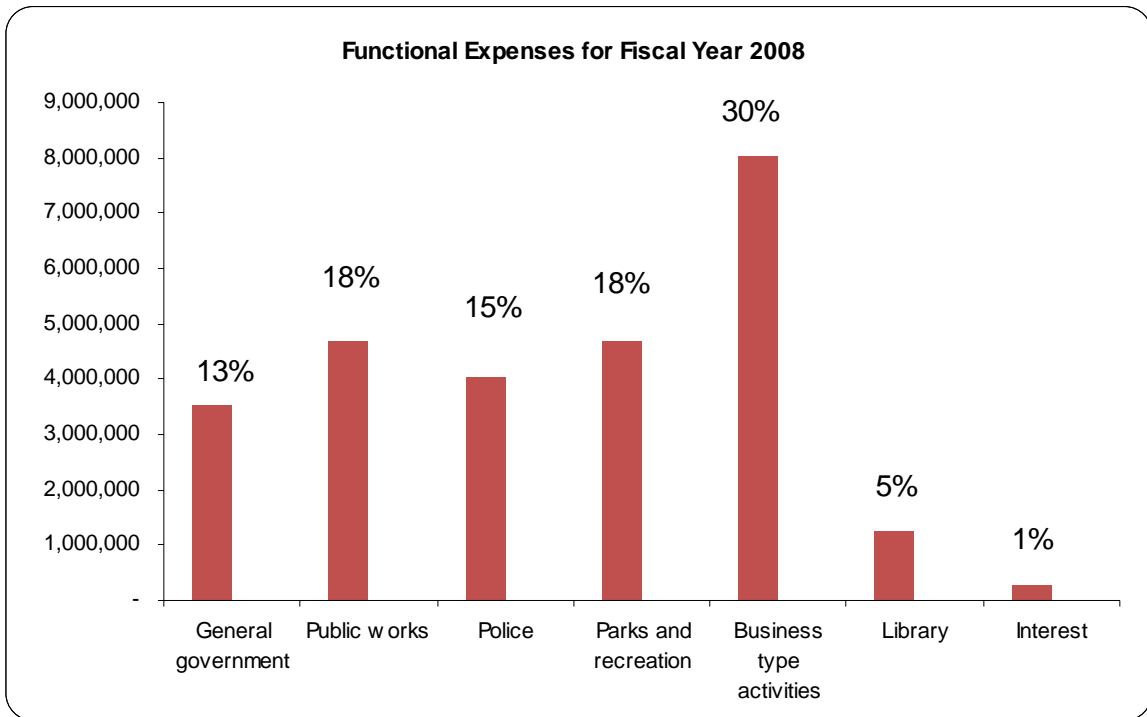


Figure 5



Changes in Net Assets Governmental activities increased the City's net assets by \$2.1 million, thereby accounting for 44% of the total growth in net assets. Business-type activities increased the City's net assets by \$2.7 million, accounting for 56% of the total growth in net assets.

Figure 6
Schedule of Changes in Net Assets
(millions)

	Governmental Activities		Business-type Activities		Total	
	2008	2007	2008	2007	2008	2007
Revenues:						
Program Revenues:						
Charges for Services	\$ 3.1	\$ 3.8	\$ 8.8	\$ 8.1	\$ 11.9	\$ 11.9
Operating Grants & Contributions	0.7	0.7	-	-	0.7	0.7
Capital Grants & Contributions	0.3	3.3	1.2	1.4	1.5	4.7
General Revenues:						
Sales & Use Taxes	10.6	10.9	-	-	10.6	10.9
Property Taxes	2.8	2.6	-	-	2.8	2.6
Investment Earnings	1.2	0.9	0.7	0.7	1.9	1.6
Other	2.0	1.8	-	-	2.0	1.8
Total Revenues	20.7	24.0	10.7	10.2	31.4	34.2
Expenses:						
General Government	2.4	3.6	-	-	2.4	3.6
Finance	0.3	0.3	-	-	0.3	0.3
Police	4.1	3.8	-	-	4.1	3.8
Public Works	4.7	4.7	-	-	4.7	4.7
Planning	0.8	0.7	-	-	0.8	0.7
Library	1.3	1.1	-	-	1.3	1.1
Parks & Recreations	4.7	3.6	-	-	4.7	3.6
Interest on Long-Term Debt	0.3	0.3	-	-	0.3	0.3
Water, Wastewater, & Stormwater	-	-	6.1	5.5	6.1	5.5
Golf	-	-	1.9	2.0	1.9	2.0
Total Expenses	18.6	18.1	8.0	7.5	26.6	25.6
Increase (decrease) in net assets	2.1	5.9	2.7	2.7	4.8	8.6

Financial Analysis of Funds

As the City completed the year, its governmental funds reported a *combined* fund balance of \$20.3 million, an increase of \$150,757 over last year. Some items to be noted, within various funds are:

- The General Fund had a decline in fund balance of \$695,102. This was due to a one-time transfer of \$1,512,500 to the Capital Projects Fund for specific property acquisition. Excluding inter-fund transfers, General Fund revenue exceeded General Fund expenditures by \$730,965

- The Conservation Trust-Land Acquisition Fund balance increased by \$519,878. Fund revenue exceeded budget by over 17% and expenditures were under budget by 13%.
- The Capital Projects Fund balance increased by \$1,093,529. Total expenditures for capital projects came in under-budget by 60% due to unfinished projects. Capital projects totaled \$3.2 million for the property acquisition, street improvements, Recreation Center improvements, and parks.

General Fund Budgetary Highlights

General Fund revenue exceeded budget by approximately \$146,451, or approximately 1%. Sales tax collections exceeded budget by \$209,859 (4%), but use tax came in below budget by \$164,020 (17%). Franchise tax exceeded budget by \$148,519 (15%). Licenses and permits came in below budget by \$100,409 due to slowdowns in residential and commercial construction. Total General Fund expenditures, including inter-fund transfers, were under budget by \$480,164 (3.5%).

Capital Asset and Debt Administration

Capital Assets At the end of 2008 the City had invested \$232.3 million (Figure 7) in a broad range of capital assets, including land, streets, and utility infrastructure. Net of accumulated depreciation, the City assets total \$162.0 million.

Figure 7
Net Change in Capital Assets
(millions)

	Governmental Activities		Business-type Activities		Total		Total % Of Change 2008-2007
	2008	2007	2008	2007	2008	2007	
Land & CIP	\$ 30.6	\$ 29.0	\$ 4.3	\$ 4.3	\$ 34.9	\$ 33.3	4.8%
Water Rights	-	-	30.4	30.4	30.4	30.4	0.0%
Buildings	19.1	19.0	1.1	1.1	20.2	20.1	0.5%
Infrastructure	73.7	71.2	62.4	61.8	136.1	133.0	2.3%
Machinery & Equipment	7.4	7.5	3.3	3.2	10.7	10.7	0.0%
Total	\$130.8	\$126.7	\$101.5	\$100.8	\$232.3	\$227.5	2.1%

Additional information on the City's capital assets can be found in Note 7 to the financial statements.

Long-term Debt No new debt was issued in 2008. Principal payments of \$1.9 million were made during the year on the City’s general obligation and special revenue debt (Figure 8).

Figure 8
Net Change in Long-Term Debt
(millions)

	Governmental Activities		Business-type Activities		Total		Total % Of Change 2008-2007
	2008	2007	2008	2007	2008	2007	
	General Obligation Bonds	\$ 6.0	\$ 6.3	\$ 1.0	\$ 1.2	\$ 7.0	
Revenue Bonds & Notes	2.0	2.4	13.4	14.4	15.4	16.8	-8.3%
Total	\$ 8.0	\$ 8.7	\$ 14.4	\$ 15.6	\$ 22.4	\$ 24.3	-7.8%

Additional information on the City’s long-term debt is provided in Note 8 to the financial statements.

Bond Ratings

Since 2000, the City’s general obligation bonds have been rated A1, upgraded from A3. The 2004 Library Limited Tax General Obligation Library Bonds were issued with an insured rating (MBIA) from Standard & Poor’s of “AAA” and an underlying rating of AA-. In 2007, Standard & Poor’s affirmed the underlying rating of AA-.

Limitations on Debt

The state limits the amount of general obligation debt the City can issue to 3 percent of the actual value of all taxable property within the City’s corporate limits. The current debt limit is \$94.2 million.

Economic Factors and Next Year’s Budgets and Rates

- After a 12% decline in 2006, sales tax revenue increased by 3.3% in 2007 and remained steady in 2008 with a 0.6% decline. Due to the national and regional recessions, sales tax revenue for 2009 is expected to decline by 5%. Sales tax revenue is projected to increase at an average annual rate of approximately 0.5% from 2010 through 2015.
- Assessed valuation and related property tax revenue increased by 7.3% in 2008 and, due to 2009 being a non-reassessment year, are projected to increase by only 0.4% in 2009. Property tax revenue is projected to increase at an average annual rate of approximately 2.2% from 2010 through 2015
- Water Utility rates, Sewer Utility rates, and Storm Water Utility rates were increased by 3%, 3%, and 22%, respectively, effective January 1, 2009. Similar annual rate increases are expected for the next five years.

- Total employee wages are projected to increase by 10.5% in 2009 due to new positions budgeted for 2009 and vacancies in 2008. Total employee wages are projected to increase at an average annual rate of approximately 3.1% from 2010 through 2015.
- Total employee benefit costs, lead by health insurance, are projected to increase by 9.5% in 2009. Total employee benefit costs are projected to increase at an average annual rate of approximately 5.6% from 2010 through 2015.

These indicators were taken into account when developing the budget for 2009. Total appropriations for 2009 are currently \$42.4 million, an increase of \$3.3 million (8.5%) over 2008.

The City's major capital projects for 2009 are the Dillon Road Project (\$3.4 million), the South Boulder Road/Highway 42 Project (\$2.7 million), general street reconstruction (\$1.0 million), and remote radio-read water meters (\$1.0 million).

Contact Information

This financial report is designed to provide the citizens, taxpayers, customers, investors, and creditors of the City of Louisville a general overview of the City's finances and to demonstrate the City's accountability for the money it receives. Questions concerning any of the information provided in this report or requests for additional information should be addressed to City of Louisville, Finance Department, 749 Main Street, Louisville, Colorado 80027, (303) 335-4500.



Basic Financial Statements

This page intentionally left blank.

City of Louisville, Colorado
Statement of Net Assets
December 31, 2008

	Primary Government			Prior Year Total
	Governmental Activities	Business-type Activities	Total	
Assets				
Cash and cash equivalents	\$ 22,940,308	\$ 13,521,952	\$ 36,462,260	\$ 34,070,502
Restricted Cash	-	1,030,617	1,030,617	916,878
Receivables (net)				
Property Taxes	2,814,500	-	2,814,500	2,805,125
Sales and Use Taxes	1,079,627	-	1,079,627	1,100,017
Interest	138,835	90,932	229,767	95,504
Intergovernmental	46,358	-	46,358	10,392
Other	252,508	420,681	673,189	339,512
Inventories	14,429	58,375	72,804	113,934
Prepaid expenses	152,810	21,876	174,686	45,541
Deferred charges	129,134	10,657	139,791	161,022
Capital assets:				
Land, improvements, and water rights	30,552,187	34,737,803	65,289,990	63,779,437
Other capital assets, net of depreciation	56,501,957	40,192,047	96,694,004	97,782,959
Total assets	<u>114,622,653</u>	<u>90,084,940</u>	<u>204,707,593</u>	<u>201,220,823</u>
Liabilities				
Accounts payable and accrued expenses	2,045,641	513,154	2,558,795	1,907,134
Deferred revenue	2,849,440	13,618	2,863,058	2,854,248
Noncurrent liabilities:				
Due within one year	751,114	1,369,564	2,120,678	2,051,719
Due in more than one year	7,791,638	13,509,860	21,301,498	23,352,789
Total liabilities	<u>13,437,833</u>	<u>15,406,196</u>	<u>28,844,029</u>	<u>30,165,890</u>
Net assets				
Invested in capital assets, net of related debt	79,066,972	60,205,842	139,272,814	137,070,116
Restricted for:				
Emergency reserves	602,901	-	602,901	714,510
Debt service and operating reserves	-	1,030,617	1,030,617	916,878
Library debt service	478,404	-	478,404	324,504
Library construction	111,976	-	111,976	143,616
Northwest Parkway improvements	414,364	-	414,364	1,364,031
Land acquisition	7,467,700	-	7,467,700	6,947,822
Permanently Restricted for:			-	
Permanent fund - perpetual care	613,857	-	613,857	624,678
Unrestricted	<u>12,428,646</u>	<u>13,442,285</u>	<u>25,870,931</u>	<u>22,948,778</u>
Total net assets	<u>\$ 101,184,820</u>	<u>\$ 74,678,744</u>	<u>\$ 175,863,564</u>	<u>\$ 171,054,933</u>

The notes to the financial statements are an integral part of this statement.

**City of Louisville, Colorado
Statement of Activities
For the Year Ended December 31, 2008**

Functions / Programs	<u>Expenses</u>	<u>Charges for Services</u>
Primary government		
Governmental activities		
General government	\$ 2,401,899	\$ 126,540
Finance	350,868	-
Police	4,055,906	137,265
Public works	4,704,093	387,877
Planning	774,730	600,428
Library	1,269,493	72,264
Parks and recreation	4,707,323	1,728,499
Interest on long-term debt	304,554	-
Total governmental activities	<u>18,568,866</u>	<u>3,052,873</u>
Business-type activities		
Water & Wastewater	6,072,983	6,836,012
Golf	1,947,782	1,921,332
Total business-type activities	<u>8,020,765</u>	<u>8,757,344</u>
Total primary government	<u>\$ 26,589,631</u>	<u>\$ 11,810,217</u>

The notes to the financial statements are an integral part of this statement.

Program Revenues		Net (Expense) Revenue and Changes in Net Assets				Prior Year Total
Operating Grants and Contributions	Capital Grants and Contributions	Primary Government		Total		
		Governmental Activities	Business-type Activities			
\$ -	\$ -	\$ (2,275,359)	\$ -	\$ (2,275,359)	\$ (3,385,510)	
-	-	(350,868)	-	(350,868)	(284,449)	
-	-	(3,918,641)	-	(3,918,641)	(3,689,782)	
587,776	157,987	(3,570,453)	-	(3,570,453)	(3,185,931)	
105,000	-	(69,302)	-	(69,302)	64,456	
-	-	(1,197,229)	-	(1,197,229)	(981,665)	
27,612	188,616	(2,762,596)	-	(2,762,596)	1,458,102	
-	-	(304,554)	-	(304,554)	(298,680)	
<u>720,388</u>	<u>346,603</u>	<u>(14,449,002)</u>	<u>-</u>	<u>(14,449,002)</u>	<u>(10,303,459)</u>	
-	1,221,728	-	1,984,757	1,984,757	2,099,565	
-	-	-	(26,450)	(26,450)	(112,926)	
-	<u>1,221,728</u>	-	<u>1,958,307</u>	<u>1,958,307</u>	<u>1,986,639</u>	
<u>\$ 720,388</u>	<u>\$ 1,568,331</u>	<u>\$ (14,449,002)</u>	<u>\$ 1,958,307</u>	<u>\$ (12,490,695)</u>	<u>\$ (8,316,820)</u>	
General revenues:						
Taxes:						
Property taxes		2,845,816	-	2,845,816	2,612,945	
Sales tax		9,417,834	-	9,417,834	9,487,467	
Use tax		1,159,510	-	1,159,510	1,392,689	
Franchise tax		1,142,519	-	1,142,519	997,982	
Other tax		541,135	-	541,135	550,097	
Intergovernmental revenue		123,434	-	123,434	131,461	
Investment earnings		1,203,708	769,384	1,973,092	1,594,808	
Miscellaneous		95,982	-	95,982	97,422	
Transfers		64,000	(64,000)	-	-	
Total general revenues and transfers		<u>16,593,938</u>	<u>705,384</u>	<u>17,299,322</u>	<u>16,864,871</u>	
Change in net assets		2,144,936	2,663,691	4,808,627	8,548,051	
Net assets - beginning		<u>99,039,884</u>	<u>72,015,053</u>	<u>171,054,937</u>	<u>162,506,882</u>	
Net assets - ending		<u>\$ 101,184,820</u>	<u>\$ 74,678,744</u>	<u>\$ 175,863,564</u>	<u>\$ 171,054,933</u>	

**City of Louisville
Balance Sheet
Governmental Funds
December 31, 2008**

	<u>General</u>	<u>Major Special Revenue Funds Conservation Trust - Land Acquisition</u>	<u>Major Capital Project Fund Capital Projects</u>
ASSETS			
Cash and cash equivalents	\$ 4,521,695	\$ 7,371,284	\$ 4,159,828
Receivables			
Property taxes	2,174,400	-	-
Sales and use taxes	664,703	118,824	296,100
Interest	27,292	49,940	23,883
Intergovernmental	46,358	-	-
Other	252,508	-	-
Inventories	14,429	-	-
Prepaid items	152,810	-	-
Advances to other funds	-	-	150,000
Total assets	<u>\$ 7,854,195</u>	<u>\$ 7,540,048</u>	<u>\$ 4,629,811</u>
LIABILITIES AND FUND BALANCES			
Accounts payable	\$ 632,401	\$ 54,351	\$ 105,055
Accrued liabilities	355,549	17,997	231,671
Deferred property taxes	2,174,400	-	-
Deferred revenue	28,150	-	6,790
Advances from other funds	-	-	-
Total liabilities	<u>3,190,500</u>	<u>72,348</u>	<u>343,516</u>
Fund Balances:			
Reserved for:			
Inventories	14,429	-	-
Prepaid items	152,810	-	-
Cemetery perpetual care	-	-	-
Land acquisition	-	7,467,700	-
Northwest parkway improvements	-	-	-
Library construction	-	-	-
Library debt service	-	-	-
Emergency reserves	602,901	-	-
Advances from other funds	-	-	150,000
Unreserved, undesignated in:			
General fund	3,893,555	-	-
Special revenue funds	-	-	-
Capital projects fund	-	-	4,136,295
Total fund balances	<u>4,663,695</u>	<u>7,467,700</u>	<u>4,286,295</u>
Total liabilities and fund balances	<u>\$ 7,854,195</u>	<u>\$ 7,540,048</u>	<u>\$ 4,629,811</u>

The notes to the financial statements are an integral part of this statement.

<u>Other Governmental Funds</u>	<u>Total Governmental Funds</u>
\$ 4,610,369	\$ 20,663,176
640,100	2,814,500
-	1,079,627
25,871	126,986
-	46,358
-	252,508
-	14,429
-	152,810
-	150,000
<u>\$ 5,276,340</u>	<u>\$ 25,300,394</u>
\$ 648,617	\$ 1,440,424
-	605,217
640,100	2,814,500
-	34,940
<u>150,000</u>	<u>150,000</u>
<u>1,438,717</u>	<u>5,045,081</u>
-	14,429
-	152,810
613,857	613,857
-	7,467,700
414,364	414,364
111,976	111,976
478,404	478,404
-	602,901
-	150,000
-	3,893,555
2,219,022	2,219,022
-	4,136,295
<u>3,837,623</u>	<u>20,255,313</u>
<u>\$ 5,276,340</u>	<u>\$ 25,300,394</u>

This page intentionally left blank.

**City of Louisville
Reconciliation of the Balance Sheet
to the Statement of Net Assets
December 31, 2008**

Balance sheet - total fund balances	20,255,313
<p>Amounts reported for governmental activities in the statement of net assets (Exhibit 1) are different because:</p>	
<p>Capital assets (net of accumulated depreciation) used in governmental activities are not financial resources and therefore are not reported in the funds. The amount is \$87,054,144 less the internal service funds of \$633,364.</p>	86,420,780
<p>Compensated absences are not recorded in government funds because they are not due and payable at year end.</p>	(555,580)
<p>Internal service funds are used by management to charge the costs of certain activities, such as fleet, computer replacement and insurance to individual funds. The assets and liabilities of certain internal service funds are included in governmental activities in the statement of net assets.</p>	2,922,346
<p>Some liabilities, including bonds payable (\$8,005,000), premium on bonds payable (\$46,834), cost of refunding debt \$64,661 and bond issuance costs of \$129,134 are not included in governmental funds. Both the premium and the cost of refunding will be amortized over the life of the bonds.</p>	<u>(7,858,039)</u>
<p>Net assets of governmental activities</p>	<u><u>\$ 101,184,820</u></u>

The notes to the financial statements are an integral part of this statement.

City of Louisville, Colorado
Statement of Revenues, Expenditures, and Changes in Fund Balances
Governmental Funds
For the Year Ending December 31, 2008

	<u>General</u>	<u>Major Special Revenue Funds Conservation Trust - Land Acquisition</u>	<u>Major Capital Project Fund Capital Projects</u>
REVENUES			
Taxes:			
Property taxes	\$ 2,186,615	\$ -	\$ -
Sales tax	5,649,859	1,037,322	2,730,653
Use tax	802,980	129,869	226,661
Lodging tax	369,019	-	-
Franchise tax	1,142,519	-	-
Other taxes	172,116	-	-
Licenses and Permits	697,091	-	-
Intergovernmental	832,963	-	147,633
Charges for services	1,512,980	-	-
Fines and forfeits	186,993	-	-
Miscellaneous			
Investment income	230,979	405,761	210,396
Other	124,337	-	18,557
Total revenues	<u>\$ 13,908,451</u>	<u>\$ 1,572,952</u>	<u>\$ 3,333,900</u>
EXPENDITURES			
Current:			
General government	\$ 1,978,203	\$ 926,856	\$ 480,958
Finance	348,696	-	-
Police	3,867,488	-	-
Public works	2,602,796	-	-
Planning	777,449	-	-
Library services	1,103,086	-	-
Parks and Recreation	2,499,768	-	-
Capital outlay	-	126,218	3,206,050
Debt service:			
Principal	-	-	375,000
Interest	-	-	75,863
Total expenditures	<u>13,177,486</u>	<u>1,053,074</u>	<u>4,137,871</u>
Excess (deficiency) of revenues over expenditures	<u>730,965</u>	<u>519,878</u>	<u>(803,971)</u>
OTHER FINANCING SOURCES (USES)			
Transfers in	86,433	-	1,897,500
Transfers (out)	<u>(1,512,500)</u>	<u>-</u>	<u>-</u>
Total other financing sources (uses)	<u>(1,426,067)</u>	<u>-</u>	<u>1,897,500</u>
Net change in fund balances	(695,102)	519,878	1,093,529
Fund balances, January 1	<u>5,358,797</u>	<u>6,947,822</u>	<u>3,192,766</u>
Fund balances, December 31	<u>\$ 4,663,695</u>	<u>\$ 7,467,700</u>	<u>\$ 4,286,295</u>

The notes to the financial statements are an integral part of this statement.

<u>Other Governmental Funds</u>	<u>Total Governmental Funds</u>
\$ 659,201	\$ 2,845,816
-	9,417,834
-	1,159,510
-	369,019
-	1,142,519
-	172,116
371,102	1,068,193
188,616	1,169,212
-	1,512,980
-	186,993
251,048	1,098,184
25,859	168,753
<u>\$ 1,495,826</u>	<u>\$ 20,311,129</u>
\$ 181,668	\$ 3,567,685
-	348,696
-	3,867,488
-	2,602,796
-	777,449
-	1,103,086
-	2,499,768
1,157,289	4,489,557
295,000	670,000
221,984	297,847
<u>1,855,941</u>	<u>20,224,372</u>
<u>(360,115)</u>	<u>86,757</u>
-	1,983,933
<u>(407,433)</u>	<u>(1,919,933)</u>
<u>(407,433)</u>	<u>64,000</u>
(767,548)	150,757
<u>4,605,171</u>	<u>20,104,556</u>
<u>\$ 3,837,623</u>	<u>\$ 20,255,313</u>

This page intentionally left blank.

City of Louisville
Reconciliation of the Statement of Revenues,
Expenditures, and Changes in Fund Balances of Governmental Funds
to the Statement of Activities
For the Year Ended December 31, 2008

Net change in fund balances - total governmental funds	150,757
<p>Amounts reported for governmental activities in the statement of net activities (Exhibit 2) are different because:</p>	
<p>Governmental funds report capital outlays as expenditures. However, in the statement of activities the cost of those assets is allocated over their estimated useful lives and reported as depreciation expense. This is the amount by which net capital outlays \$4,468,855 exceeded depreciation (\$3,266,725) in the current period.</p>	1,202,130
<p>Some expenses reported in the statement of activities do not require the use of current financial resources and therefore are not reported as expenditures in governmental funds.</p>	12,038
<p>Repayment of bond principal is an expenditure in the governmental funds, but the repayment reduces long-term liabilities in the statement of net assets. This is the amount of debt repayments.</p>	670,000
<p>Internal service funds are used by management to charge the costs of certain activities, such as fleet, computer replacement and insurance to individual funds. The aggregate net revenue of certain internal service funds is reported with governmental activities.</p>	<u>110,012</u>
Change in net assets of governmental activities	<u>\$ 2,144,936</u>

The notes to the financial statements are an integral part of this statement.

City of Louisville, Colorado
Statement of Net Assets
Proprietary Funds
December 31, 2008

	<u>Enterprise Funds</u>			<u>Internal Service Funds</u>
	<u>Water & Wastewater</u>	<u>Golf Course</u>	<u>Totals</u>	
ASSETS				
Current assets:				
Cash and cash equivalents	\$ 13,470,521	\$ 51,431	\$ 13,521,952	\$ 2,277,132
Receivables				
Interest	90,932	-	90,932	11,850
Accounts (net of allowance for doubtful accounts)	408,352	12,329	420,681	-
Inventories	-	58,375	58,375	-
Prepaid expenses	-	21,876	21,876	-
Total current assets	<u>13,969,805</u>	<u>144,011</u>	<u>14,113,816</u>	<u>2,288,982</u>
Noncurrent assets:				
Cash restricted for debt service	1,030,617	-	1,030,617	-
Deferred charges	-	10,657	10,657	-
Capital assets:				
Property, plant and equipment:				
Land / land improvements	424,566	3,870,117	4,294,683	-
Buildings	309,522	834,324	1,143,846	-
Improvements other than buildings	569,378	1,593,396	2,162,774	-
Treatment / pumping plants	20,681,197	-	20,681,197	-
Reservoirs / storage facilities	6,076,723	-	6,076,723	-
Collection system	33,517,506	-	33,517,506	-
Machinery and equipment	1,970,539	1,187,598	3,158,137	2,487,312
Office furniture and fixtures	108,639	11,111	119,750	791,865
Water rights	30,443,120	-	30,443,120	-
Less: Accumulated depreciation	<u>(24,241,787)</u>	<u>(2,426,099)</u>	<u>(26,667,886)</u>	<u>(2,645,813)</u>
Total capital assets (net of accumulated depreciation)	<u>69,859,403</u>	<u>5,070,447</u>	<u>74,929,850</u>	<u>633,364</u>
Total noncurrent assets	<u>70,890,020</u>	<u>5,081,104</u>	<u>75,971,124</u>	<u>633,364</u>
Total assets	<u>\$ 84,859,825</u>	<u>\$ 5,225,115</u>	<u>\$ 90,084,940</u>	<u>\$ 2,922,346</u>

The notes to the financial statements are an integral part of this statement.

	Enterprise Funds			Internal Service Funds
	<u>Water & Wastewater</u>	<u>Golf Course</u>	<u>Totals</u>	
LIABILITIES				
Current liabilities:				
Accounts payable	\$ 180,934	\$ 105,411	\$ 286,345	\$ -
Accrued liabilities	188,949	37,860	226,809	-
Deferred revenue	-	13,618	13,618	-
Compensated absences payable - current	17,096	-	17,096	-
General obligation bonds payable - current	-	230,000	230,000	-
Notes payable - current	1,085,000	-	1,085,000	-
Capital lease payable - current	<u>37,468</u>	<u>-</u>	<u>37,468</u>	<u>-</u>
Total current liabilities	<u>1,509,447</u>	<u>386,889</u>	<u>1,896,336</u>	<u>-</u>
Long-term liabilities:				
Compensated absences payable	138,320	-	138,320	-
General obligation bonds payable	-	717,121	717,121	-
Notes payable	12,281,570	-	12,281,570	-
Capital lease payable	<u>372,849</u>	<u>-</u>	<u>372,849</u>	<u>-</u>
Total long-term liabilities	<u>12,792,739</u>	<u>717,121</u>	<u>13,509,860</u>	<u>-</u>
Total liabilities	<u>14,302,186</u>	<u>1,104,010</u>	<u>15,406,196</u>	<u>-</u>
Net Assets				
Invested in capital assets, net of related debt	56,082,516	4,123,326	60,205,842	633,364
Restricted for debt service and future operations	1,030,617	-	1,030,617	-
Unrestricted	<u>13,444,506</u>	<u>(2,221)</u>	<u>13,442,285</u>	<u>2,288,982</u>
Total net assets	<u>\$ 70,557,639</u>	<u>\$ 4,121,105</u>	<u>\$ 74,678,744</u>	<u>\$ 2,922,346</u>

City of Louisville, Colorado
Statement of Revenues, Expenses, and Changes in Fund Net Assets
Proprietary Funds
For the Year Ended December 31, 2008

	<u>Enterprise Funds</u>			<u>Internal Service Funds</u>
	<u>Water & Wastewater</u>	<u>Golf Course</u>	<u>Total</u>	
Operating revenues				
Charges for services				
Water and wastewater sales	\$ 6,836,012	\$ -	\$ 6,836,012	\$ -
Other services	-	1,921,332	1,921,332	452,992
Total operating revenues	<u>6,836,012</u>	<u>1,921,332</u>	<u>8,757,344</u>	<u>452,992</u>
Operating expenses				
Cost of sales and services	3,283,091	1,777,012	5,060,103	99,796
Administration	842,882	1,572	844,454	-
Depreciation and amortization	<u>1,369,339</u>	<u>131,076</u>	<u>1,500,415</u>	<u>348,707</u>
Total operating expenses	<u>5,495,312</u>	<u>1,909,660</u>	<u>7,404,972</u>	<u>448,503</u>
			-	
Operating income (loss)	<u>1,340,700</u>	<u>11,672</u>	<u>1,352,372</u>	<u>4,489</u>
Nonoperating revenues (expenses)				
Investment income	769,384	-	769,384	105,523
Interest expense	<u>(577,671)</u>	<u>(38,122)</u>	<u>(615,793)</u>	<u>-</u>
Total nonoperating revenues (expenses)	<u>191,713</u>	<u>(38,122)</u>	<u>153,591</u>	<u>105,523</u>
Income before transfers, capital contributions	1,532,413	(26,450)	1,505,963	110,012
Capital contributions - tap fees and other	1,221,728	-	1,221,728	-
Transfers in (out)	<u>(764,000)</u>	<u>700,000</u>	<u>(64,000)</u>	<u>-</u>
Change in net assets	1,990,141	673,550	2,663,691	110,012
Net assets, January 1	<u>68,567,498</u>	<u>3,447,555</u>	<u>72,015,053</u>	<u>2,812,334</u>
Net assets, December 31	<u>\$ 70,557,639</u>	<u>\$ 4,121,105</u>	<u>\$ 74,678,744</u>	<u>\$ 2,922,346</u>

The notes to the financial statements are an integral part of this statement.

City of Louisville, Colorado
Statement of Cash Flows
Proprietary Funds
For the Year Ended December 31, 2008

	<u>Water & Wastewater</u>	<u>Golf Course</u>	<u>Total</u>	<u>Internal Service Funds</u>
Cash flows from operating activities				
Receipts from customers	\$ 6,609,601	\$ 1,864,660	\$ 8,474,261	460,516
Payments to suppliers	(2,054,804)	(1,706,090)	(3,760,894)	(143,839)
Payments to employees	<u>(2,105,077)</u>	<u>-</u>	<u>(2,105,077)</u>	<u>-</u>
Net cash provided by operating activities	<u>2,449,720</u>	<u>158,570</u>	<u>2,608,290</u>	<u>316,677</u>
Cash flows from noncapital financing activities				
Internal activity - payments to other funds	(764,000)	-	(764,000)	-
Internal activity - payments from other funds	<u>-</u>	<u>700,000</u>	<u>700,000</u>	<u>-</u>
Net cash used by capital and related financing activities	<u>(764,000)</u>	<u>700,000</u>	<u>(64,000)</u>	<u>-</u>
Cash flows from capital and related financing activities				
Capital contributions	1,221,728	-	1,221,728	-
Purchases of capital assets	(277,952)	(549,017)	(826,969)	(226,705)
Principal paid on capital debt	(1,071,083)	(220,000)	(1,291,083)	-
Interest paid on capital debt	<u>(577,671)</u>	<u>(38,122)</u>	<u>(615,793)</u>	<u>-</u>
Net cash used by capital and related financing activities	<u>(704,978)</u>	<u>(807,139)</u>	<u>(1,512,117)</u>	<u>(226,705)</u>
Cash flows from investing activities				
Interest received	<u>769,384</u>	<u>-</u>	<u>769,384</u>	<u>105,523</u>
Net increase (decrease) in cash and cash equivalents	1,750,126	51,431	1,801,557	195,495
Cash and cash equivalents, January 1	<u>12,751,012</u>	<u>-</u>	<u>12,751,012</u>	<u>2,081,636</u>
Cash and cash equivalents, December 31	<u>\$ 14,501,138</u>	<u>\$ 51,431</u>	<u>\$ 14,552,569</u>	<u>\$ 2,277,131</u>
Reconciliation of operating income (loss) to net cash provided by operating activities:				
Operating income (loss)	\$ 1,340,700	\$ 11,672	\$ 1,352,372	\$ 4,489
Adjustments to reconcile operating income to net cash provided by operating activities:				
Depreciation and amortization expense	1,369,339	131,076	1,500,415	348,707
Change in assets and liabilities:				
Receivables	(226,411)	(56,672)	(283,084)	7,524
Inventories	-	26,621	26,621	-
Prepaid expenses	-	21,754	21,754	-
Compensated absences	(2,894)	-	(2,894)	-
Accounts payable	(53,743)	19,471	(34,273)	(44,043)
Accrued liabilities	<u>22,730</u>	<u>4,648</u>	<u>27,378</u>	<u>-</u>
Net cash provided by operating activities	<u>\$ 2,449,720</u>	<u>\$ 158,570</u>	<u>\$ 2,608,290</u>	<u>\$ 316,677</u>

The notes to the financial statements are an integral part of this statement.

This page intentionally left blank.



Notes to the Financial Statements

This page intentionally left blank.

Table of Contents for Notes

	Page Number
NOTE 1:	
Summary of significant accounting policies	43
A. Reporting entity	43
B. Government-wide and fund financial statements	43
C. Measurement focus, basis of accounting, and financial statement presentation.....	44
D. Assets, liabilities, and net assets or equity	46
1. Cash, cash equivalents and investments	46
2. Short-term inter-fund receivables/payables	46
3. Inventories	47
4. Prepaid items.....	47
5. Restricted assets	47
6. Capital assets	47
7. Compensated absences	48
8. Long-term obligations	48
9. Deferred Revenues	49
10. Net Assets/Fund Balance	49
11. Contraband forfeitures.....	49
12. Estimates	49
13. Comparative Data.....	49
 NOTE 2:	
Stewardship, compliance, and accountability	50
A. Budgetary information	50
B. Excess of expenditures over appropriations	50
C. Deficit fund equity	50
 NOTE 3:	
Deposits and investments.....	51
A. Cash and deposits.....	51
B. Investments	51
 NOTE 4:	
Receivables	53
A. Property taxes	53
B. Allowance for doubtful accounts.....	53
 NOTE 5:	
Interfund receivables/payables	54
 NOTE 6:	
Restricted assets	54
 NOTE 7:	
Capital assets	55
A. Governmental activities	55
B. Business-type activities	56

NOTE 8:	
Long-term debt.....	57
A. Changes in long-term liabilities	57
B. Bonds payable – government activities.....	58
C. Bonds payable – business-type activities.....	58
D. Notes payable – enterprise funds.....	58
E. Capital lease payable – enterprise funds	58
F. Debt requirements to maturity	59
NOTE 9:	
Retirement commitments – employee pension plan	60
NOTE 10:	
Risk management.....	60
NOTE 11	
Commitments	61
NOTE 12	
Contingent liabilities	63
NOTE 13	
Tax, spending, and debt limitations	63

City of Louisville
Notes to the Financial Statements
December 31, 2008

Note 1: Summary of significant accounting policies

The City of Louisville (City) was incorporated in 1882. The registered electors voted to become a home rule city on November 6, 2001 under the provisions of Article XX of the Constitution of the State of Colorado. The City is a municipal corporation governed by an elected mayor and six-member council. The financial statements of the City have been prepared in conformity with generally accepted accounting principles (GAAP) as applied to governmental units. The Governmental Accounting Standards Board (GASB) is the accepted standard-setting body for establishing governmental accounting and financial reporting principles. The more significant of the City's accounting policies are described below.

A. Reporting entity

The City applies the criteria set forth in *GASB Statement No.14, The Financial Reporting Entity*, to determine which governmental organizations should be included in the reporting entity. The inclusion or exclusion of component units is based on the elected officials' accountability to their constituents. The financial reporting entity follows the same accountability. In addition, the financial statements of the reporting entity should allow the user to distinguish between the primary government (including its blended component units, which are, in substance, part of the primary government) and discretely presented component units. Criteria for inclusion of an entity into the primary governmental unit (in blended or discrete presentation) includes, but is not limited to, legal standing, fiscal dependency, imposition of will, and the primary recipient-of services. The City presently has one blended component unit included within the reporting entity. The Urban Revitalization District is presented as a special revenue fund.

B. Government-wide and fund financial statements

The government-wide financial statements (i.e., the statement of net assets and the statement of activities) report information on all of the activities of the primary government. For the most part, the effect of interfund activity has been removed from these statements. Exceptions to this general rule are charges for interfund services that are reasonably equivalent to the services provided. *Governmental activities*, which normally are supported by taxes and intergovernmental revenues, are reported separately from *business-type activities*, which rely to a significant extent on fees and charges for support.

The statement of activities demonstrates the degree to which the direct expenses of a given function or segment is offset by program revenues. *Direct expenses* are those that are clearly identifiable with a specific function or segment. *Program revenues* include 1) charges to customers or applicants who purchase, use, or directly benefit from goods, services or privileges provided by a given function or segment and 2) grants and contributions that are restricted to meeting the operational or capital requirements of a particular function or segment. Taxes and other items not properly included among program revenues are reported instead as *general revenues*.

Separate financial statements are provided for governmental funds and proprietary funds. Major individual governmental funds and major individual enterprise funds

City of Louisville
Notes to the Financial Statements
December 31, 2008

are reported as separate columns in the fund financial statements.

Note 1: Summary of significant accounting policies (continued)

C. Measurement focus, basis of accounting, and financial statement presentation

The government-wide financial statements are reported using the economic resources measurement focus and the accrual basis of accounting, as are the proprietary fund financial statements. Revenues are recorded when earned, and expenses are recorded when a liability is incurred, regardless of the timing of related cash flows. Property taxes are recognized as revenues in the year for which they are levied. Grants and similar items are recognized as revenue as soon as all eligibility requirements imposed by the provider have been met.

Governmental fund financial statements are reported using the *current financial resources measurement focus* and the *modified accrual basis of accounting*. Revenues are recognized as soon as they are both measurable and available. Revenues are considered to be *available* when they are collected within the current period or soon enough thereafter to pay liabilities of the current period. For this purpose, the City considers revenues to be available if they are collected within 60 days of the end of the current fiscal period. Expenditures generally are recorded when a liability is incurred, as under accrual accounting. However, debt service expenditures are recorded only when payment is due.

Property taxes, sales taxes, franchise taxes, licenses, and interest associated with the current fiscal period are all considered to be susceptible to accrual and have been recognized as revenues of the current fiscal period. All other revenue items are considered to be measurable and available only when the City receives cash.

The City reports the following major governmental funds:

The *General Fund* is the City's primary operating fund. It is used to account for most of the day-to-day operations of the City, which are financed from sales taxes, property taxes, and other general revenues. Activities financed by the General Fund include those of line and staff departments within the City, except for activities of the enterprise funds.

The *Conservation Trust – Land Acquisition Fund* is a special revenue fund and accounts for a temporary sales and use tax of three-eighths percent (3/8%) to be in effect for ten years, beginning January 1, 1994. The voters extended this tax in 2003 for another ten years beginning January 1, 2004 and ending on December 31, 2013. Revenues from the three-eighths percent are used exclusively for the acquisition and maintenance of land in and around Louisville for open space buffer zones, trails, wildlife habitats, wetlands preservation and future parks.

City of Louisville
Notes to the Financial Statements
December 31, 2008

Note 1: Summary of significant accounting policies (continued)

C. Measurement focus, basis of accounting, and financial statement presentation (continued)

The *Capital Projects Fund* was created in 1985 to account for the service expansion fee and the major thoroughfare fee. These fees are collected through the building permit process and are restricted for construction or renovation of park and building facilities; improvements to streets, alleys, sidewalks, and trails; acquisition to City trees, improvements to drainage system; and for capital equipment. This fund also accounts for the monies received from a one-percent (1%) sales tax, which began July 1, 1989. This one-percent sales tax funds various capital improvements and the debt service on sales tax revenue bonds issued in 2003.

Proprietary funds distinguish *operating* revenues and expenses from *non-operating* items. Operating revenues and expenses generally result from providing services and producing and delivering goods in connection with a proprietary fund's principal ongoing operations. The principal operating revenues of the water and sewer utilities, the golf course enterprise funds, and of the City's internal service funds are charges to customers for sales and services. The water and sewer utilities recognize the portion of tap fees intended to recover the cost of connecting new customers to the system as operating revenue. Operating expenses for enterprise funds and internal service funds include the cost of sales and services, administrative expenses, and depreciation on capital assets. All revenues and expenses not meeting this definition are reported as non-operating revenues and expenses.

The City reports the following major proprietary funds:

The *Water & Wastewater Fund* accounts for the operations and capital needs to service 7,200 customers within the boundaries of the City, treat over 1.2 million gallons of water daily, provide sewer collection and treatment for 7,600 sewer accounts within the boundaries of the City, and provide storm water drainage services.

The *Golf Course Fund* accounts for the operations of Coal Creek Golf Course, which is owned by the City.

Additionally, the City reports the following fund types:

Internal Service Funds account for fleet and technology replacements provided to all departments of the City. The building maintenance fund accounts for repairs and maintenance to City buildings. The activity of the Internal Service Funds has been eliminated from the government-wide financial statements.

City of Louisville
Notes to the Financial Statements
December 31, 2008

Note 1: Summary of significant accounting policies (continued)

C. Measurement focus, basis of accounting, and financial statement presentation (continued)

The financial statements of the City have been prepared in conformity with accounting principles generally accepted in the United States (GAAP) as applied to governments. The Governmental Accounting Standards Board (GASB) is the accepted standard-setting body for governmental accounting and financial reporting. The City also applies Financial Accounting Standards Board (FASB) statements and interpretations issued on or before November 30, 1989, to its governmental and business-type activities at the government-wide financial reporting level and to its enterprise funds at the fund reporting level, provided they do not conflict with or contradict GASB pronouncements. The City has elected not to follow subsequent private-sector guidance.

Internally dedicated resources are reported as *general revenues* rather than as program revenues. Likewise, general revenues include all taxes.

When both restricted and unrestricted resources are available for use, it is the City's policy to use restricted resources, then unrestricted resources as needed.

D. Assets, liabilities, and net assets or equity

1. Cash, cash equivalents and investments

Cash and cash equivalents include cash on hand, amounts in demand deposits, and short-term investments with a maturity date within three months of the date acquired by the City.

Investments are stated at fair value.

2. Short-term interfund receivables/payables

Transactions between funds that are representative of lending/borrowing arrangements outstanding at the end of the fiscal year are referred to as either "due to/due from other funds" (i.e., the current portion of interfund loans) or "advances to/from other funds" (i.e., the non-current portion of interfund loans). Any residual balances outstanding between the governmental activities and business-type activities are reported in the government-wide financial statements as "internal balances." Advances from other funds, as reported in the fund financial statements, are offset by a fund balance reserve account in applicable governmental funds to indicate they are not available for appropriation and are not expendable available financial resources.

City of Louisville
Notes to the Financial Statements
December 31, 2008

Note 1: Summary of significant accounting policies (continued)

D. Assets, liabilities, and net assets or equity (continued)

3. Inventories

Inventories are valued at cost, using the first-in/first-out method. The costs of inventories are recorded as an expense or expenditure when consumed rather than when purchased. The inventory balance, as reported in the fund financial statements, is offset by a fund balance reserve account in applicable governmental funds to indicate they are not available for appropriation and are not expendable available financial resources.

4. Prepaid items

Payments made to vendors for services that will benefit periods beyond year-end are recorded as prepaid items. The prepaid balances, as reported in the fund financial statements, are offset by a fund balance reserve account in applicable governmental funds to indicate they are not available for appropriation and are not expendable available financial resources.

5. Restricted assets

Restricted assets in the enterprise funds are cash set aside for the repayment of debt in compliance with bond covenants and cash restricted for future operations in compliance with escrow reserve agreements.

6. Capital assets

Capital assets, which include property, plant, equipment, and infrastructure assets (e.g., roads, sidewalks, traffic signals, trails, and similar items) purchased or constructed since 1980, are reported in the applicable governmental or business-type activities columns in the government-wide financial statements and the proprietary fund types in the fund financial statements. Capital assets are defined by the City as assets with an initial individual cost of \$5,000 or more and an estimated useful life in excess of two years. Such assets are recorded at historical cost or estimated historical cost if purchased or constructed. Donated capital assets are recorded at estimated fair market value at the date of donation.

The costs of normal maintenance and repairs that do not add to the value of the asset or materially extend asset lives are not capitalized. Improvements are capitalized and depreciated over the remaining useful lives of the related assets, as applicable.

City of Louisville
Notes to the Financial Statements
December 31, 2008

Note 1: Summary of significant accounting policies (continued)

D. Assets, liabilities, and net assets or equity (continued)

Interest is capitalized on proprietary fund assets acquired with tax-exempt debt. The amount of interest to be capitalized is calculated by offsetting interest expense incurred from the date of the borrowing until completion of the project with interest earned on invested proceeds over the same period. In 2008 no interest was capitalized.

Property, plant, and equipment of the City are depreciated using the straight line method over the following estimated useful lives:

<u>Assets</u>	<u>Years</u>
Buildings	50
Building improvements	30
Streets and sidewalks	35
Water/sewer systems	50
Vehicles	3 - 7
Machinery and equipment	5 - 10
Computer equipment	3 - 10

7. Compensated absences

Upon termination, employees are paid for all unused time in their paid leave bank and compensatory time. Accumulated paid leave and compensatory time for employees paid out of governmental funds are recorded as a fund liability when due. All unused time is recorded as a liability in the Governmental Activities column in the Statement of Net Assets. As the paid leave and compensatory time benefits accrue to employees of proprietary funds, an expense and liability is recorded in those funds.

8. Long-term obligations

In the government-wide financial statements, and proprietary fund types in the fund financial statements, long-term debt and other long-term obligations are reported as liabilities in the applicable governmental activities, business-type activities, or proprietary fund type statement of net assets.

In the fund financial statements, governmental fund types recognize bond discounts and issuance costs in the current period. Bond discounts and issuance costs for proprietary fund types are deferred and amortized on a straight-line basis over the term of the bonds using the straight-line method, which approximates the effective interest method. Bond discounts are presented as a reduction of the face amount of bonds payable, whereas issuance costs are recorded as deferred charges.

City of Louisville
Notes to the Financial Statements
December 31, 2008

Note 1: Summary of significant accounting policies (continued)

D. Assets, liabilities, and net assets or equity (continued)

9. Deferred Revenues

Deferred revenues include grant funds that have been collected, but the corresponding expenditures have not been incurred. Property taxes levied for subsequent periods are also recorded as deferred revenue.

10. Net Assets/Fund balance

In the fund financial statements, governmental funds report reservations of fund balance for amounts that are not available for appropriation or are legally restricted by outside parties for use for a specific purpose. Designations of fund balance represent tentative management plans for future use of financial resources. In the government-wide financial statements, net assets are restricted when constraints placed on the net assets are externally imposed.

11. Contraband forfeitures

In accordance with the Colorado Contraband Forfeiture Act (CRS-16-13-501 to 511) forfeitures from the seizure of contraband are used for the specific purpose of law enforcement activities. These funds have been audited and are included in the City's General Fund.

12. Estimates

The preparation of financial statements in conformity with generally accepted accounting principles requires management to make estimates that could affect certain reported amounts and disclosures. Accordingly, actual results could differ from those estimates.

13. Comparative Data

Certain comparative total data for the prior year has been presented in the accompanying financial statements in order to provide an understanding of changes in the City's financial position and operations. However, complete comparative data in accordance with generally accepted accounting principles has not been presented since its inclusion would make the financial statements unduly complex and difficult to read.

City of Louisville
Notes to the Financial Statements
December 31, 2008

Note 2: Stewardship, compliance, and accountability

A. Budgetary information

Budgets for the governmental funds are adopted on a basis consistent with generally accepted accounting principles (GAAP). Budgets for the proprietary funds are adopted on a basis consistent with GAAP except that the budgeted expenditures also include capital outlay and bond principal payments and exclude depreciation. Council legally adopts all governmental and proprietary fund budgets. The level on which expenditures may not exceed appropriations is the legally adopted annual operating budget for each fund. All annual appropriations lapse at year end. The City Council may amend the budget by resolution. The City requires all governmental and all proprietary funds adopt an annual budget.

On or before the first day of September, each department head shall submit to the City Manager the department's proposed budget for the next fiscal year. On or before the third Tuesday in October, the City Manager shall submit to the Council the proposed budget for the next fiscal year. Within fourteen days after receiving the proposed budget from the City Manager, City Council shall set the date and time for at least one public hearing on the proposed budget. On or before December 15, the City Council shall adopt the budget by resolution.

Encumbrances represent commitments related to unperformed contracts for goods and services. Encumbrance accounting – under which purchase orders, contracts and other commitments for the expenditure of resources are recorded to reserve that portion of the applicable appropriation – is utilized in all funds. Encumbrances outstanding at year-end lapse and do not constitute expenditures or liabilities because the commitments will be re-appropriated during the subsequent year.

B. Excess of expenditures over appropriations

For the year ended December 31, 2008 expenditures exceeded appropriations in the Cemetery Perpetual Care Fund and the Northwest Parkway Fund by \$1,536 and \$133,584 respectively. This may be a violation of Colorado State Statute.

C. Deficit fund equity

The Parking Improvement Fund, a special revenue fund, has a deficit fund balance of \$98,862. This has been funded through inter-fund loans. It is anticipated that the Parking Improvement Fund will be receiving fees to offset this deficit in future years.

City of Louisville
Notes to the Financial Statements
December 31, 2008

Note 3: Deposits and investments

A. Cash and deposits

As of December 31, 2008 the summary of the carrying values of deposits and investments is as follows:

Petty Cash	\$ 5,574
Deposits	1,900,553
Investments	<u>35,586,751</u>
	<u>\$ 37,492,878</u>

The Colorado Public Deposit Protection Act (“PDPA”) requires that all units of local government deposit cash in eligible public depositories. Eligibility is determined by State regulators. Amounts on deposit in excess of federal insurance levels must be collateralized. The eligible collateral is determined by the PDPA. PDPA allows the institution to create a single collateral pool for all public funds. The pool is to be maintained by another institution or held in trust for all the uninsured public deposits as a group. The market value of the collateral must be at least equal to 102% of the aggregate uninsured deposits. The City has \$2,139,781 collateralized deposits as of December 31, 2008.

B. Investments

The types of investments which are authorized to be made with City funds are controlled by state statutes and the investment policies of the City. Colorado statutes and the City’s investment policies specify investments instruments meeting defined rating risk criteria in which the City may invest:

- Any security issued by, fully guaranteed by, or for which the full credit of the United States Treasury is pledged for payment.
- Any security issued by, fully guaranteed by, or for which the full credit of the following is pledged for payment: The Federal Farm Credit Bank, A Federal Home Loan Bank, the Federal Home Loan Mortgage Corporation, and The Federal National Mortgage Association.
- Any security that is a general obligation of any state of the United States.
- Any interest in a local government investment pool.
- Any corporate bank security issued by a corporation or bank that is organized and operated within the United States.
- Any money market fund that is registered as an investment company under the federal “Investment Company Act of 1940”.
- The purchase of any repurchase agreement of securities that are marketable.

City of Louisville
Notes to the Financial Statements
December 31, 2008

Note 3: Deposits and investments (continued)

At December 31, 2008, the City's investments are categorized as follows:

Account	Ratings	Maturity			Total
		<1Year	1-5 Years	5-10 Years	
CSAFE	AAAm S&P	4,277,855	-	-	4,277,855
COLOTRUST	AAAm S&P	2,434,857	-	-	2,434,857
Agency Securities	AAA/stable S&P	2,054,999	25,649,779	-	27,704,778
MM - Federated Treas. Oblig	AAAm S&P	144,232	-	-	144,232
MM - First Southwest Safekeeping	AAAm S&P	25,029	-	-	25,029
Firstier Bank - CDARS	FDIC Insured	1,000,000	-	-	1,000,000
Total		\$ 9,936,972	\$ 25,649,779	\$ -	\$ 35,586,751

Local Government Investment Pool – At December 31, 2008, the City had \$4,277,855 and \$2,434,857 invested in the Colorado Surplus Asset Fund Trust (CSAFE) and COLOTRUST, respectively, local government investment pools. The pools operate under the Colorado Revised Statutes (24-75-701) and are overseen by the Colorado Securities Commissioner. The pools invest in securities that are specified by the Colorado Revised Statutes (24-75-601). Authorized securities include U.S. Treasuries, U.S. Agencies, commercial paper rated A1 or better and bank deposits (collateralized through PDPA). The pools operate similar to a 2a-7-like money market fund with a share value equal to \$1.00 and a maximum weighted average maturity of 60 days. The pools are rated AAAm by the Standards & Poor's Corporation. A custodial bank provides banking services and trust custody for securities held on behalf of the participating governments in the pools. The custodian's internal records identify the investments owned by the participating governments.

CDARS[®] is the Certificate of Deposit Account Registry Service that provides access to full FDIC insurance on deposits of up to \$50 million by placing funds into Certificates of Deposits issued by banks within the network in increments eligible for FDIC protection.

Interest Rate Risk – In accordance with the City's Investment Policy and State statutes, the City manages its exposure to declines in fair value losses arising from increased interest rates by limiting the maturity date of investment securities to five years from the date of purchase.

Credit Risk – The City's Investment Policy and State statutes limit investments in money market funds to those that maintain a constant share price, with a maximum remaining maturity in accordance with Rule 2a-7, and either have assets of one billion dollars or the highest rating issued by a NRSRO. State statutes limit investments in U.S. Agency securities to the highest rating issued by at least two NRSROs.

Concentration of Credit Risk – The City's Investment Policy and State statutes do not limit the amount the City may invest in one issuer. At December 31, 2008, the City's investment in Federal Home Loan Bank securities represented 37% of the City's total investments. In addition, the City's investments in Fannie Mae Notes and Freddie Mac Medium-Term Notes represented 20% and 9%, respectively, of the City's total investments.

City of Louisville
Notes to the Financial Statements
December 31, 2008

Note 4: Receivables

A. Property taxes

Property taxes are attached as an enforceable lien on property as of January 1. Taxes are certified by December 31, levied on January 1 and paid in either one installment on April 30, or two installments on February 28 and June 15. Boulder County bills and collects the City's property taxes. Property taxes are recognized as receivables and deferred revenues when a lien is placed on the property, and as revenue when due for collection in the following year.

B. Allowance for doubtful accounts

The allowance for doubtful accounts in the Water and Wastewater Fund are based on what City management believes may not be collectible. The allowance for doubtful accounts at December 31, 2008, was \$1,343.

Note 5: Inter-fund receivables/payables and transfers

The composition of inter-fund balances at December 31, 2008 is as follows:

<u>Receivable Fund</u>	<u>Payable Fund</u>	<u>Amount</u>
Capital Projects	Parking Improvement	\$150,000

The advances to/from other funds represents an inter-fund loan. The \$150,000 was a loan made from the Capital Projects to Parking Improvement Fund to cover the cost of a land acquisition purchase, and was repaid in 2009.

Inter-fund transfers occurring in 2008 are as follows:

Transfer In:				
Transfer Out:	<u>General</u>	<u>Capital Projects</u>	<u>Golf Course</u>	<u>Total</u>
General		1,512,500		1,512,500
Water & Wastewater	64,000		700,000	764,000
Impact Fee		385,000		385,000
Cemetery Perpetual Care	22,433			22,433
Total	\$86,433	\$1,897,500	\$700,000	\$2,683,933

City of Louisville
Notes to the Financial Statements
December 31, 2008

Note 5: Inter-fund receivables/payables and transfers (continued)

The Water & Wastewater Fund annually transfers to the General Fund to pay for administrative support costs.

The General Fund annually receives transfers from the Cemetery for the interest collected in the fund during the year to help cover operating costs.

The General Fund transfer to the Capital Projects Fund is for land acquisition.

The Impact Fee Fund transfer to the Capital Projects Fund is for transportation projects.

The Water & Wastewater Fund transfer to the Golf Fund is for capital improvements.

Note 6: Restricted assets

Under the terms of the loan agreement with the Colorado Water Resources and Power Development Authority, the City is required to maintain an operations and maintenance reserve of an amount equal to three months of operation and maintenance expenses. At December 31, 2008, the balance in the reserve is \$1,030,617. In addition, the loan agreement requires the City's compliance with the rate covenant and the additional bonds test. At December 31, 2008, the City is in compliance with these covenants.

City of Louisville
Notes to the Financial Statements
December 31, 2008

Note 7: Capital assets

A. Governmental Activities

A summary of changes in capital assets for the year ended December 31, 2008 is as follows:

	Balance at 1/1/2008	Additions	Deletions	Balance at 12/31/2008
Capital assets not being depreciated:				
Land and Easements	\$ 29,041,634	\$ 1,510,553	\$ -	\$ 30,552,187
Total capital assets, not being depreciated	<u>29,041,634</u>	<u>1,510,553</u>	<u>-</u>	<u>30,552,187</u>
Other capital assets:				
Buildings	18,979,012	106,828	-	\$ 19,085,840
Infrastructure improvements	71,171,166	2,553,746	-	73,724,912
Machinery and equipment	7,468,180	523,986	(574,545)	7,417,621
Total other capital assets at historical cost	<u>97,618,358</u>	<u>3,184,560</u>	<u>(574,545)</u>	<u>100,228,373</u>
Less accumulated depreciation for:				
Buildings	(3,395,890)	(550,093)	-	(3,945,983)
Infrastructure improvements	(31,541,697)	(2,445,196)	-	(33,986,893)
Machinery and equipment	(5,748,389)	(619,696)	574,545	(5,793,540)
Total accumulated depreciation	<u>(40,685,976)</u>	<u>(3,614,985)</u>	<u>574,545</u>	<u>(43,726,416)</u>
Other capital assets, net	<u>56,932,382</u>	<u>(430,425)</u>	<u>-</u>	<u>56,501,957</u>
Governmental activities capital assets, net	<u>\$ 85,974,016</u>	<u>\$ 1,080,128</u>	<u>\$ -</u>	<u>\$ 87,054,144</u>

*Depreciation expense was charged to functions as follows:

Governmental activities:	Additions
General government	179,405
Finance	6,860
Police	276,044
Public works	1,766,486
Library	221,944
Parks and recreation	815,539
In addition, depreciation on capital assets held by the City's internal service funds (see Exhibit 5) is charged to the various functions based on the percentage of contribution to the fund.	<u>348,707</u>
Total governmental activities depreciation expense	<u>\$ 3,614,985</u>

City of Louisville
Notes to the Financial Statements
December 31, 2008

Note 7: Capital assets (continued)

B. Business-type activities

	<u>Balance at 1/1/2008</u>	<u>Additions</u>	<u>Deletions</u>	<u>Balance at 12/31/2008</u>
Capital assets not being depreciated:				
Land	\$ 4,294,683	\$ -	\$ -	\$ 4,294,683
Water rights	<u>30,443,120</u>	<u>-</u>	<u>-</u>	<u>30,443,120</u>
Total capital assets not being depreciated	<u>34,737,803</u>	<u>-</u>	<u>-</u>	<u>34,737,803</u>
Other capital assets:				
Buildings	1,134,146	9,700	-	1,143,846
Infrastructure improvements	61,817,682	620,517	-	62,438,199
Machinery and equipment	<u>3,179,920</u>	<u>196,751</u>	<u>(98,782)</u>	<u>3,277,889</u>
Total other capital assets at historical cost	<u>66,131,748</u>	<u>826,968</u>	<u>(98,782)</u>	<u>66,859,934</u>
Less accumulated depreciation for:				
Buildings	(522,820)	(39,204)	-	(562,024)
Infrastructure improvements	(22,193,673)	(1,266,755)	-	(23,460,428)
Machinery and equipment	<u>(2,564,678)</u>	<u>(179,539)</u>	<u>98,782</u>	<u>(2,645,435)</u>
Total accumulated depreciation	<u>(25,281,171)</u>	<u>(1,485,498)</u>	<u>98,782</u>	<u>(26,667,887)</u>
Other capital assets, net	<u>40,850,577</u>	<u>(658,530)</u>	<u>-</u>	<u>40,192,047</u>
Business-type activities capital assets, net	<u>\$ 75,588,380</u>	<u>\$ (658,530)</u>	<u>\$ -</u>	<u>\$ 74,929,850</u>

* Depreciation expense was charged to functions as follows:

Business-type activities:

Water & Wastewater	1,362,805
Golf	<u>122,692</u>

Total Business-type activities depreciation expense \$ 1,485,498

City of Louisville
Notes to the Financial Statements
December 31, 2008

Note 8: Long-term debt

A. Changes in long-term liabilities

	Balance at 1/1/2008	Additions	Reductions	Balance at 12/31/2008	Due within One Year
Governmental activities					
Bonds payable:					
<i>Sales tax refunding revenue bonds</i>					
2003 Sales Tax Bonds	\$ 2,415,000	\$ -	\$ (375,000)	\$ 2,040,000	\$ 385,000
Bond Premium	27,939	-	(4,656)	23,283	-
Loss on Refunding	(77,594)	-	12,933	(64,661)	-
	<u>2,365,345</u>	<u>-</u>	<u>(366,723)</u>	<u>1,998,622</u>	<u>385,000</u>
<i>Library Long Term Debt GO Bonds</i>					
2004 Library Bonds	6,260,000	-	(295,000)	5,965,000	305,000
Bond Premium	25,120	-	(1,570)	23,550	-
	<u>6,285,120</u>	<u>-</u>	<u>(296,570)</u>	<u>5,988,550</u>	<u>305,000</u>
Total	<u>8,650,465</u>	<u>-</u>	<u>(663,293)</u>	<u>7,987,172</u>	<u>690,000</u>
Other liabilities:					
<i>Compensated absences</i>	592,895	739,399	(776,714)	555,580	61,114
Governmental activities long-term liabilities	<u>\$ 9,243,360</u>	<u>\$ 739,399</u>	<u>\$ (1,440,007)</u>	<u>\$ 8,542,752</u>	<u>\$ 751,114</u>
Business-type activities					
Bonds, notes and lease payable:					
<i>Golf Course:</i>					
2002 General obligation golf course bonds	\$ 1,190,000	\$ -	\$ (220,000)	\$ 970,000	230,000
Deferred loss on refunding	(32,938)	-	6,588	(26,350)	-
Premium on note	4,338	-	(868)	3,470	-
Subtotal	<u>1,161,400</u>	<u>-</u>	<u>(214,280)</u>	<u>947,120</u>	<u>230,000</u>
<i>Water Notes Payable:</i>					
2003 Water CWRPDA Loan	11,740,000	-	(540,000)	11,200,000	555,000
Deferred loss on refunding	(59,658)	-	3,729	(55,929)	-
1992 Water CWRPDA Loan	2,718,333	-	(495,833)	2,222,500	530,000
Subtotal	<u>14,398,675</u>	<u>-</u>	<u>(1,032,104)</u>	<u>13,366,571</u>	<u>1,085,000</u>
<i>Windy Gap Lease Payments</i>					
	470,812	-	(35,250)	435,562	37,468
Deferred loss on refunding	(28,050)	-	2,805	(25,245)	-
Subtotal	<u>442,762</u>	<u>-</u>	<u>(32,445)</u>	<u>410,317</u>	<u>37,468</u>
Total	<u>16,002,837</u>	<u>-</u>	<u>(1,278,829)</u>	<u>14,724,008</u>	<u>1,352,468</u>
Other liabilities:					
<i>Compensated absences</i>	158,311	216,081	(218,976)	155,416	17,096
Business-type activities long-term liabilities	<u>\$ 16,161,148</u>	<u>\$ 216,081</u>	<u>\$ (1,497,805)</u>	<u>\$ 14,879,424</u>	<u>\$ 1,369,564</u>

Compensated absences in both governmental and business-type activities are classified as long-term liabilities. The City believes that the current portion of compensated absences is \$61,114 in the governmental funds and \$17,096 in the business type activity funds for a total of \$78,248. Compensated absences of the governmental activities are expected to be paid from the General and the Capital Projects Fund.

City of Louisville
Notes to the Financial Statements
December 31, 2008

Note 8: Long-term debt (continued)

B. Bonds payable – government activities

Bonds payable at December 31, 2008 are comprised of the following issues:

The 2.0%-3.5%, Series 2003 Sales Tax Refunding Revenue Bonds mature annually beginning on December 1, 2004 through December of 2013. During the year ended December 31, 2008, pledged revenues derived from one-third (1/3) of the sales tax revenues in the Capital Improvement Fund totaling \$910,217 were available to pay annual debt service of \$450,863. Remaining debt service at December 31, 2008, was \$2,249,664.

The 2.0%-5.0% Series 2004 Sales Limited Tax General Obligation Library Bonds mature annually beginning on December 1, 2004 through December 2023. Remaining debt service at December 31, 2008, was \$7,967,536.

C. Bonds payable – business-type activities

The 2.5% to 3.6%, 2002 General Obligation Refunding Golf Bonds mature annually through November 1, 2012. Remaining debt service at December 31, 2008, was \$1,055,415.

D. Notes payable - enterprise funds

The 2.0% to 4.125% 2003 Series A Colorado Water Resources and Power Development Authority Water Resources Revenue Bonds Mature annually on December 1 with semi-annual interest payments through December 1, 2024.

A note payable dated April 1, 1992 with the Colorado Water Resources and Power Development Authority. The interest is tied to two bond issues of 3.8% to 6.7%, and is payable in monthly installments to an escrow account, with semi-annual distributions to the Authority beginning on May 1, 1992 through October 1, 2012.

During the year ended December 31, 2008, net revenues of \$4,684,006 were available to pay annual debt service for these loans, of \$1,587,418. Remaining debt service at December 31, 2008, was \$17,524,139.

E. Capital lease payable - enterprise funds

On November 3, 1994, the City entered into a water rights lease with option to purchase with the City of Greeley, Colorado for \$708,457. The interest rate is 4.0% to 5.1%. Payments of both principal and interest are due on April 1st of each year, through 2017. Payments are calculated based on the debt service paid by the Northern Colorado Water Conservancy District. At the end of the lease, title to the three units of Windy Gap Water will transfer to the City. The lease is serviced by the Water Fund. Remaining debt service at December 31, 2008, was \$561,445.

City of Louisville
Notes to the Financial Statements
December 31, 2008

Note 8: Long-term debt (continued)

F. Debt requirements to maturity

The annual debt service requirements for all bonds and notes outstanding as of December 31, 2008, are as follows:

Governmental Activities

Year	Sales Tax Bonds		General Obligation Bonds	
	Principal	Interest	Principal	Interest
2009	\$ 385,000	\$ 66,488	\$ 305,000	\$ 214,978
2010	395,000	54,938	315,000	207,353
2011	405,000	43,088	325,000	198,533
2012	420,000	29,925	335,000	188,783
2013	435,000	15,225	350,000	178,733
2014-2018	-	-	1,955,000	708,266
2019-2023	-	-	2,380,000	305,890
2024	-	-	-	-
Balance	<u>\$ 2,040,000</u>	<u>\$ 209,664</u>	<u>\$ 5,965,000</u>	<u>\$ 2,002,536</u>

Business - Type Activities

Year	Notes		General Obligation Bonds	
	Principal	Interest	Principal	Interest
2009	\$ 1,085,000	\$ 503,475	\$ 230,000	\$ 32,805
2010	1,126,667	459,451	240,000	25,675
2011	1,181,667	407,874	245,000	17,755
2012	1,124,166	359,499	255,000	9,180
2013	615,000	327,013	-	-
2014-2018	3,365,000	1,331,139	-	-
2019-2023	4,025,000	676,063	-	-
2024	900,000	37,125	-	-
Balance	<u>\$ 13,422,500</u>	<u>\$ 4,101,639</u>	<u>\$ 970,000</u>	<u>\$ 85,415</u>

Leases

Year	<u>Business-Type Activities</u>
2009	\$ 61,971
2010	61,970
2011	61,970
2012	62,022
2013	62,024
2014-2018	<u>251,488</u>
Total	561,445
Interest	<u>(125,883)</u>
Balance	<u>\$ 435,562</u>

City of Louisville
Notes to the Financial Statements
December 31, 2008

Note 9: Retirement commitments – employee pension plan

The City provides a qualified defined contribution pension plan, administered by the ICMA Retirement Trust, for all regular full-time and regular part-time employees. At December 31, 2008, there were 145 plan members. This plan is provided through the ICMA Retirement Corporation Prototype 401(a) Money Purchase Plan and Trust. This plan does not meet the standards of generally accepted accounting principles for inclusion as part of the reporting entity.

In a defined contribution plan, benefits depend solely on amounts contributed to the plan plus investment earnings. Employees are required to participate from date of employment. The City requires the employee to contribute 4.5% of earnings with the City matching 5.0% for the plan year. Plan provisions and contribution requirements have been adopted by the City Council. Changes to the plan can be made by the City Manager.

Earnings include base pay, overtime and any applicable bonuses. All contributions and earnings are vested as follows:

Years of Service <u>Completed</u>	Specified Percent <u>Vested</u>
Less than One	0%
One	50%
Two	100%

All administrative costs of the plan are borne by the participants of the plan. City contributions for, and interest forfeited by, employees who leave employment before partially or fully vested may be used to reduce future City contributions. The 2008 contributions were \$360,183 from employees and \$397,550 from the City for a total of \$757,733. Wages paid by the City in 2008 totaled \$8,920,130, with regular full-time and regular part-time benefited employees receiving \$8,031,076.

In addition, employees may participate in an Internal Revenue Code 457 Plan on a voluntary basis. (The City only makes contributions to the City Manager's 457 Plan, an amount equal to 10% of his base salary).

Note 10: Risk management

The City is exposed to various risks of loss related to torts; theft of, damage to and destruction of assets; errors and omissions; injuries to employees and natural disasters. The City carries commercial insurance for the risks of loss, including worker's compensation, and property and casualty loss insurance. Settled claims resulting from these risks have not exceeded commercial insurance coverage in any of the past three fiscal years. Limits of insurance coverage remain unchanged in the past three years.

City of Louisville
Notes to the Financial Statements
December 31, 2008

Note 11: Commitments

A. Windy Gap

The Municipal Subdistrict, Northern Colorado Water Conservancy District (Subdistrict) was established July 6, 1970, pursuant to the Water Conservancy District Act. The subdistrict is a political subdivision of the State of Colorado. In 1994, the City of Louisville entered into a lease purchase arrangement for three units of Windy Gap Water from the City of Greeley, Colorado. The subdistrict currently provides a portion of the water supply for the cities of Boulder, Broomfield, Greeley, Longmont, Loveland, the Town of Estes Park, the Platte River Power Authority, and various other domestic water suppliers.

The City entered into an agreement with the Superior Metropolitan District No. 1 for the purchase of Six Units of Windy Gap Water. The Subdistrict was formed by six municipalities to develop supplemental water supplies. In 1981, the Subdistrict issued bonds to finance the cost of the Windy Gap Project. Under this agreement, the City is responsible for all the Northern Colorado Water Conservancy District's continuing obligations for the payment of those assessments due and owing on the Six Units of Windy Gap Water beginning in 2003. The City's future payments under the contract are as follows:

<u>Year</u>	<u>Payment</u>
2009	\$123,943
2010	123,940
2011	123,940
2012	124,043
2013	124,038
2014 – 2017	<u>502,975</u>
Balance	\$ 1,122,879

The governing board of the Subdistrict is a Board of twelve (12) directors appointed for four-year terms by the presiding State District Court Judges of each of the four judicial districts located wholly or partly within the boundaries of the Northern Colorado Water Conservancy District. Officers are elected by the Board of Directors at its annual meeting. The City and other participating entities have no direct control over the Subdistrict's budgeting or financing.

In 1997, the City of Louisville received final acceptance and entered into the Subdistrict. On August 23, 1995 the City entered into an allotment contract for capacity in the connecting pipeline from the main pipeline referenced above to the Superior/Louisville pump station. From this point, Louisville has implemented, on their own, connections to their water treatment facilities.

The City had previously repaid \$344,400 for preliminary and final design, project administration, environmental evaluations and other necessary work. In addition, the City provided \$948,600 for construction of the pipeline itself.

City of Louisville
Notes to the Financial Statements
December 31, 2008

Note 11: Commitments (continued)

On January 14, 1994, the City entered into an allotment contract with the Northern Colorado Water Conservancy District (District), acting by and through the Southern Water Supply Project Water Activity Enterprise, for flow capacity in the Southern Water Supply Project Pipeline. The Southern Water Supply Project Pipeline begins below the Carter Lake Outlet Works and ends approximately 4 miles north of Louisville. Under this contract, the City, along with other Colorado governmental entities, has the perpetual exclusive right to use 2.58 million gallons per day of capacity in the Pipeline. The other entities and their flow capacity in the pipeline are the Cities of Broomfield (8.00), Fort Lupton (5.16), Fort Morgan (6.13), Longmont (8.71), the Towns of Berthoud (2.58), Erie (1.03), Hudson (1.03), and the Little Thompson/Central Weld County Water Districts (16.13). During 2001, the City purchased additional capacity in the Pipeline for \$374,315. This increased the City's capacity by an additional 80%.

B. Northwest Parkway

On February 18, 1999, the City entered into an Intergovernmental Agreement with the City of Broomfield, the City of Lafayette, and the County of Boulder to create a comprehensive development plan for southeast Boulder County, South 96th Street, Dillon Road and US 287. This agreement plans for the Northwest Parkway and the surrounding area. The agreement provides that bonds will be sold by the Northwest Parkway Authority. Out of the proceeds, Louisville received \$5,000,000 towards the purchase of open space. This was paid directly from the Northwest Parkway Authority to Boulder County on Louisville's behalf in 2001 for the purchase of open space. An amendment to the agreement, dated January 16, 2001, identifies road priorities to be paid from the bond proceeds. This specifies that \$12,000,000 will be allocated to the South 96th Street improvements.

In 2002, the Northwest Parkway Authority paid to the City \$12,190,151 for the 96th Street improvements and accrued interest. The design phase of the South 96th Street improvements was completed in 2003. The contract for the construction was awarded in November of 2003 and the construction was completed in 2005. Final payout of the project has not been resolved as of the December 2008.

C. Redevelopment Agreement

In December 2006, the City established the Louisville Revitalization Commission and approved an urban renewal plan for certain blighted areas within the City. Beginning in 2008, the Louisville Revitalization Commission collected tax increment revenues in the amount of \$18,439 to finance improvements in the blighted areas. The agreement expires in December 2032.

City of Louisville
Notes to the Financial Statements
December 31, 2008

Note 12: Contingent liabilities

Litigation

Various suits and claims are pending against the City as of December 31, 2008. Although the outcome of such suits and claims cannot be predicted with certainty, the City believes that the final outcome of these matters will not materially affect the financial statements of the City and that adequate insurance coverage exists in most cases to cover any potential settlement.

Conduit Debt

In 2005, the City exercised its right to issues Revenue Bonds as authorized by the provisions of the County and Municipality Revenue Bond Act, article 3, title 29, C.R.S., to finance land, buildings or other improvements and properties suitable or used for or in connection with health-care purposes, all to the end that the City may be able to promote economic activity by inducing nonprofit corporation to locate, expand or remain in the State for the benefit of the inhabitants of the State for the promotion of their health, safety, welfare, convenience and prosperity.

The bonds are secured by the property financed and are payable solely from payments received on the underlying mortgage loans. Neither the City, the State, nor any political subdivision thereof is obligated in any manner for repayment of the bonds. Accordingly, the bonds are not reported as liabilities in the accompanying financial statements.

As of December 31, 2008, one series of Tax Exempt Revenue Bonds were outstanding with a principal balance in the amount of \$595,197.

Note 13: Tax, spending, and debt limitations

At the November 3, 1992 general election, Colorado voters approved an amendment to the Colorado Constitution commonly known as the Taxpayer's Bill of Rights (TABOR). TABOR became effective December 31, 1992, and its provisions limit government taxes, spending revenues, and debt without electoral approval. Since this time several ballot issues have been presented to the Louisville citizens that impact the limitation.

1993 – Open space tax approved.

1994 – Open space bond issue and the use tax on residential building materials were approved.

1996 – Authorization was given for the City to receive and expend all sales and use tax revenues, exempting these revenues from the TABOR limitation.

1997 – A revenue-sharing intergovernmental agreement was approved, exempting these revenues from the TABOR limitations.

1998 – The City Council, by ordinance, declared the Golf Course Fund an enterprise under the TABOR definition.

City of Louisville
Notes to the Financial Statements
December 31, 2008

Note 13: Tax, spending, and debt limitations (continued)

1999 – Authorization to keep and spend the revenues collected and received during 1998 and each subsequent year from fees, state and local grants, developer contributions, intergovernmental revenues and payments in lieu of land dedications.

2001 – Approval allowing the City to keep the excess property taxes collected in 2000 and exempts all future property taxes from the TABOR limitations.

2002 – Approval of a new Lodging Excise Tax in the amount of 3% and exempting these revenues from the TABOR limitations.

2002 – Extension of the open space tax for another ten years beginning on January 1, 1994 and ending on December 31, 2013 and exempting these revenues from the TABOR limitations.

2003 – Library bond issue and the additional mill levy not to exceed 1.581 were approved.

2005 – A use tax on personal tangible property was placed on the ballot in 2005 and failed.

2006 – A use tax on personal tangible property was placed on the ballot in 2006 and failed.

2006 – The City Council, by ordinance, declared the Storm Water Utility Fund an enterprise under the TABOR definition.

2008 – Voter approval of a .125% sales tax for Historic Preservation.

Under the TABOR Amendment, all taxes (except as previously noted), licenses and permits, charges for services, fines and forfeitures, and miscellaneous revenue (except developer contributions and payments in lieu of land dedications) are part of the limitation calculation. Transfers into the fund and debt service (except the open space bond) are deducted. The remainder may increase by the combination of the local growth rate and the rate of inflation in the Denver/Boulder Area.

TABOR Amendment provisions require that annual property tax revenue changes be restricted to the same growth rate applicable to the City's general spending. In 2001 the voters approved exemption from this provision.

The TABOR Amendment also requires the local government to reserve three percent of total expenditures for emergencies in 1995 and years thereafter. (The definition of an "emergency," under TABOR is restricted to natural events, but excludes "economic conditions, revenue shortfalls, or district salary or fringe benefit increase.") Accordingly, the City has reviewed the existing reserves and determined that a minimum of 3%, or \$602,901 existed at December 31, 2008, to comply with the provisions of the TABOR Amendment.

City of Louisville
Notes to the Financial Statements
December 31, 2008

Note 13: Tax, spending, and debt limitations (continued)

The TABOR Amendment excludes activities or funds considered to be “enterprises.” The classification of an “enterprise” under the TABOR Amendment is based on three criteria: (1) the entity be considered a government-owned business; (2) the entity be authorized to issue its own revenue bonds; (3) the entity receive under 10% of its annual revenue in grants from all Colorado and local governments combined. The Water Utility Fund and Sewer Utility Fund, as approved by Ordinance No. 1167 and 1168, Series 1994, were declared enterprises under the TABOR Amendment definition. These two funds were combined as one enterprise fund by Ordinance No. 1412, Series 2003. Storm water activities were added to the Water and Wastewater Utility Fund by Ordinance 1502, Series 2006. The Golf Course Fund, as approved by Ordinance No. 1280, Series 1998, was given enterprise status in 1998.

This page intentionally left blank.



Required Supplementary Information

City of Louisville, Colorado
Budgetary Comparison Schedule
General Fund
For the Year Ending December 31, 2008

	<u>Budget</u>		<u>Actual</u> Amounts	<u>Variance with</u> <u>Final Budget -</u> <u>Positive (Negative)</u>
	<u>Original</u>	<u>Final</u>		
Revenues				
Taxes:				
Property tax	\$ 2,171,000	\$ 2,171,000	\$ 2,186,615	\$ 15,615
Sales tax	5,440,000	5,440,000	5,649,859	209,859
Use tax	967,000	967,000	802,980	(164,020)
Lodging tax	354,000	354,000	369,019	15,019
Franchise tax	994,000	994,000	1,142,519	148,519
Other taxes	190,000	190,000	172,116	(17,884)
Licenses and permits	797,500	797,500	697,091	(100,409)
Intergovernmental	811,000	811,000	832,963	21,963
Charges for services	1,473,500	1,473,500	1,512,980	39,480
Fines and forfeits	195,000	195,000	186,993	(8,007)
Miscellaneous	369,000	369,000	355,316	(13,684)
Total revenues	<u>13,762,000</u>	<u>13,762,000</u>	<u>13,908,451</u>	<u>146,451</u>
Expenditures				
Current:				
General government	2,100,862	2,172,912	1,978,203	194,709
Finance	337,113	337,113	348,696	(11,583)
Police	3,915,149	3,915,149	3,867,488	47,661
Public works	2,550,615	2,579,615	2,602,796	(23,181)
Planning	761,798	798,798	777,449	21,349
Library services	1,204,992	1,204,992	1,103,086	101,906
Parks and Recreation	2,648,291	2,649,071	2,499,768	149,303
Total expenditures	<u>13,518,820</u>	<u>13,657,650</u>	<u>13,177,486</u>	<u>480,164</u>
Excess (deficiency) of revenues over expenditures	<u>243,180</u>	<u>104,350</u>	<u>730,965</u>	<u>626,615</u>
Other financing sources (uses)				
Transfers In	94,000	94,000	86,433	(7,567)
Transfers Out	-	(1,512,500)	(1,512,500)	-
Total other financing sources (uses)	<u>94,000</u>	<u>(1,418,500)</u>	<u>(1,426,067)</u>	<u>(7,567)</u>
Net change in fund balances	<u>\$ 337,180</u>	<u>\$ (1,314,150)</u>	<u>(695,102)</u>	<u>\$ 619,048</u>
Fund balances, January 1			<u>5,358,797</u>	
Fund balances, December 31			<u>\$ 4,663,695</u>	

See the accompanying independent auditors' report

City of Louisville, Colorado
Budgetary Comparison Schedule
Conservation Trust - Land Acquisition Fund
For the Year Ending December 31, 2008

	<u>Budget</u>		<u>Actual</u> <u>Amounts</u>	<u>Variance with</u> <u>Final Budget -</u> <u>Positive (Negative)</u>
	<u>Original</u>	<u>Final</u>		
Revenues				
Taxes:				
Sales tax	\$ 1,020,000	\$ 1,020,000	\$ 1,037,322	\$ 17,322
Use tax	147,000	147,000	129,869	(17,131)
Miscellaneous	<u>173,000</u>	<u>173,000</u>	<u>405,761</u>	<u>232,761</u>
Total revenues	<u>1,340,000</u>	<u>1,340,000</u>	<u>1,572,952</u>	<u>232,952</u>
Expenditures				
General Government	953,839	981,839	926,856	54,983
Capital outlay	<u>193,100</u>	<u>224,700</u>	<u>126,218</u>	<u>98,482</u>
Total expenditures	<u>1,146,939</u>	<u>1,206,539</u>	<u>1,053,074</u>	<u>153,465</u>
Excess (deficiency) of revenues over expenditures	<u>193,061</u>	<u>133,461</u>	<u>519,878</u>	<u>386,417</u>
Net change in fund balances	<u>\$ 193,061</u>	<u>\$ 133,461</u>	\$ 519,878	<u>\$ 386,417</u>
Fund balances, January 1			<u>6,947,822</u>	
Fund balances, December 31			<u>\$ 7,467,700</u>	

See the accompanying independent auditors' report

City of Louisville, Colorado
Notes to Required Supplementary Information
December 31, 2008

Note 1: Budgets and budgetary accounting

The City Council follows these procedures in establishing the budgetary data reflected in the financial statements:

1. The City Manager submits a proposed operating budget to the Mayor and the City Council for the fiscal year commencing the following January 1. The operating budget includes proposed expenditures of all funds and the means of financing them.
2. A public hearing is conducted to obtain taxpayer comments.
3. Prior to the end of the fiscal year, the budget is legally adopted through passage of a resolution. An appropriation resolution, based on the adopted budget, is enacted on or before the last day of December.
4. Any revisions that alter the total appropriations of any fund must be approved by the City Council. The City's department heads may approve transfers within their department and the City Manager may approve transfers between departments.
5. The level on which expenditures may not legally exceed appropriations is the legally adopted annual operating budget for each fund in total. All appropriations lapse at year-end.
6. Budgets for the general, special revenue, debt service, capital projects, and permanent funds are adopted on a basis consistent with Generally Accepted Accounting Principles (GAAP).
7. Budgets for proprietary funds are adopted on a basis consistent with generally accepted accounting principles, except that the City excludes depreciation and amortization and includes debt service principal payments and capital outlay.
8. The City Council may legally amend the budget by resolution once it has been approved. Budgeted amounts, including all amendments, are shown as adopted by the City Council.



Other Statements & Schedules

This page intentionally left blank.

NON-MAJOR GOVERNMENTAL FUNDS

Special Revenue Funds

Special revenue funds are used to account for specific revenues that are legally restricted to expenditures for particular purposes

Public Access TV Fund– This fund is was created in 2006 in response to Resolution No. 22, Series 2006 that approved an agreement between the City of Louisville and Citizens Community Access Cable Television Management.

Parking Improvement Fund – This fund is was created in 2000 to account for the downtown parking fee of \$10,500 per parking space established through Ordinance #1341.

McCaslin Interchange Improvement Fund – The McCaslin Interchange Improvement Fund was created in 1998 as the result of an intergovernmental agreement with the Town of Superior to improve the McCaslin and Highway 36 interchange.

Conservation Trust – Lottery Fund – Revenues from sales and use tax are used exclusively for the acquisition and maintenance of land in and around Louisville for open space buffer zones, trails, wildlife habitats, wetlands preservation and future parks.

Impact Fee Fund – The Impact Fee Fund was created in 2004 as a result of Ordinance No. 1436 Series 2003. This ordinance was to establish development impact fees for libraries, parks, trails, recreation, municipal facilities and transportation.

Northwest Parkway Fund – The Northwest Parkway Fund was created in 2002 to account for \$12 million in revenue received from the Northwest Parkway Authority as part of the Intergovernmental Agreement with the City of Broomfield, the City of Lafayette, and the County of Boulder to create a comprehensive development plan for southeast Boulder County, South 96th Street, Dillon Road, and US 287. Revenues from the Northwest Parkway Authority are used exclusively for the improvements to South 96th Street and the purchase of open space as identified in this agreement.

Urban Revitalization District Fund – The Urban Revitalization District Fund was approved and established by City Council in 2006. This ordinance was to establish development impact fees for libraries, parks, trails, recreation, municipal facilities and transportation.

Capital Projects Funds

Capital projects funds are used to account for financial resources to be used for the acquisition or construction of major capital facilities.

Library Construction Fund – This fund was established in 2004 to account for the construction of the new library. As this construction of the library is nearing completion, the remaining money if any, will transfer to the debt service fund for prepayment of debt.

Debt Service Fund

Library Debt Service Fund – The Debt Service Fund was established in 2004 to account for the debt service payments on bonds that were issued in 2004 for the construction of a new library. As approved by the voters at the general elections in 2003, the City imposed a mill levy, not to exceed 1.581 mills to offset the debt service payments for the bonded debt.

Permanent Fund

Cemetery Perpetual Care Fund – This fund is used to account for principal trust amounts received and related interest income. The interest portion of the trust is used to maintain the community cemetery.

This page intentionally left blank.

**City of Louisville, Colorado
Combining Balance Sheet
Nonmajor Governmental Funds
December 31, 2008**

	Special Revenue						
	Public Access TV	Parking Improvement	McCaslin Interchange	Conservation Trust - Lottery	Impact Fee	Northwest Parkway	Urban Revitalization
ASSETS							
Current assets:							
Cash and cash equivalents	\$ 19,457	\$ 50,965	\$ 694,518	\$ 532,843	\$ 1,066,289	\$ 1,023,181	\$ 7,437
Receivables:							
Property tax receivable	-	-	-	-	-	-	-
Interest receivable	64	173	4,611	4,181	8,548	-	63
Total assets	<u>\$ 19,521</u>	<u>\$ 51,138</u>	<u>\$ 699,129</u>	<u>\$ 537,024</u>	<u>\$ 1,074,837</u>	<u>\$ 1,023,181</u>	<u>\$ 7,500</u>
LIABILITIES							
Accounts payable	-	-	-	12,627	-	608,817	7,500
Deferred property taxes	-	-	-	-	-	-	-
Advances from other funds	-	150,000	-	-	-	-	-
Total Liabilities	<u>-</u>	<u>150,000</u>	<u>-</u>	<u>12,627</u>	<u>-</u>	<u>608,817</u>	<u>7,500</u>
FUND BALANCE							
Reserved for cemetery perpetual care	-	-	-	-	-	-	-
Reserved for library construction	-	-	-	-	-	-	-
Reserved for debt service	-	-	-	-	-	-	-
Unreserved, undesignated	19,521	(98,862)	699,129	524,397	1,074,837	414,364	-
Total fund balances	<u>19,521</u>	<u>(98,862)</u>	<u>699,129</u>	<u>524,397</u>	<u>1,074,837</u>	<u>414,364</u>	<u>-</u>
Total liabilities and fund balances	<u>\$ 19,521</u>	<u>\$ 51,138</u>	<u>\$ 699,129</u>	<u>\$ 537,024</u>	<u>\$ 1,074,837</u>	<u>\$ 1,023,181</u>	<u>\$ 7,500</u>

See accompanying independent auditors' report

Special Revenue Total	Capitol Projects	Debt Service Fund	Permanent Fund	Total
	Library Construction	Library Debt Service	Cemetery Perpetual Care	Nonmajor Governmental Funds
\$ 3,394,690	\$ 112,087	\$ 474,356	\$ 629,236	\$ 4,610,369
-		640,100	-	640,100
<u>17,640</u>	<u>-</u>	<u>4,048</u>	<u>4,183</u>	<u>25,871</u>
<u>\$ 3,412,330</u>	<u>\$ 112,087</u>	<u>\$ 1,118,504</u>	<u>\$ 633,419</u>	<u>\$ 5,276,340</u>
628,944	111	-	19,562	648,617
-		640,100	-	640,100
<u>150,000</u>	<u>-</u>	<u>-</u>	<u>-</u>	<u>150,000</u>
<u>778,944</u>	<u>111</u>	<u>640,100</u>	<u>19,562</u>	<u>1,438,717</u>
-	-	-	613,857	613,857
-	111,976	-	-	111,976
-	-	478,404	-	478,404
<u>2,633,386</u>	<u>-</u>	<u>-</u>	<u>-</u>	<u>2,633,386</u>
<u>2,633,386</u>	<u>111,976</u>	<u>478,404</u>	<u>613,857</u>	<u>3,837,623</u>
<u>\$ 3,412,330</u>	<u>\$ 112,087</u>	<u>\$ 1,118,504</u>	<u>\$ 633,419</u>	<u>\$ 5,276,340</u>

City of Louisville, Colorado
Combining Statement of Revenues, Expenditures,
and Changes in Fund Balances
Nonmajor Governmental Funds
For the Year Ended December 31, 2008

	Special Revenue						
	Public Access TV	Parking Improvement	McCaslin Interchange	Conservation Trust-Lottery	Impact Fee	Northwest Parkway	Urban Revitalization
REVENUES							
Property taxes	\$ -	\$ -	\$ -	\$ -	\$ -	\$ -	\$ 18,439
Licenses and permits	-	-	-	-	332,626	-	-
Intergovernmental	-	-	-	188,616	-	-	-
Miscellaneous	<u>687</u>	<u>2,062</u>	<u>37,579</u>	<u>33,692</u>	<u>72,606</u>	<u>48,918</u>	<u>11,561</u>
Total revenues	<u>687</u>	<u>2,062</u>	<u>37,579</u>	<u>222,308</u>	<u>405,232</u>	<u>48,918</u>	<u>30,000</u>
EXPENDITURES							
General government	-	-	-	-	-	151,668	30,000
Capital outlay	-	-	-	212,189	-	846,916	-
Debt service:							
Principal	-	-	-	-	-	-	-
Interest	-	-	-	-	-	-	-
Total expenditures	<u>-</u>	<u>-</u>	<u>-</u>	<u>212,189</u>	<u>-</u>	<u>998,584</u>	<u>30,000</u>
Excess (deficiency) of revenues over (under) expenditures	<u>687</u>	<u>2,062</u>	<u>37,579</u>	<u>10,119</u>	<u>405,232</u>	<u>(949,666)</u>	<u>-</u>
OTHER FINANCING SOURCES(USES)							
Transfer (out)	<u>-</u>	<u>-</u>	<u>-</u>	<u>-</u>	<u>(385,000)</u>	<u>-</u>	<u>-</u>
Total other financing sources(uses)	<u>-</u>	<u>-</u>	<u>-</u>	<u>-</u>	<u>(385,000)</u>	<u>-</u>	<u>-</u>
Net change in fund balance	687	2,062	37,579	10,119	20,232	(949,666)	-
Fund balances (deficit), January 1	<u>18,834</u>	<u>(100,924)</u>	<u>661,550</u>	<u>514,278</u>	<u>1,054,605</u>	<u>1,364,030</u>	<u>-</u>
Fund balances (deficit), December 31	<u>\$ 19,521</u>	<u>\$ (98,862)</u>	<u>\$ 699,129</u>	<u>\$ 524,397</u>	<u>\$ 1,074,837</u>	<u>\$ 414,364</u>	<u>\$ -</u>

See the accompanying independent auditors' report

Special Revenue Total	Capital Projects	Debt Service Fund	Permanent Fund	Total Nonmajor Governmental Funds
	Library Construction	Library Debt Service	Cemetery Perpetual Care	
\$ 18,439	\$ -	\$ 640,762	\$ -	\$ 659,201
332,626	-	-	38,476	371,102
188,616	-	-	-	188,616
<u>207,105</u>	<u>5,508</u>	<u>30,122</u>	<u>34,172</u>	<u>276,907</u>
<u>746,786</u>	<u>5,508</u>	<u>670,884</u>	<u>72,648</u>	<u>1,495,826</u>
181,668	-	-	-	181,668
1,059,105	37,148	-	61,036	1,157,289
-	-	295,000	-	295,000
-	-	221,984	-	221,984
<u>1,240,773</u>	<u>37,148</u>	<u>516,984</u>	<u>61,036</u>	<u>1,855,941</u>
<u>(493,987)</u>	<u>(31,640)</u>	<u>153,900</u>	<u>11,612</u>	<u>(360,115)</u>
<u>(385,000)</u>	<u>-</u>	<u>-</u>	<u>(22,433)</u>	<u>(407,433)</u>
<u>(385,000)</u>	<u>-</u>	<u>-</u>	<u>(22,433)</u>	<u>(407,433)</u>
(878,987)	(31,640)	153,900	(10,821)	(767,548)
<u>3,512,373</u>	<u>143,616</u>	<u>324,504</u>	<u>624,678</u>	<u>4,605,171</u>
<u>\$ 2,633,386</u>	<u>\$ 111,976</u>	<u>\$ 478,404</u>	<u>\$ 613,857</u>	<u>\$ 3,837,623</u>

City of Louisville, Colorado
Budgetary Comparison Schedule
Public Access Television
For the Year Ending December 31, 2008

	<u>Budget</u>		<u>Actual</u> <u>Amounts</u>	<u>Variance with</u> <u>Final Budget -</u> <u>Positive (Negative)</u>
	<u>Original</u>	<u>Final</u>		
Revenues				
Miscellaneous	\$ -	\$ -	\$ 687	\$ 687
Total revenues	<u>-</u>	<u>-</u>	<u>687</u>	<u>687</u>
Expenditures				
General government	18,050	18,050	-	18,050
Capital outlay	<u>-</u>	<u>-</u>	<u>-</u>	<u>-</u>
Total expenditures	<u>18,050</u>	<u>18,050</u>	<u>-</u>	<u>18,050</u>
Excess (deficiency) of revenues over expenditures	<u>(18,050)</u>	<u>(18,050)</u>	<u>687</u>	<u>18,737</u>
Net change in fund balances	<u>\$ (18,050)</u>	<u>\$ (18,050)</u>	<u>687</u>	<u>\$ 18,737</u>
Fund balances, January 1			<u>18,834</u>	
Fund balances, December 31			<u>\$ 19,521</u>	

See the accompanying independent auditors' report

**City of Louisville, Colorado
 Budgetary Comparison Schedule
 Parking Improvement Fund
 For the Year Ending December 31, 2008**

	<u>Budget</u>		<u>Actual Amounts</u>	<u>Variance with Final Budget - Positive (Negative)</u>
	<u>Original</u>	<u>Final</u>		
Revenues				
Miscellaneous	-	-	2,062	2,062
Total revenues	-	-	2,062	2,062
 Net change in fund balances	<u>\$ -</u>	<u>\$ -</u>	2,062	<u>\$ 2,062</u>
 Fund balances, January 1			(100,924)	
Fund balances, December 31			<u>\$ (98,862)</u>	

See the accompanying independent auditors' report

**City of Louisville, Colorado
 Budgetary Comparison Schedule
 McCaslin Interchange Fund
 For the Year Ending December 31, 2008**

	<u>Budget</u>		<u>Actual Amounts</u>	<u>Variance with Final Budget - Positive (Negative)</u>
	<u>Original</u>	<u>Final</u>		
Revenues				
Miscellaneous	\$ 25,700	\$ 25,700	\$ 37,579	\$ 11,879
Total revenues	<u>25,700</u>	<u>25,700</u>	<u>37,579</u>	<u>11,879</u>
Excess (deficiency) of revenues over expenditures	<u>25,700</u>	<u>25,700</u>	<u>37,579</u>	<u>11,879</u>
Net change in fund balances	<u>\$ 25,700</u>	<u>\$ 25,700</u>	37,579	<u>\$ 11,879</u>
Fund balances, January 1			<u>661,550</u>	
Fund balances, December 31			<u>\$ 699,129</u>	

See the accompanying independent auditors' report

**City of Louisville, Colorado
 Budgetary Comparison Schedule
 Conservation Trust - Lottery Fund
 For the Year Ending December 31, 2008**

	<u>Budget</u>		<u>Actual Amounts</u>	<u>Variance with Final Budget - Positive (Negative)</u>
	<u>Original</u>	<u>Final</u>		
Revenues				
Intergovernmental	\$ 180,000	\$ 180,000	\$ 188,616	\$ 8,616
Miscellaneous	<u>20,000</u>	<u>20,000</u>	<u>33,692</u>	<u>13,692</u>
Total revenues	<u>200,000</u>	<u>200,000</u>	<u>222,308</u>	<u>22,308</u>
Expenditures				
Capital outlay	<u>261,150</u>	<u>424,150</u>	<u>212,189</u>	<u>211,961</u>
Total expenditures	<u>261,150</u>	<u>424,150</u>	<u>212,189</u>	<u>211,961</u>
Excess (deficiency) of revenues over expenditures	<u>(61,150)</u>	<u>(224,150)</u>	<u>10,119</u>	<u>234,269</u>
Net change in fund balances	<u><u>\$ (61,150)</u></u>	<u><u>\$ (224,150)</u></u>	10,119	<u><u>\$ 234,269</u></u>
Fund balances, January 1			<u>514,278</u>	
Fund balances, December 31			<u><u>\$ 524,397</u></u>	

See the accompanying independent auditors' report

City of Louisville, Colorado
Budgetary Comparison Schedule
Impact Fee Fund
For the Year Ending December 31, 2008

	<u>Budget</u>		<u>Actual</u> <u>Amounts</u>	<u>Variance with</u> <u>Final Budget -</u> <u>Positive (Negative)</u>
	<u>Original</u>	<u>Final</u>		
Revenues				
Licenses and permits	\$ 263,000	\$ 263,000	\$ 332,626	\$ 69,626
Miscellaneous	<u>12,000</u>	<u>12,000</u>	<u>72,606</u>	<u>60,606</u>
Total revenues	<u>275,000</u>	<u>275,000</u>	<u>405,232</u>	<u>130,232</u>
Excess (deficiency) of revenues over expenditures	<u>275,000</u>	<u>275,000</u>	<u>405,232</u>	<u>130,232</u>
Other financing sources (uses)				
Transfers out	<u>(385,000)</u>	<u>(385,000)</u>	<u>(385,000)</u>	<u>-</u>
Net change in fund balances	<u>\$ (110,000)</u>	<u>\$ (110,000)</u>	20,232	<u>\$ 130,232</u>
Fund balances, January 1			<u>1,054,605</u>	
Fund balances, December 31			<u>\$ 1,074,837</u>	

See the accompanying independent auditors' report

City of Louisville, Colorado
Budgetary Comparison Schedule
Northwest Parkway Fund
For the Year Ending December 31, 2008

	<u>Budget</u>		<u>Actual</u> <u>Amounts</u>	<u>Variance with</u> <u>Final Budget -</u> <u>Positive (Negative)</u>
	<u>Original</u>	<u>Final</u>		
Revenues				
Miscellaneous	64,500	64,500	48,918	(15,582)
Total revenues	<u>64,500</u>	<u>64,500</u>	<u>48,918</u>	<u>(15,582)</u>
Expenditures				
General Government	15,000	165,000	151,668	13,332
Capital outlay	<u>50,000</u>	<u>700,000</u>	<u>846,916</u>	<u>(146,916)</u>
Total expenditures	<u>65,000</u>	<u>865,000</u>	<u>998,584</u>	<u>(133,584)</u>
Excess (deficiency) of revenues over expenditures	<u>(500)</u>	<u>(800,500)</u>	<u>(949,666)</u>	<u>(149,166)</u>
Net change in fund balances	<u>\$ (500)</u>	<u>\$ (800,500)</u>	<u>(949,666)</u>	<u>\$ (149,166)</u>
Fund balances, January 1			<u>1,364,030</u>	
Fund balances, December 31			<u>\$ 414,364</u>	

See the accompanying independent auditors' report

**City of Louisville, Colorado
 Budgetary Comparison Schedule
 Urban Revitalization District Fund
 For the Year Ending December 31, 2008**

	<u>Budget</u>		<u>Actual Amounts</u>	<u>Variance with Final Budget - Positive (Negative)</u>
	<u>Original</u>	<u>Final</u>		
Revenues				
Property Taxes	\$ 19,250	\$ 19,250	\$ 18,439	\$ (811)
Miscellaneous	<u>20,750</u>	<u>20,750</u>	<u>11,561</u>	<u>(9,189)</u>
Total revenues	<u>40,000</u>	<u>40,000</u>	<u>30,000</u>	<u>(10,000)</u>
Expenditures				
General government	<u>40,000</u>	<u>40,000</u>	<u>30,000</u>	<u>10,000</u>
Total expenditures	<u>40,000</u>	<u>40,000</u>	<u>30,000</u>	<u>10,000</u>
Excess (deficiency) of revenues over expenditures	<u>-</u>	<u>-</u>	<u>-</u>	<u>-</u>
Net change in fund balances	<u>\$ -</u>	<u>\$ -</u>	<u>-</u>	<u>\$ -</u>
Fund balances, January 1			<u>-</u>	
Fund balances, December 31			<u>\$ -</u>	

See the accompanying independent auditors' report

**City of Louisville, Colorado
 Budgetary Comparison Schedule
 Library Construction Project Fund
 For the Year Ending December 31, 2008**

	<u>Budget</u>		<u>Actual Amounts</u>	<u>Variance with Final Budget - Positive (Negative)</u>
	<u>Original</u>	<u>Final</u>		
Revenues				
Miscellaneous	-	-	5,508	5,508
Total revenues	-	-	5,508	5,508
Expenditures				
Capital outlay	-	128,250	37,148	91,102
Total expenditures	-	128,250	37,148	91,102
Net change in fund balances	\$ -	\$ (128,250)	(31,640)	\$ 96,610
Fund balances, January 1			143,616	
Fund balances, December 31			<u>\$ 111,976</u>	

See the accompanying independent auditors' report

**City of Louisville, Colorado
 Budgetary Comparison Schedule
 Library Debt Service Fund
 For the Year Ending December 31, 2008**

	<u>Budget</u>		<u>Actual Amounts</u>	<u>Variance with Final Budget - Positive (Negative)</u>
	<u>Original</u>	<u>Final</u>		
Revenues				
Taxes:				
Property taxes	\$ 645,125	\$ 645,125	\$ 640,762	\$ (4,363)
Miscellaneous	-	-	30,122	30,122
Total revenues	<u>645,125</u>	<u>645,125</u>	<u>670,884</u>	<u>25,759</u>
Expenditures				
Debt service:				
Principal	295,000	295,000	295,000	-
Interest	221,984	221,984	221,984	-
Total expenditures	<u>516,984</u>	<u>516,984</u>	<u>516,984</u>	<u>-</u>
Net change in fund balances	<u>\$ 128,141</u>	<u>\$ 128,141</u>	153,900	<u>\$ 25,759</u>
Fund balances, January 1			<u>324,504</u>	
Fund balances, December 31			<u>\$ 478,404</u>	

See the accompanying independent auditors' report

**City of Louisville, Colorado
 Budgetary Comparison Schedule
 Cemetery Perpetual Care Fund
 For the Year Ending December 31, 2008**

	<u>Budget</u>		<u>Actual Amounts</u>	<u>Variance with Final Budget - Positive (Negative)</u>
	<u>Original</u>	<u>Final</u>		
Revenues				
Licenses and permits	\$ 50,000	\$ 50,000	\$ 38,476	\$ (11,524)
Miscellaneous	30,000	30,000	34,172	4,172
Total revenues	<u>80,000</u>	<u>80,000</u>	<u>72,648</u>	<u>(7,352)</u>
Expenditures				
Capital outlay	<u>30,000</u>	<u>59,500</u>	<u>61,036</u>	<u>(1,536)</u>
Excess (deficiency) of revenues over expenditures	<u>50,000</u>	<u>20,500</u>	<u>11,612</u>	<u>(8,888)</u>
Other financing sources (uses)				
Transfers out	<u>(30,000)</u>	<u>(30,000)</u>	<u>(22,433)</u>	<u>7,567</u>
Net change in fund balances	<u>\$ 20,000</u>	<u>\$ (9,500)</u>	<u>(10,821)</u>	<u>\$ (1,321)</u>
Fund balances, January 1			<u>624,678</u>	
Fund balances, December 31			<u>\$ 613,857</u>	

See the accompanying independent auditors' report

City of Louisville, Colorado
Budgetary Comparison Schedule
Capital Projects Fund
For the Year Ending December 31, 2008

	<u>Budget</u>		<u>Actual</u> <u>Amounts</u>	<u>Variance with</u> <u>Final Budget -</u> <u>Positive (Negative)</u>
	<u>Original</u>	<u>Final</u>		
Revenues				
Taxes:				
Sales tax	\$ 2,720,000	\$ 2,720,000	\$ 2,730,653	\$ 10,653
Use tax	250,000	250,000	226,661	(23,339)
Intergovernmental	1,440,000	1,440,000	147,633	(1,292,367)
Miscellaneous	115,000	115,000	228,953	113,953
Total revenues	<u>4,525,000</u>	<u>4,525,000</u>	<u>3,333,900</u>	<u>(1,191,100)</u>
Expenditures				
General Government	591,369	601,369	480,958	120,411
Capital outlay	5,828,600	8,031,100	3,206,050	4,825,050
Debt service:				
Principal	375,000	375,000	375,000	-
Interest	75,863	75,863	75,863	-
Total expenditures	<u>6,870,832</u>	<u>9,083,332</u>	<u>4,137,871</u>	<u>4,945,461</u>
Excess (deficiency) of revenues over expenditures	<u>(2,345,832)</u>	<u>(4,558,332)</u>	<u>(803,971)</u>	<u>3,754,361</u>
Other financing sources (uses)				
Transfers In	<u>385,000</u>	<u>1,897,500</u>	<u>1,897,500</u>	<u>-</u>
Net change in fund balances	<u>\$ (1,960,832)</u>	<u>\$ (2,660,832)</u>	1,093,529	<u>\$ 3,754,361</u>
Fund balances, January 1			<u>3,192,766</u>	
Fund balances, December 31			<u>\$ 4,286,295</u>	

See the accompanying independent auditors' report

ENTERPRISE FUNDS

Individual Fund Budget Schedules

Water and Wastewater Fund – These funds account for the provision of water, sewer and stormwater services to residents and some outside users. All activities that are necessary to providing such services are accounted for in these funds, including, but not limited to: administration and billing operations, environmental monitoring, capital outlay and maintenance, financing and related debt.

Golf Course Fund – This fund accounts for the revenue and expenditure activities of the Coal Creek Golf Course, which is owned and operated by the City of Louisville. Through Western Golf Properties, a golf course management company, the City operates a facility; collects and disburses monies; hires and employs all personnel; purchases and sells food, beverages, merchandise, supplies and services; and performs other day-to-day activities relative to the facility.

City of Louisville, Colorado
Budgetary Comparison Schedule
Water & Wastewater Fund
For the Year Ending December 31, 2008

	<u>Budget</u>		<u>Actual</u> <u>Amounts</u>	<u>Variance with</u> <u>Final Budget -</u> <u>Positive (Negative)</u>
	<u>Original</u>	<u>Final</u>		
Revenues				
Charges for services	\$ 7,082,400	\$ 7,082,400	\$ 6,836,012	\$ (246,388)
Tap fees	690,000	690,000	1,221,728	531,728
Investment Income	645,000	645,000	769,384	124,384
Total revenues	<u>8,417,400</u>	<u>8,417,400</u>	<u>8,827,124</u>	<u>409,724</u>
Expenditures				
General government operations	4,210,799	4,274,300	4,081,623	192,677
Capital outlay	1,225,500	1,406,900	322,302	1,084,598
Debt service	1,656,348	1,656,349	1,648,754	7,595
Transfer out	64,000	764,000	764,000	-
Total expenditures	<u>7,156,647</u>	<u>8,101,549</u>	<u>6,816,679</u>	<u>1,284,870</u>
Net Income (Loss), Budget Basis	<u>\$ 1,260,753</u>	<u>\$ 315,851</u>	2,010,445	<u>\$ 1,694,594</u>
Reconciliation from Budget Basis Expenditures (non-GAAP) to GAAP:				
Add:				
Capitalized assets			277,952	
Principal retired			1,071,083	
Subtract:				
Depreciation and amortization			<u>(1,369,339)</u>	
Change in Net Assets, December 31 GAAP Basis			<u>\$ 1,990,141</u>	

See the accompanying independent auditors' report

City of Louisville, Colorado
Budgetary Comparison Schedule
Golf Course Fund
For the Year Ending December 31, 2008

	<u>Budget</u>		<u>Actual</u> <u>Amounts</u>	<u>Variance with</u> <u>Final Budget -</u> <u>Positive (Negative)</u>
	<u>Original</u>	<u>Final</u>		
Revenues				
Charges for services	\$ 2,101,388	\$ 2,101,388	\$ 1,921,332	\$ (180,056)
Transfers In	-	-	700,000	700,000
Total revenues	<u>2,101,388</u>	<u>2,101,388</u>	<u>2,621,332</u>	<u>519,944</u>
Expenditures				
General government operations	1,674,789	1,780,200	1,760,949	19,251
Capital outlay	50,000	600,830	566,652	34,178
Debt service	<u>259,185</u>	<u>259,185</u>	<u>258,122</u>	<u>1,063</u>
Total expenditures	<u>1,983,974</u>	<u>2,640,215</u>	<u>2,585,723</u>	<u>54,492</u>
Net Income (Loss), Budget Basis	<u>\$ 117,414</u>	<u>\$ (538,827)</u>	35,609	<u>\$ 574,436</u>
Reconciliation from Budget Basis Expenditures (non-GAAP) to GAAP:				
Add:				
Capitalized assets			549,017	
Principal retired			220,000	
Subtract:				
Depreciation and amortization			<u>(131,076)</u>	
Change in Net Assets, December 31 GAAP Basis			<u>\$ 673,550</u>	

See the accompanying independent auditors' report

INTERNAL SERVICE FUNDS

Internal service funds are used to account for the financing of goods or services provided by one department or agency to other departments or agencies of the government and to other government units, on a cost reimbursement basis.

Building Maintenance Fund – In 2003, the City of Louisville established the Building Maintenance Fund for the purpose of accumulating funds for capital improvements to various City buildings.

Technology Management Fund – In 1999, the City of Louisville established the Technology Management Fund for the purpose of accumulating funds for the replacement of computers (both hardware and software) and peripherals.

Fleet Management Fund – In 1991, the City of Louisville established the Fleet Management Fund for the purpose of accumulating funds for the replacement of capital assets such as machinery, equipment, and vehicles.

**City of Louisville, Colorado
Combining Statement of Net Assets
Internal Service Funds
December 31, 2008**

	<u>Building Maintenance</u>	<u>Technology Management</u>	<u>Fleet Management</u>	<u>Total Internal Service Funds</u>
ASSETS				
Current assets:				
Cash and cash equivalents	\$ 478,394	\$ 393,759	\$ 1,404,979	\$ 2,277,132
Interest receivable	<u>1,920</u>	<u>1,135</u>	<u>8,795</u>	<u>11,850</u>
Total current assets	<u>480,314</u>	<u>394,894</u>	<u>1,413,774</u>	<u>2,288,982</u>
Noncurrent assets:				
Capital assets:				
Machinery and equipment	-	-	2,487,312	2,487,312
Office furniture and fixtures	-	791,865	-	791,865
Accumulated depreciation	<u>-</u>	<u>(689,002)</u>	<u>(1,956,811)</u>	<u>(2,645,813)</u>
Total capital assets (net of accumulated depreciation)	<u>-</u>	<u>102,863</u>	<u>530,501</u>	<u>633,364</u>
Total noncurrent assets	<u>-</u>	<u>102,863</u>	<u>530,501</u>	<u>633,364</u>
Total assets	<u>480,314</u>	<u>497,757</u>	<u>1,944,275</u>	<u>2,922,346</u>
LIABILITIES				
Current liabilities:				
Accounts payable	<u>-</u>	<u>-</u>	<u>-</u>	<u>-</u>
Total accounts payable	<u>-</u>	<u>-</u>	<u>-</u>	<u>-</u>
NET ASSETS				
Invested in capital assets	-	102,863	530,501	633,364
Unrestricted	<u>480,314</u>	<u>394,894</u>	<u>1,413,774</u>	<u>2,288,982</u>
Total net assets	<u>\$ 480,314</u>	<u>\$ 497,757</u>	<u>\$ 1,944,275</u>	<u>\$ 2,922,346</u>

See the accompanying independent auditors' report

City of Louisville, Colorado
Combining Statement of Revenues, Expenses,
and Changes in Net Assets
Internal Service Funds
For the Year Ended December 31, 2008

	<u>Building Maintenance</u>	<u>Technology Management</u>	<u>Fleet Management</u>	<u>Total Internal Service Funds</u>
Operating revenues:				
Charges for services	\$ 200,000	\$ 124,530	\$ 100,000	\$ 424,530
Miscellaneous	13,540	-	14,922	28,462
Total operating revenues	<u>213,540</u>	<u>124,530</u>	<u>114,922</u>	<u>452,992</u>
Operating expenses:				
Costs of sales and services	92,267	6,111	1,418	99,796
Depreciation	-	85,716	262,991	348,707
Total operating expenses	<u>92,267</u>	<u>91,827</u>	<u>264,409</u>	<u>448,503</u>
Operating income (loss)	<u>121,273</u>	<u>32,703</u>	<u>(149,487)</u>	<u>4,489</u>
Nonoperating revenues (expenses):				
Interest income	20,197	13,707	71,619	105,523
Income before contributions	141,470	46,410	(77,868)	110,012
Capital contributions	-	-	-	-
Change in net assets	141,470	46,410	(77,868)	110,012
Net assets, January 1	338,844	451,347	2,022,143	2,812,334
Net assets, December 31	<u>\$ 480,314</u>	<u>\$ 497,757</u>	<u>\$ 1,944,275</u>	<u>\$ 2,922,346</u>

See the accompanying independent auditors' report

City of Louisville, Colorado
Combining Statement of Cash Flows
Internal Service Funds
For the Year Ended December 31, 2008

	<u>Building Maintenance</u>	<u>Technology Management</u>	<u>Fleet Management</u>	<u>Total Internal Service Funds</u>
Cash flows from operating activities				
Receipts from customers and users	\$ 211,963	\$ 123,399	\$ 125,155	\$ 460,516
Payments to suppliers	<u>(117,038)</u>	<u>(6,111)</u>	<u>(20,690)</u>	<u>(143,839)</u>
Net cash provided by operating activities	<u>94,925</u>	<u>117,288</u>	<u>104,465</u>	<u>316,677</u>
Cash flows from noncapital and related financing activities				
Internal activity - payments received from other sources	<u>-</u>	<u>-</u>	<u>-</u>	<u>-</u>
Cash flows from capital and related financing activities				
Purchases of capital assets	<u>-</u>	<u>-</u>	<u>(226,705)</u>	<u>(226,705)</u>
Cash flows from investing activities				
Interest	<u>20,197</u>	<u>13,707</u>	<u>71,619</u>	<u>105,523</u>
Net increase (decrease) in cash and cash equivalents	115,122	130,995	(50,621)	195,495
Cash and cash equivalents, January 1	<u>363,272</u>	<u>262,764</u>	<u>1,455,600</u>	<u>2,081,636</u>
Cash and cash equivalents, December 31	<u>\$ 478,394</u>	<u>\$ 393,759</u>	<u>\$ 1,404,979</u>	<u>\$ 2,277,131</u>
Reconciliation of operating income (loss) to net cash provided by operating activities:				
Operating income (loss)	\$ 121,273	\$ 32,703	\$ (149,487)	\$ 4,489
Adjustments to reconcile operating income to net cash provided by operating activities:				
Depreciation expense	-	85,716	262,991	348,707
Change in assets and liabilities:				
Receivables	(1,577)	(1,131)	10,233	7,524
Accounts payable	<u>(24,771)</u>	<u>-</u>	<u>(19,272)</u>	<u>(44,043)</u>
Net cash provided by operating activities	<u>\$ 94,925</u>	<u>\$ 117,288</u>	<u>\$ 104,465</u>	<u>\$ 316,677</u>

**City of Louisville, Colorado
 Budgetary Comparison Schedule
 Building Maintenance Fund
 For the Year Ending December 31, 2008**

	<u>Budget</u>		<u>Actual Amounts</u>	<u>Variance with Final Budget - Positive (Negative)</u>
	<u>Original</u>	<u>Final</u>		
Revenues				
Charges for services	\$ 200,000	\$ 200,000	\$ 200,000	\$ -
Miscellaneous Income	15,000	15,000	13,540	(1,460)
Interest Income	4,000	4,000	20,197	16,197
Total revenues	<u>219,000</u>	<u>219,000</u>	<u>233,737</u>	<u>14,737</u>
Expenditures				
Cost of sales and services	<u>150,000</u>	<u>158,300</u>	<u>92,267</u>	<u>66,033</u>
Total expenditures	<u>150,000</u>	<u>158,300</u>	<u>92,267</u>	<u>66,033</u>
Net Income (Loss), Budget Basis	<u>\$ 69,000</u>	<u>\$ 60,700</u>	<u>\$ 141,470</u>	<u>\$ 80,770</u>

See the accompanying independent auditors' report

**City of Louisville, Colorado
 Budgetary Comparison Schedule
 Technology Management Fund
 For the Year Ending December 31, 2008**

	<u>Budget</u>		<u>Actual Amounts</u>	<u>Variance with Final Budget - Positive (Negative)</u>
	<u>Original</u>	<u>Final</u>		
Revenues				
Charges for services	\$ 124,531	\$ 124,531	\$ 124,530	\$ (1)
Interest income	<u>2,469</u>	<u>2,469</u>	<u>13,707</u>	<u>11,238</u>
Total revenues	<u>127,000</u>	<u>127,000</u>	<u>138,237</u>	<u>11,237</u>
Expenditures				
Capital outlay	<u>-</u>	<u>20,820</u>	<u>6,111</u>	<u>14,709</u>
Total expenditures	<u>-</u>	<u>20,820</u>	<u>6,111</u>	<u>14,709</u>
Net Income (Loss), Budget Basis	<u>\$ 127,000</u>	<u>\$ 106,180</u>	132,126	<u>\$ 25,946</u>
Reconciliation from Budget Basis Expenditures (non-GAAP) to GAAP:				
Add:				
Capitalized assets			-	
Subtract:				
Depreciation			<u>(85,716)</u>	
Change in Net Assets, December 31 GAAP Basis			<u>\$ 46,410</u>	

See the accompanying independent auditors' report

**City of Louisville, Colorado
 Budgetary Comparison Schedule
 Fleet Management Fund
 For the Year Ending December 31, 2008**

	<u>Budget</u>		<u>Actual Amounts</u>	<u>Variance with Final Budget - Positive (Negative)</u>
	<u>Original</u>	<u>Final</u>		
Revenues				
Charges for services	\$ 100,000	\$ 100,000	\$ 100,000	\$ -
Miscellaneous income	-	-	14,922	14,922
Interest income	<u>35,000</u>	<u>35,000</u>	<u>71,619</u>	<u>36,619</u>
Total revenues	<u>135,000</u>	<u>135,000</u>	<u>186,541</u>	<u>51,541</u>
Expenditures				
Capital outlay	<u>305,000</u>	<u>279,500</u>	<u>228,123</u>	<u>51,377</u>
Total expenditures	<u>305,000</u>	<u>279,500</u>	<u>228,123</u>	<u>51,377</u>
Net Income (Loss), Budget Basis	<u>\$ (170,000)</u>	<u>\$ (144,500)</u>	(41,582)	<u>\$ 102,918</u>
Reconciliation from Budget Basis Expenditures (non-GAAP) to GAAP:				
Add:				
Capitalized assets			226,705	
Capital Contributions			-	
Subtract:				
Depreciation			<u>(262,991)</u>	
Change in Net Assets, December 31 GAAP Basis			<u>\$ (77,868)</u>	

See the accompanying independent auditors' report



Statistical Section

STATISTICAL SECTION

This part of the City of Louisville’s comprehensive annual financial report presents detailed information as a context for understanding what the information in the financial statements, note disclosures, and required supplementary information says about the city’s overall financial health.

Financial Trends – These schedules contain trend information to help the reader understand how the city’s financial performance and well-being have changed over time. *Schedule 1 thru Schedule 4*

Revenue Capacity – These schedules contain information to help the reader assess the factors affecting the city’s ability to generate its property and sales taxes. *Schedule 5 thru Schedule 12*

Debt Capacity – These schedules present information to help the reader assess the affordability of the city’s current levels of outstanding debt and the city’s ability to issue additional debt in the future. *Schedule 13 thru Schedule 16*

Demographics – These schedules offer demographic and economic indicators to help the reader understand the environment within which the city’s financial activities take place and to help make comparisons over time and with other governments. *Schedule 17 thru Schedule 19*

Operating Information – These schedules contain information about the city’s operations and resources to help the reader understand how the city’s financial information relates to the services the city provides and the activities it performs. *Schedule 20 thru Schedule 21*

Sources: Unless otherwise noted, the information in these schedules is derived from the comprehensive annual financial reports for the relevant year. The city implemented GASB Statement 34 in 2001; schedules presenting government-wide information include information beginning in that year.

City of Louisville, Colorado
Net Assets by Component,
Last Seven Years
(accrual basis of accounting)

	Fiscal Year						
	<u>2002</u>	<u>2003</u>	<u>2004</u>	<u>2005</u>	<u>2006</u>	<u>2007</u>	<u>2008</u>
Governmental activities							
Invested in capital assets, net of related debt	\$ 37,377,105	\$ 43,103,895	\$ 48,712,726	\$ 60,231,165	\$ 67,285,245	\$ 77,471,252	\$ 79,066,972
Restricted	16,184,895	14,187,124	13,143,559	8,504,909	7,439,484	10,119,161	9,689,202
Unrestricted	10,900,863	12,053,757	11,510,685	9,805,201	8,373,151	11,449,467	12,428,646
Total governmental activities net assets	<u>\$ 64,462,863</u>	<u>\$ 69,344,776</u>	<u>\$ 73,366,970</u>	<u>\$ 78,541,275</u>	<u>\$ 83,097,880</u>	<u>\$ 99,039,880</u>	<u>\$ 101,184,820</u>
Business-type activities							
Invested in capital assets, net of related debt	\$ 58,396,167	\$ 59,890,140	\$ 58,590,616	\$ 59,371,078	\$ 59,309,326	\$ 59,598,864	\$ 60,205,842
Restricted	697,593	659,890	659,890	849,457	904,328	916,878	1,030,617
Unrestricted	7,231,298	6,714,438	7,586,872	7,634,139	9,195,984	11,499,311	13,442,285
Total business-type activities net assets	<u>\$ 66,325,058</u>	<u>\$ 67,264,468</u>	<u>\$ 66,837,378</u>	<u>\$ 67,854,674</u>	<u>\$ 69,409,638</u>	<u>\$ 72,015,053</u>	<u>\$ 74,678,744</u>
Primary government							
Invested in capital assets, net of related debt	\$ 95,773,272	\$ 102,994,035	\$ 107,303,342	\$ 119,602,243	\$ 126,594,571	\$ 137,070,116	\$ 139,272,814
Restricted	16,882,488	14,847,014	13,803,449	9,354,366	8,343,812	11,036,039	10,719,819
Unrestricted	18,132,161	18,768,195	19,097,557	17,439,340	17,569,135	22,948,778	25,870,931
Total primary government net assets	<u>\$ 130,787,921</u>	<u>\$ 136,609,244</u>	<u>\$ 140,204,348</u>	<u>\$ 146,395,949</u>	<u>\$ 152,507,518</u>	<u>\$ 171,054,933</u>	<u>\$ 175,863,564</u>

City of Louisville, Colorado
Change in Net Assets
Last Seven Fiscal Years
(accrual basis of accounting)

	Fiscal Year						
	<u>2002</u>	<u>2003</u>	<u>2004</u>	<u>2005</u>	<u>2006</u>	<u>2007</u>	<u>2008</u>
Expenses							
Governmental activities:							
General government	\$ 1,956,577	\$ 2,335,443	\$ 3,077,874	\$ 2,378,313	\$ 2,835,926	\$ 3,591,749	\$ 2,401,899
Finance	336,240	290,840	275,049	284,270	285,780	284,449	350,868
Police	3,225,412	3,312,506	3,486,421	3,555,925	3,661,022	3,820,474	4,055,906
Public Works	2,388,343	2,485,303	2,643,078	2,877,708	3,110,188	4,655,225	4,704,093
Planning	791,574	728,377	\$ 845,449	806,051	777,272	712,238	774,730
Library	892,843	920,086	922,011	931,615	1,047,748	1,064,353	1,269,493
Parks and recreation	3,525,909	3,823,153	3,991,436	4,049,684	3,985,487	3,632,168	4,707,323
Interest on long-term debt	253,189	119,923	352,833	388,999	366,358	298,680	304,554
Total governmental activities expenses	<u>13,370,087</u>	<u>14,015,631</u>	<u>15,594,151</u>	<u>15,272,565</u>	<u>16,069,782</u>	<u>18,059,336</u>	<u>18,568,866</u>
Business-type activities:							
Water & wastewater	\$ 4,973,637	\$ 5,293,963	5,458,361	\$ 5,490,281	\$ 5,656,769	\$ 5,489,166	\$ 6,072,983
Golf	1,934,022	1,779,663	1,759,640	1,721,051	1,839,518	2,002,573	1,947,782
Total business-type activities	<u>6,907,659</u>	<u>7,073,626</u>	<u>7,218,001</u>	<u>7,211,332</u>	<u>7,496,287</u>	<u>7,491,739</u>	<u>8,020,765</u>
Total primary government expenses	<u>\$ 20,277,746</u>	<u>\$ 21,089,257</u>	<u>\$ 22,812,152</u>	<u>\$ 22,483,897</u>	<u>\$ 23,566,069</u>	<u>\$ 25,551,075</u>	<u>\$ 26,589,631</u>
Program Revenues							
Governmental activities:							
Charges for services:							
General government	\$ 57,240	\$ 63,024	\$ 64,307	\$ 42,359	\$ 67,016	\$ 206,239	\$ 126,540
Police	152,500	143,710	147,579	167,320	187,057	130,692	137,265
Public works	-	-	106,566	131,764	195,694	878,496	387,877
Planning	484,927	638,450	723,038	684,857	496,868	701,694	600,428
Library	29,539	29,840	34,311	34,563	34,708	82,688	72,264
Parks and recreation	1,661,360	1,659,610	1,624,792	1,671,585	1,700,446	1,793,316	1,728,499
Operating grants and contributions	781,975	792,478	758,154	783,739	1,077,782	689,551	720,388
Capital grants and contributions	12,434,501	179,478	213,235	202,624	320,168	3,273,201	346,603
Total governmental activities program revenues	<u>15,602,042</u>	<u>3,506,590</u>	<u>3,671,982</u>	<u>3,718,811</u>	<u>4,079,739</u>	<u>7,755,877</u>	<u>4,119,864</u>
Business-type activities:							
Charges for services:							
Water & wastewater	\$ 3,887,667	\$ 4,997,833	\$ 4,486,572	\$ 5,257,815	\$ 6,118,479	\$ 6,179,278	\$ 6,836,012
Golf	2,031,467	1,899,107	1,851,256	1,842,664	1,904,731	1,889,647	1,921,332
Capital grants and contributions	1,682,738	981,971	244,272	1,005,669	582,828	1,409,453	1,221,728
Total business-type activities program revenues	<u>7,601,872</u>	<u>7,878,911</u>	<u>6,582,100</u>	<u>8,106,148</u>	<u>8,606,038</u>	<u>9,478,378</u>	<u>9,979,072</u>
Total primary government program revenues	<u>\$ 23,203,914</u>	<u>\$ 11,385,501</u>	<u>\$ 10,254,082</u>	<u>\$ 11,824,959</u>	<u>\$ 12,685,777</u>	<u>\$ 17,234,255</u>	<u>\$ 14,098,936</u>

	Fiscal Year						
	<u>2002</u>	<u>2003</u>	<u>2004</u>	<u>2005</u>	<u>2006</u>	<u>2007</u>	<u>2008</u>
Net(Expense)/Revenue							
Governmental activities	\$ 2,231,955	\$(10,509,041)	\$ (11,922,169)	\$ (11,553,754)	\$ (11,990,043)	\$ (10,303,459)	\$ (14,449,002)
Business-type activities	694,213	805,285	(635,901)	894,816	1,109,751	1,986,639	1,958,307
Total primary government expenses	<u>\$ 2,926,168</u>	<u>\$ (9,703,756)</u>	<u>\$ (12,558,070)</u>	<u>\$ (10,658,938)</u>	<u>\$ (10,880,292)</u>	<u>\$ (8,316,820)</u>	<u>\$ (12,490,695)</u>
General Revenues and Other Changes in Net Assets							
Governmental activities:							
Taxes:							
Property taxes	\$ 1,931,501	\$ 1,892,995	\$ 2,532,390	\$ 2,546,533	\$ 2,605,176	\$ 2,612,945	\$ 2,845,816
Sales tax	9,377,591	9,562,154	9,922,070	10,432,646	9,189,242	9,487,467	9,417,834
Use tax	1,735,532	1,540,387	1,195,430	1,109,727	1,033,177	1,392,689	1,159,510
Franchise tax	703,642	812,225	858,503	940,659	988,912	997,982	1,142,519
Other tax	183,337	425,707	493,305	503,675	528,472	550,097	541,135
General intergovernmental revenue	138,946	137,659	144,364	131,344	138,710	131,461	123,434
Investment earnings	814,273	331,527	628,297	523,386	822,472	912,032	1,203,708
Miscellaneous	383,197	624,300	110,909	476,089	254,583	97,422	95,982
Gain on sales of asset	-	-	-	-	921,904	-	-
Transfers	64,000	64,000	59,095	64,000	64,000	64,000	64,000
Total Governmental activities	<u>15,332,019</u>	<u>15,390,954</u>	<u>15,944,363</u>	<u>16,728,059</u>	<u>16,546,648</u>	<u>16,246,095</u>	<u>16,593,938</u>
Business-type activities :							
Investment earnings	\$ 453,061	\$ 198,125	\$ 267,906	\$ 186,480	\$ 509,213	\$ 682,776	\$ 769,384
Special claims and judgement expenses	-	-	-	-	-	-	-
Transfers	(64,000)	(64,000)	(59,095)	(64,000)	(64,000)	(64,000)	(64,000)
Total business-type activities	<u>389,061</u>	<u>134,125</u>	<u>208,811</u>	<u>122,480</u>	<u>445,213</u>	<u>618,776</u>	<u>705,384</u>
Total primary government	<u>\$ 15,721,080</u>	<u>\$ 15,525,079</u>	<u>\$ 16,153,174</u>	<u>\$ 16,850,539</u>	<u>\$ 16,991,861</u>	<u>\$ 16,864,871</u>	<u>\$ 17,299,322</u>
Change in Net Assets							
Governmental activities	\$ 17,563,974	\$ 4,881,913	\$ 4,022,194	\$ 5,174,305	\$ 4,556,605	\$ 5,942,636	\$ 2,144,936
Business-type activities	1,083,274	939,410	(427,090)	1,017,296	1,554,964	2,605,415	2,663,691
Total primary government	<u>\$ 18,647,248</u>	<u>\$ 5,821,323</u>	<u>\$ 3,595,104</u>	<u>\$ 6,191,601</u>	<u>\$ 6,111,569</u>	<u>\$ 8,548,051</u>	<u>\$ 4,808,627</u>

City of Louisville, Colorado
Fund Balances, Governmental Funds
Last Ten Fiscal Years
(modified accrual basis of accounting)

	Fiscal Year									
	<u>1999</u>	<u>2000</u>	<u>2001</u>	<u>2002</u>	<u>2003</u>	<u>2004</u>	<u>2005</u>	<u>2006</u>	<u>2007</u>	<u>2008</u>
General Fund										
Reserved	\$ 81,066	\$ 57,599	\$ 48,110	\$ 56,074	\$ 55,426	\$ 59,908	\$ 64,324	\$ 630,573	\$ 745,360	\$ 770,140
Unreserved	<u>2,602,946</u>	<u>2,382,563</u>	<u>2,586,845</u>	<u>2,481,211</u>	<u>3,033,684</u>	<u>2,820,289</u>	<u>3,374,861</u>	<u>3,050,120</u>	<u>4,613,436</u>	<u>3,893,555</u>
Total general fund	<u>\$ 2,684,012</u>	<u>\$ 2,440,162</u>	<u>\$ 2,634,955</u>	<u>\$ 2,537,285</u>	<u>\$ 3,089,110</u>	<u>\$ 2,880,197</u>	<u>\$ 3,439,185</u>	<u>\$ 3,680,693</u>	<u>\$ 5,358,796</u>	<u>\$ 4,663,695</u>
All Other Governmental Funds										
Reserved	\$ 2,831,910	\$ 3,252,668	\$ 2,000,970	\$ 16,357,387	\$ 14,306,376	\$ 13,633,687	\$ 8,654,909	\$ 6,983,206	\$ 9,554,650	\$ 9,236,301
Unreserved, reported in:										
Special revenue funds	476,603	4,866	556,918	836,586	937,345	668,203	1,001,822	1,471,179	2,148,344	2,219,022
Capital projects funds	<u>3,427,982</u>	<u>4,244,446</u>	<u>5,162,509</u>	<u>5,857,015</u>	<u>6,274,569</u>	<u>6,495,912</u>	<u>4,244,142</u>	<u>2,573,119</u>	<u>3,042,767</u>	<u>4,136,295</u>
Total all other governmental funds	<u>\$ 6,736,495</u>	<u>\$ 7,501,980</u>	<u>\$ 7,720,397</u>	<u>\$ 23,050,988</u>	<u>\$ 21,518,290</u>	<u>\$ 20,797,802</u>	<u>\$ 13,900,873</u>	<u>\$ 11,027,504</u>	<u>\$ 14,745,761</u>	<u>\$ 15,591,618</u>

City of Louisville, Colorado
Changes in Fund Balances, Governmental Funds,
Last Ten Fiscal Years
(modified accrual basis of accounting)

	Fiscal Year									
	1999	2000	2001	2002	2003	2004	2005	2006	2007	2008
Revenues										
Taxes (see Schedule 5)	\$ 13,470,065	\$ 14,128,617	\$ 13,941,993	\$ 13,931,604	\$ 14,233,468	\$ 15,001,698	\$ 15,533,240	\$ 14,344,979	\$ 15,041,180	\$ 15,106,814
Licenses, fees, and permits	814,335	834,386	835,749	589,227	682,674	796,104	870,857	764,715	1,488,464	1,068,193
Intergovernmental	1,228,492	1,226,713	6,472,584	13,007,359	1,061,034	1,045,239	961,157	1,097,175	4,014,245	1,169,212
Charges for services	1,521,928	1,949,294	2,047,466	1,846,146	2,106,082	1,519,939	1,884,514	1,641,451	1,537,770	1,512,980
Fines and forfeits	154,777	144,923	175,144	182,024	173,545	181,876	201,908	221,818	170,643	186,993
Miscellaneous	821,684	1,167,041	1,141,163	1,313,702	554,487	921,200	895,517	3,034,285	1,545,173	1,266,937
Total Revenues	18,011,281	19,450,974	24,614,099	30,870,062	18,811,290	19,466,056	20,347,193	21,104,423	23,797,475	20,311,129
Expenditures										
General government	2,055,059	1,795,070	2,521,409	1,827,231	2,127,458	3,044,543	2,246,009	2,646,874	2,967,282	3,567,685
Finance	228,846	233,799	242,388	303,393	284,574	271,900	280,176	281,500	284,252	348,696
Police	2,619,470	2,893,393	3,038,826	3,196,238	3,276,385	3,379,625	3,460,502	3,579,830	3,765,004	3,867,488
Public works	4,437,053	4,521,505	2,059,552	2,139,339	2,182,744	2,262,036	2,273,114	2,311,702	2,376,136	2,602,796
Planning	525,103	634,689	652,239	766,553	725,021	845,199	805,010	776,036	714,330	777,449
Library services	669,515	714,959	749,734	802,195	814,557	830,345	839,301	936,909	1,062,772	1,103,086
Parks and recreation	3,086,625	4,077,690	2,880,458	3,060,645	3,033,578	3,156,211	3,010,774	3,029,910	2,843,613	2,499,768
Capital outlay	4,865,567	3,330,959	11,338,439	2,819,612	7,107,889	12,983,861	12,963,210	9,279,334	3,504,754	4,489,557
Bond issuance costs	-	-	-	-	99,746	114,367	-	-	-	-
Debt service:										
Principal	460,000	490,000	505,000	535,000	285,000	650,000	620,000	635,000	655,000	670,000
Interest	323,215	301,275	276,845	250,935	119,923	352,833	342,893	323,189	291,973	297,847
Total Expenditures	19,270,453	18,993,339	24,264,890	15,701,141	20,056,875	27,890,920	26,840,989	23,800,284	18,465,116	20,224,372
Excess of revenues over/(under) expenditures	(1,259,172)	457,635	349,209	15,168,921	(1,245,585)	(8,424,864)	(6,493,796)	(2,695,861)	5,332,359	86,757
Other Financing Sources (Uses)										
Bonds issued	-	-	-	-	3,830,000	7,405,000	-	-	-	-
Sale of fixed assets	505,332	-	-	-	-	-	-	-	-	-
Refunding bonds issued	-	-	-	-	(4,165,223)	31,368	-	-	-	-
Payments to escrow agent	-	-	-	-	47,145	-	-	-	-	-
Bonds premium	-	-	-	-	-	-	-	-	-	-
Transfers in	1,068,925	1,117,828	784,632	433,811	315,051	309,600	590,873	89,369	96,561	1,983,933
Transfers out	(1,004,925)	(1,053,828)	(720,632)	(369,811)	(251,051)	(250,505)	(435,018)	(25,369)	(32,561)	(1,919,933)
Total other financing sources (uses)	569,332	64,000	64,000	64,000	(224,078)	7,495,463	155,855	64,000	64,000	64,000
Net change in fund balance	\$ (689,840)	\$ 521,635	\$ 413,209	\$ 15,232,921	\$ (1,469,663)	\$ (929,401)	\$ (6,337,941)	\$ (2,631,861)	\$ 5,396,359	\$ 150,757
Debt service as a percentage of noncapital expenditures	6%	5%	6%	6%	3%	7%	7%	7%	7%	7%

City of Louisville, Colorado
Tax Revenues by Source, Governmental Funds
Last Ten Fiscal Years
(modified accrual basis of accounting)

Fiscal Year	Property Tax	Sales Tax	Use Tax	Franchise Tax	Lodging Tax	Other Tax	Total
1999	1,275,959	9,353,478	2,048,769	676,512	-	115,347	13,470,065
2000	1,348,875	9,876,434	2,064,459	712,555	-	126,294	14,128,617
2001	1,458,094	9,674,604	1,890,482	777,529	-	141,284	13,941,993
2002	1,931,501	9,377,591	1,735,533	703,642	-	183,337	13,931,604
2003	1,892,995	9,562,154	1,540,387	812,225	254,905	170,802	14,233,468
2004	2,532,390	9,922,070	1,195,430	858,503	277,029	216,276	15,001,698
2005	2,546,533	10,432,646	1,109,727	940,659	297,122	206,553	15,533,240
2006	2,605,176	9,189,242	1,033,177	988,912	329,954	198,518	14,344,979
2007	2,612,945	9,487,467	1,392,689	997,982	356,701	193,396	15,041,180
2008	2,845,816	9,417,834	1,159,510	1,142,519	369,019	172,116	15,106,814
Change							
1999-2008	123.03%	0.69%	-43.40%	68.88%		49.22%	12.15%

City of Louisville, Colorado
Assessed Value and Estimated Actual Value of Taxable Property
Last Ten Fiscal Years

Fiscal Year	Assesed Commercial Property	Assesed Residential Property	Assesed Industrial Property	Assesed Other Property	Less: Assesed Tax-Exempt Property	Total Taxable Assesed Value	Total Direct Tax Rate
1999	105,902,920	128,212,060	52,665,900	6,090,400	4,292,340	292,871,280	5.246
2000	120,731,767	129,696,740	58,961,263	6,870,650	4,081,530	316,260,420	5.184
2001	137,895,140	155,521,170	69,477,800	7,240,970	4,617,020	370,135,080	4.643
2002	125,523,152	155,893,817	72,554,204	16,850,536	20,344,772	370,821,709	4.767
2003	127,259,399	162,513,590	75,061,730	17,719,485	21,372,560	382,554,204	5.292
2004	131,149,472	163,269,580	77,369,050	15,054,055	25,192,640	386,842,157	5.184
2005	137,015,460	167,946,830	72,939,990	14,813,515	40,465,620	392,715,795	6.710
2006	123,755,980	169,250,290	86,315,640	15,065,590	40,587,330	394,387,500	6.710
2007	137,832,080	182,113,910	87,164,810	16,396,625	42,906,540	423,507,425	6.710
2008	137,287,590	183,113,180	90,622,040	15,843,260	46,629,180	426,866,070	6.710

Fiscal Year	Actual Commercial Property	Actual Residential Property	Actual Industrial Property	Actual Other Property	Less: Actual Tax-Exempt Property	Total Taxable Actual Value
1999	365,181,038	1,316,202,100	181,605,924	21,503,750	16,280,600	1,884,492,812
2000	416,315,273	1,333,420,400	203,314,189	24,589,120	14,265,200	1,977,638,982
2001	476,329,365	1,699,564,800	239,578,359	25,987,920	17,181,300	2,441,460,444
2002	432,838,223	1,703,546,469	250,186,726	58,104,231	70,153,582	2,444,675,649
2003	438,823,500	2,041,527,500	258,833,300	61,101,170	73,697,595	2,800,285,470
2004	452,237,900	2,051,023,900	266,789,700	51,909,910	86,869,295	2,821,961,410
2005	472,465,000	2,109,644,400	251,516,900	51,080,965	139,535,895	2,884,707,265
2006	426,742,300	2,126,160,300	297,639,700	51,950,600	139,959,695	2,902,492,900
2007	475,280,800	2,287,757,100	300,567,800	56,539,600	161,219,395	3,120,145,300
2008	473,403,050	2,300,345,600	312,489,200	54,629,800	175,040,095	3,140,867,650

Source: Boulder County Assessor's Office

**City of Louisville, Colorado
Property Tax Rates and Tax Levies
Direct and Overlapping Governments
Last Ten Fiscal Years**

Mill Levies

Levy Year	Collection Year	City of Louisville (2)	Boulder Valley Schools	Boulder County	Urban Drainage and Flood Control District	Louisville Fire District (1)	Northern Colorado Water	Total
1998	1999	5.246	45.344	21.243	0.668	3.186	1.000	76.687
1999	2000	5.184	50.356	21.762	0.676	3.186	1.000	82.164
2000	2001	4.643	44.000	19.682	0.583	3.186	1.000	73.094
2001	2002	4.767	42.890	19.835	0.594	3.186	1.000	72.272
2002	2003	5.292	34.807	17.621	0.521	3.186	1.000	62.427
2003	2004	5.184	38.524	20.087	0.531	3.186	1.000	68.512
2004	2005	6.710	38.255	20.088	0.533	3.186	1.000	69.772
2005	2006	6.710	37.423	21.267	0.538	3.186	1.000	70.124
2006	2007	6.710	39.564	22.467	0.542	6.686	1.000	76.969
2007	2008	6.710	37.865	22.467	0.507	6.686	1.000	75.235

Tax Levies

Levy Year	Collection Year	City of Louisville (2)	Boulder Valley Schools	Boulder County	Urban Drainage and Flood Control District	Louisville Fire District (1)	Northern Colorado Water	Total
1998	1999	1,294,130	119,611,856	68,872,207	1,566,930	834,506	2,701,647	194,881,276
1999	2000	1,359,803	122,176,389	72,751,467	1,577,962	984,488	3,136,775	201,986,884
2000	2001	1,507,615	126,008,817	78,053,932	1,706,603	1,062,242	3,330,459	211,669,668
2001	2002	1,958,759	111,929,873	78,183,325	1,642,246	1,242,877	3,679,989	198,637,069
2002	2003	1,922,340	125,399,588	90,859,290	1,695,961	1,236,363	3,762,094	224,875,636
2003	2004	2,566,939	127,737,793	94,356,356	1,746,793	1,275,228	4,035,582	231,718,691
2004	2005	2,595,711	125,759,422	100,896,978	1,777,428	1,283,405	4,352,070	236,665,014
2005	2006	2,635,123	133,570,367	108,354,720	1,855,614	1,299,537	4,538,972	252,254,333
2006	2007	2,646,340	140,792,830	112,630,364	1,902,890	2,742,042	4,593,229	265,307,695
2007	2008	2,840,053	150,815,108	124,745,065	1,993,702	2,930,608	5,062,766	288,387,302

Notes: (1) The Fire District passed a tax levy increase in 2005.

(2) The City of Louisville passed a tax levy increase in 2003 for the new library building debt service.

Source: Boulder County Assessor's Office (Summary of Levies)

**City of Louisville, Colorado
Principal Property Tax Payers
Current Year and Ten Years Ago**

Taxpayer	Type of Business	1999 Assessed Valuation	Rank	Percentage of Total Assessed Valuation
Storage Technology Corporation	Electronic Manufacturing	\$ 43,190,690	1	14.5%
Neoserv Co	Business Services	5,822,820	2	2.0%
Mke-Quantum Components	Electronic Manufacturing	5,181,940	3	1.7%
Quantum Peripherals	Electronic Manufacturing	4,255,690	4	1.4%
Mack Cali Realty LP	Retail	3,563,870	5	1.2%
Bank of New York	Retail	2,994,250	6	1.0%
Lou Court LLC	Business Services	2,714,400	7	0.9%
Centrobe	Electronic Manufacturing	2,446,990	8	0.8%
Eagle Hardware & Garden	Retail	2,353,440	9	0.8%
Somerset Limited Partnership	Retail	2,237,550	10	0.8%
	Totals	\$ 74,761,640		25.2%

Taxpayer	Type of Business	2008 Assessed Valuation	Rank	Percentage of Total Assessed Valuation
Sun Microsystems, Inc	Electronic Manufacturing	\$ 12,211,670	1	2.6%
Conoco Phillips Company	Energy Training and R&D Center	9,888,060	2	2.1%
Neodata Services Inc.	Business Services	5,623,680	3	1.2%
MEPT Coal Creek Business Park	Office Park	7,647,250	4	1.6%
Infinite Funding Company LLC	Commercial Real Estate	4,579,680	5	1.0%
NEXCORE/RREEF Avista II LLC	Medical Offices	3,868,890	6	0.8%
Eagle Hardware & Garden Inc	Retail	2,853,920	7	0.6%
Piedra Properties LLP	Property Management	2,812,880	8	0.6%
Lexington Louisville LP	Unknown	2,804,910	9	0.6%
Westcore Vasona Centennial LLP	Commerical Real Estate	2,722,610	10	0.6%
	Totals	\$ 55,013,550		11.6%

Source: Boulder County Assessor's Office

**City of Louisville, Colorado
Property Tax Levies and Collections
Last Ten Fiscal Years**

<u>Levy Year</u>	<u>Collection Year</u>	<u>Total Tax Levy</u>	<u>Current Tax Collections (1)</u>	<u>Percent of Current Tax Collected</u>	<u>Delinquent Tax Collections (1)</u>	<u>Total Tax Collections (1)</u>	<u>Ratio of Total Tax Collections to Total Tax Levy (2)</u>
1998	1999	1,294,130	1,289,398	99.63%	6	1,289,404	99.63%
1999	2000	1,359,803	1,353,621	99.55%	8,567	1,362,188	100.18%
2000	2001	1,507,615	1,486,975	98.63%	13,768	1,500,743	99.54%
2001	2002	1,958,759	1,935,487	98.81%	1,620	1,937,107	98.89%
2002	2003	1,922,340	1,892,995	98.47%	213	1,893,208	98.48%
2003	2004	2,566,939	2,532,390	98.65%	1,190	2,533,580	98.70%
2004	2005	2,595,711	2,546,533	98.11%	2,547	2,549,080	98.20%
2005	2006	2,635,123	2,605,175	98.86%	2,605	2,607,780	98.96%
2006	2007	2,646,340	2,612,945	98.74%	7,463	2,620,408	99.02%
2007	2008	2,840,053	2,845,816	100.20%	11,819	2,857,635	100.62%

Notes:

- (1) The Boulder County Treasurer's collection fees have not been deducted from these amounts.
- (2) Includes the amount collected as delinquent taxes with the interest and penalties thereon, and therefore may result in total collections of more than 100% of taxes levied.

City of Louisville, Colorado
Taxes Collected by Category
Last Ten Fiscal Years

	Fiscal Year									
	<u>1999</u>	<u>2000</u>	<u>2001</u>	<u>2002</u>	<u>2003</u>	<u>2004</u>	<u>2005</u>	<u>2006</u>	<u>2007</u>	<u>2008</u>
Agriculture	996	3,615	3,692	4,146	4,105	11,418	11,126	9,864	10,288	14,692
Mining	381	11,144	1,393	-	-	-	-	-	-	-
Construction	7,338	12,399	7,445	30,220	28,819	31,506	35,048	23,958	28,251	23,760
Manufacturing	200,633	120,323	96,263	85,661	71,504	91,997	451,986	108,794	166,047	109,387
Trans/Comm/Utilities	761,290	882,491	1,092,226	1,074,307	1,232,536	1,272,749	1,449,739	1,472,573	1,525,889	1,611,432
Wholesale	40,781	47,428	60,937	14,431	35,333	44,598	63,981	108,836	143,823	165,215
Home Improvements Centers	2,116,740	2,091,336	1,765,676	1,863,021	1,939,912	2,064,371	2,010,061	1,336,629	1,259,846	1,163,491
General Merchandise	1,722,562	2,019,070	2,450,886	2,294,414	2,203,006	2,406,894	2,407,114	1,872,976	1,969,137	1,863,152
Grocery Stores	2,188,496	1,883,222	1,892,069	1,957,632	1,947,215	1,764,012	1,634,397	1,601,653	1,658,008	1,708,054
Automotive	18,421	15,107	132,113	148,890	163,158	189,245	188,766	115,704	142,765	90,709
Apparel/Accessory	2,248	8,839	19,011	6,207	2,994	1,605	1,672	15,054	15,471	21,067
Furniture	125,151	76,739	41,485	34,808	40,209	42,830	56,786	80,320	105,467	129,802
Eating/Drinking	1,019,773	1,232,386	1,241,925	1,194,008	1,195,952	1,291,388	1,252,591	1,162,927	1,199,902	1,232,279
Miscellaneous	572,462	600,880	211,641	78,212	92,535	101,528	64,799	530,644	398,081	311,289
Financial/Insurance	2,083	5,237	69,558	75,682	94,215	83,711	124,017	165,818	194,936	238,279
Services	883,882	1,071,588	598,219	509,072	481,665	536,715	680,988	583,492	576,696	676,867

**City of Louisville, Colorado
Direct and Overlapping Sales Tax Rates,
Last Ten Fiscal Years**

<u>Fiscal Year</u>	<u>City of Louisville</u>	<u>County of Boulder</u>	<u>State of Colorado</u>	<u>Regional Transportation District</u>	<u>Cultural District</u>	<u>Football District</u>	<u>Baseball District</u>	<u>Total</u>
1999	3.375%	0.40%	3.00%	0.60%	0.10%	-	0.10%	7.575%
2000	3.375%	0.40%	3.00%	0.60%	0.10%	-	0.10%	7.575%
2001	3.375%	0.40%	2.90%	0.60%	0.10%	0.10%	-	7.475%
2002	3.375%	0.45%	2.90%	0.60%	0.10%	0.10%	-	7.525%
2003	3.375%	0.55%	2.90%	0.60%	0.10%	0.10%	-	7.625%
2004	3.375%	0.55%	2.90%	0.60%	0.10%	0.10%	-	7.625%
2005	3.375%	0.65%	2.90%	1.00%	0.10%	0.10%	-	8.125%
2006	3.375%	0.65%	2.90%	1.00%	0.10%	0.10%	-	8.125%
2007	3.375%	0.65%	2.90%	1.00%	0.10%	0.10%	-	8.125%
2008	3.375%	0.65%	2.90%	1.00%	0.10%	0.10%	-	8.125%

Notes: Boulder County sales tax rate changed from .45 to .55 on July 1, 2002

City of Louisville
Sales Tax Revenue Payers by Industry
Current Year and Nine Years Ago

Taxpayer	Fiscal Year 1999				Fiscal Year 2008			
	Number of Filers (1)	Percent of Total	Sales Tax Revenue	Percentage of Total	Number of Filers	Percent of Total	Sales Tax Revenue	Percent of Total
Agriculture	N/A	N/A	\$ 996	0.0%	14	0.9%	\$ 14,692	0.2%
Mining	N/A	N/A	381	0.0%	-	0.0%	-	0.0%
Construction	N/A	N/A	7,338	0.1%	57	3.6%	23,760	0.3%
Manufacturing	N/A	N/A	200,633	2.1%	118	7.4%	109,387	1.2%
Trans/Comm/Utilities	N/A	N/A	761,290	7.9%	142	8.9%	1,611,432	17.2%
Wholesale	N/A	N/A	40,781	0.4%	94	5.9%	165,215	1.8%
Home Improvements Centers	N/A	N/A	2,116,740	21.9%	55	3.5%	1,163,491	12.4%
General Merchandise	N/A	N/A	1,722,562	17.8%	59	3.7%	1,863,152	19.9%
Grocery Stores	N/A	N/A	2,188,496	22.6%	44	2.8%	1,708,054	18.2%
Automotive	N/A	N/A	18,421	0.2%	9	0.6%	90,709	1.0%
Apparel/Accessory	N/A	N/A	2,248	0.0%	20	1.3%	21,067	0.2%
Furniture	N/A	N/A	125,151	1.3%	31	1.9%	129,802	1.4%
Eating/Drinking	N/A	N/A	1,019,773	10.6%	76	4.8%	1,232,279	13.2%
Miscellaneous	N/A	N/A	572,462	5.9%	241	15.1%	311,289	3.3%
Financial/Insurance	N/A	N/A	2,083	0.0%	176	11.0%	238,279	2.5%
Services	N/A	N/A	883,882	9.1%	457	28.7%	676,867	7.2%
			<u>\$ 9,663,237</u>	<u>100%</u>	<u>1,593</u>	<u>100%</u>	<u>\$ 9,359,475</u>	<u>100%</u>

Notes:

(1) Number of filers was not available for year 1999. Also due to confidentiality issues, the names of the ten largest revenue payers are not available. The categories presented are intended to provide alternative information regarding the sources of the City's revenue.

City of Louisville, Colorado
Ratios of Outstanding Debt by Type
Last Ten Fiscal Years

Fiscal Year	Governmental Activities		Business-type Activities			Total Primary Government	Ratio of G.O. Bonds to Actual Property Value	Net G.O. Bonds Per Capita	Ratio of Total Debt to Total Personal Income
	General Obligation Bonds	Sales Tax Refunding Revenue Bonds	General Obligation Bonds	Water Notes Payable	Windy Lease Payments				
1999	\$ 1,035,000	\$ 4,805,000	\$ 3,244,763	\$ -	\$ 638,149	\$ 9,722,912	0.23%	\$ 237	0.09%
2000	795,000	4,555,000	2,920,418	-	618,760	8,889,178	0.19	196	0.08
2001	550,000	4,295,000	2,576,072	-	643,407	8,064,479	0.13	165	0.07
2002	285,000	4,025,000	2,223,654	-	618,594	7,152,248	0.10	133	0.06
2003	-	3,830,000	2,020,000	18,211,667	592,344	24,654,011	0.07	107	0.21
2004	7,085,000	3,500,000	1,820,000	17,327,500	564,563	30,297,063	0.32	470	0.25
2005	6,820,000	3,145,000	1,615,000	16,408,333	535,188	28,523,521	0.29	440	0.22
2006	6,545,000	2,785,000	1,405,000	15,453,333	504,000	26,692,333	0.27	410	0.19
2007	6,260,000	2,415,000	1,190,000	14,458,333	470,812	24,794,145	0.24	382	0.17
2008	5,965,000	2,040,000	970,000	13,422,500	435,562	22,833,062	0.22	356	N/A

Notes:

In 2003, the City incurred new debt for the purchase of water rights.

In 2004, the City incurred new debt for the new library building.

City of Louisville, Colorado
Computation of Direct and Overlapping Bonded Debt
As of December 31, 2008

<u>Jurisdiction [1]</u>	<u>Net General Obligation Bonded Debt Outstanding</u>	<u>Percentage Applicable to Government</u>	<u>Amount Applicable to Government</u>
Direct:			
City of Louisville	\$ 5,965,000	100.00%	\$ 5,965,000
Overlapping:			
Boulder Valley School District No. RE-2	220,600,000	9.22%	20,339,320
Colorado Tech Center Metropolitan District	13,795,000	100.00%	13,795,000
Northern Colorado Water Conservancy District	<u>4,234,399</u>	3.17%	<u>134,230</u>
Total	<u>\$ 244,594,399</u>		<u>\$ 40,233,550</u>

Notes:

- (1) The following entities also overlap the City but have no general obligation debt outstanding:
Louisville Fire District, Boulder County, and Urban Drainage and Flood Control District.

Sources: Individual taxing entities

City of Louisville, Colorado
Computation of Legal Debt Margin
Last Ten Fiscal Years

	Fiscal Year									
	<u>1999</u>	<u>2000</u>	<u>2001</u>	<u>2002</u>	<u>2003</u>	<u>2004</u>	<u>2005</u>	<u>2006</u>	<u>2007</u>	<u>2008</u>
Total estimated actual value	1,884,492,812	1,977,638,982	2,441,460,444	2,444,675,649	2,800,285,470	2,821,961,410	2,884,707,265	2,902,492,900	3,120,145,300	3,140,867,650
Debt limit: 3% of actual value	56,534,784	59,329,169	73,243,813	73,340,269	84,008,564	84,658,842	86,541,218	87,074,787	93,604,359	94,226,030
Total net amount of debt applicable to debt limit	3,250,000	2,925,000	2,580,000	2,215,000	2,020,000	8,905,000	8,435,000	7,950,000	7,450,000	6,935,000
Legal debt margin	53,284,784	56,404,169	70,663,813	71,125,269	81,988,564	75,753,842	78,106,218	79,124,787	86,154,359	87,291,030
Total net debt applicable to the limit as a percentage of debt limit	5.75%	4.93%	3.52%	3.02%	2.40%	10.52%	9.75%	9.13%	7.96%	7.36%

**City of Louisville, Colorado
Pledged-Revenue Coverage,
Last Ten Fiscal Years**

Fiscal Year	Water Revenue Bonds						Total	Coverage
	Utility Service Charges (1)	Less: Operating Expenses (2)	Net Available Revenue	Debt Service				
				Principal	Interest			
1999	4,389,668	1,758,814	2,630,854	353,333	332,256	685,589	3.84	
2000	5,408,979	1,973,829	3,435,150	357,201	462,978	820,179	4.19	
2001	4,409,298	2,120,658	2,288,640	379,199	440,301	819,500	2.79	
2002	3,629,917	2,292,252	1,337,665	398,872	417,434	816,306	1.64	
2003	5,979,805	3,176,718	2,803,087	389,583	568,161	957,744	2.93	
2004 (3)	4,740,480	3,340,860	1,399,620	911,948	789,198	1,701,146	0.82	
2005	6,263,484	3,351,083	2,912,401	948,542	700,527	1,649,069	1.77	
2006	6,701,307	3,538,452	3,162,855	986,188	660,287	1,646,475	1.92	
2007	8,271,507	3,517,303	4,754,204	1,028,188	616,359	1,644,547	2.89	
2008	8,827,124	4,081,622	4,745,502	1,071,083	577,671	1,648,754	2.88	

Notes:

- (1) Gross revenues include all operating revenues. Also included is the portion of tap fees which are classified as capital contributions.
- (2) Total operating expenses exclusive of depreciation
- (3) Debt coverage slipped in 2004 due to excessive and unusual rains during the summer resulting in lower than expected charges for services. In addition, the City took on \$12 million in water bond debt.

**City of Louisville, Colorado
Principal Employers,
Current Year and Nine Years Ago**

Company	1999		
	Estimated Number of Employees	Rank	Percentage of Total City Employment (1)
Avista Hospital	350	4	N/A
Boulder Valley School District	275	6	N/A
Centrobe an E.D.S Company	3,000	2	N/A
City of Louisville	350	5	N/A
Confi-Dental Products, Inc	60	9	N/A
Sam's Club	169	7	N/A
McKasson HBO	160	8	N/A
Cable Labs, Inc.	55	10	N/A
Ohmeda Medical Systems	350	3	N/A
Storage Technology Corporation	3,300	1	N/A

Company	2008		
	Estimated Number of Employees	Rank	Percentage of Total City Employment (1)
Avista Adventist Hospital	600	1	5.18%
Balfour Senior care	300	5	2.59%
City of Louisville	326	3	2.82%
Transfirst	510	2	4.41%
Gaiam	234	8	2.02%
Global Health	235	7	2.03%
Inovonics	180	9	1.55%
Lockheed Martin Coherent Tech	305	4	2.63%
Medtronic	250	6	2.16%
Sam's Club	140	10	1.21%

Source: City of Louisville Chamber of Commerce.

(1) Total City Employment not available for 1999 or 2008. Percentages of Total City Employment for 2008 estimated using Total City Employment for 2007.

**City of Louisville, Colorado
Demographic and Economic Statistics,
Last Ten Fiscal Years**

Fiscal Year	Population (1)	Personal Income (thousands of dollars) (2)	Per Capita Personal Income (2)	Median Age (1)	School Enrollment (3)	Unemployment Rate (4)
1999	18,062	10,304,130	36,041	32	26,849	2.7
2000	18,937	11,825,466	40,309	36	27,531	2.4
2001	18,931	12,085,925	40,218	36	27,953	4.7
2002	18,922	11,274,957	40,292	36	28,028	5.4
2003	18,897	11,684,857	40,759	36	28,292	4.7
2004	18,959	12,038,153	42,833	36	27,918	5.0
2005	19,187	13,189,768	46,753	36	27,924	4.5
2006	19,379	13,978,420	49,038	36	28,168	3.7
2007	19,488	14,841,031	51,388	36	28,471	3.3
2008	19,488	-	-	36	28,659	5.1

Notes:

(1) Bureau of the Census / DRCOG estimates. DRCOG reviewing methodology of generating estimates and is not releasing 2008 estimates yet. 2007 estimates will be used for 2008.

(2) Bureau of Economic Analysis for Boulder County for Boulder County.

(3) Boulder Valley School District Enrollment Count.

(4) Colorado Department of Labor and Employment for Boulder County.

City of Louisville, Colorado
Full-time City Government Employees by Function/Program
Last Ten Fiscal Years

Function/Program	Fiscal Year									
	<u>1999</u>	<u>2000</u>	<u>2001</u>	<u>2002</u>	<u>2003</u>	<u>2004</u>	<u>2005</u>	<u>2006</u>	<u>2007</u>	<u>2008</u>
	Full-Time	Full-Time	Full-Time	Full-Time	Full-Time	Full-Time	Full-Time	Full-Time	Full-Time	Full-Time
General Government										
City Management	4	4	4	4	4	4	4	4	3	3
City Clerk	0 (1)	0 (1)	0 (1)	0 (1)	3	3	3	3	3	2
Human Resources	2	2	0 (3)	0 (3)	3	3	2	3	3	3
Finance and IT	10	10	12	15	9	9	9	9	8	9
Police	37	38	38	38	31	38	38	38	38	38
Public Works	41	41	41	41	42	42	42	42	42	45
Planning	8	8	8	8	8	8	8	8	8	9
Library	7	7	8	9	9	8	8	8	10	9
Recreation & Senior Services	23	24	25	25	15	15	14	14	13	11
Land Management	(2)	(2)	(2)	(2)	11	13	13	14	14	14
Total Full-Time Employees	<u>132</u>	<u>134</u>	<u>136</u>	<u>140</u>	<u>135</u>	<u>143</u>	<u>141</u>	<u>143</u>	<u>142</u>	<u>143</u>

Source:

Annual Budget reports.

Notes:

(1) City Clerk included in Finance and IT.

(2) Land Management was included with Recreation & Senior Servies.

(3) Human Resources included with Finance and IT.

City of Louisville, Colorado
Operating Indicators by Function/Program
Last Ten Fiscal Years

Function/Program	Fiscal Year									
	<u>1999</u>	<u>2000</u>	<u>2001</u>	<u>2002</u>	<u>2003</u>	<u>2004</u>	<u>2005</u>	<u>2006</u>	<u>2007</u>	<u>2008</u>
General Government										
Building permits issued	1,021	944	821	909	1,033	3,469	2,210	889	924	869
Building inspections concluded	8,591	8,813	5,479	5,519	5,500	6,343	5,332	4,117	3,857	4,275
Police										
Physical arrests	869	719	766	453	407	310	367	317	279	446
Parking violations	740	643	405	156	113	144	116	263	198	178
Traffic violations	7,033	6,188	5,558	1,812	1,487	1,431	1,737	1,798	1,166	1,399
Other public works										
Street sweeping - miles per year	7,593	7,820	4,216	5,629	5,710	6,585	5,095	4,834	5,761	3,791
Potholes repaired	1,417	761	1,218	801	806	1,059	786	512	4,725	1,384
Snow and Ice - miles per year cleared	9,956	9,215	19,399	13,897	15,048	14,288	13,749	17,841	16,090	10,096
Square feet of buildings to maintain	41,268	42,918	44,178	44,178	44,178	44,178	44,170	38,516	38,516	38,516
Parks and Recreation										
Attendance	259,220	231,005	224,465	243,915	209,383	214,860	203,745	196,743	209,615	230,832
Athletic field permits issued	not avail	6	10	5	10	11	9	8	23	25
Library										
Volumes in collection	53,000	54,000	54,000	54,000	54,000	54,000	64,000	64,000	72,178	80,785
Water										
New connections	75	46	34	22	39	8	17	5	6	18
Water main breaks	11	6	6	8	8	6	5	10	5	6
Average daily consumption	3,825,526	4,250,834	4,093,867	3,001,065	3,315,119	2,883,022	3,417,234	3,780,421	3,589,147	3,775,740
Peak daily consumption	9,446,000	9,661,000	9,316,000	6,497,000	8,746,000	6,743,000	8,704,000	8,319,000	8,305,000	9,518,000
Wastewater										
Average daily sewage treatment	2.2 MGD	2.0 MGD	2.05 MGD	1.817 MGD	1.859 MGD	1.859 MGD	1.859 MGD	1.859 MGD	1.815 MGD	1.7 MGD

**City of Louisville, Colorado
Capital Asset Statistics by Function/Program
Last Ten Fiscal Years**

Function/Program	Fiscal Year									
	<u>1999</u>	<u>2000</u>	<u>2001</u>	<u>2002</u>	<u>2003</u>	<u>2004</u>	<u>2005</u>	<u>2006</u>	<u>2007</u>	<u>2008</u>
Police										
Stations	1	1	1	1	1	1	1	1	1	1
Patrol Units	14	15	17	17	17	15	17	16	17	17
Public Works										
Streets and Highways (miles)	82	86	86	86	86	86	86	86	86	86
Parks and recreation										
Parks Acreage	110	125	150	160	160	160	160	178	178.11	178.11
Acres of Open space owned by the City and jointly	1500	1707	1753	2000	2000	2000	2000	2000	2000	2000
Playgrounds	12	12	12	12	12	12	12	13	13	13
Baseball/softball diamonds	15	11	11	11	11	11	11	11	11	11
Soccer/football fields	9	6	6	6	6	13	13	13	14	14
Community centers	2	2	2	2	2	2	2	2	2	2
Water										
Water mains (miles)	110	110	114	115	115	115	115	127	127	127
Fire hydrants	920	920	950	1000	1000	1000	1118			
Storage capacity	8 MGD	8 MGD	8 MGD	8 MGD	8 MGD	8 MGD	8 MGD	8 MGD	8 MGD	8 MGD
Treatment capacity	13 MGD	13 MGD	13 MGD	13 MGD	13 MGD	13 MGD	13 MGD	13 MGD	13 MGD	13 MGD
Wastewater										
Sanitary sewers (miles)	80	80	82	83	83	87	87	87	87	87
Storm sewers (miles)									51	51
Treatment capacity (thousand of gallons)	2.6 MGD	3.4 MGD	3.4 MGD	3.4 MGD	3.4 MGD	3.4 MGD	3.4 MGD	3.4 MGD	3.4 MGD	3.4 MGD

The public report burden for this information collection is estimated to average 380 hours annually.

LOCAL HIGHWAY FINANCE REPORT

City or County:
City of Louisville
YEAR ENDING :
December 2008

This Information From The Records of the City of Louisville

Prepared By: Lance Hillis
Phone: 303-335-4508

I. DISPOSITION OF HIGHWAY-USER REVENUES AVAILABLE FOR LOCAL GOVERNMENT EXPENDITURE

ITEM	A. Local Motor-Fuel Taxes	B. Local Motor-Vehicle Taxes	C. Receipts from State Highway-User Taxes	D. Receipts from Federal Highway Administration
1. Total receipts available				
2. Minus amount used for collection expenses				
3. Minus amount used for nonhighway purposes				
4. Minus amount used for mass transit				
5. Remainder used for highway purposes				

II. RECEIPTS FOR ROAD AND STREET PURPOSES

III. DISBURSEMENTS FOR ROAD AND STREET PURPOSES

ITEM	AMOUNT	ITEM	AMOUNT
A. Receipts from local sources:		A. Local highway disbursements:	
1. Local highway-user taxes		1. Capital outlay (from page 2)	1,396,454
a. Motor Fuel (from Item I.A.5.)		2. Maintenance:	929,280
b. Motor Vehicle (from Item I.B.5.)		3. Road and street services:	
c. Total (a.+b.)		a. Traffic control operations	50,264
2. General fund appropriations	1,590,256	b. Snow and ice removal	99,811
3. Other local imposts (from page 2)	1,568,569	c. Other	0
4. Miscellaneous local receipts (from page 2)	175,641	d. Total (a. through c.)	150,075
5. Transfers from toll facilities		4. General administration & miscellaneous	144,881
6. Proceeds of sale of bonds and notes:		5. Highway law enforcement and safety	1,265,246
a. Bonds - Original Issues		6. Total (1 through 5)	3,885,936
b. Bonds - Refunding Issues		B. Debt service on local obligations:	
c. Notes		1. Bonds:	
d. Total (a. + b. + c.)	0	a. Interest	
7. Total (1 through 6)	3,334,466	b. Redemption	
B. Private Contributions		c. Total (a. + b.)	0
C. Receipts from State government (from page 2)		2. Notes:	
	551,470	a. Interest	
D. Receipts from Federal Government (from page 2)		b. Redemption	
	0	c. Total (a. + b.)	0
E. Total receipts (A.7 + B + C + D)		3. Total (1.c + 2.c)	0
	3,885,936	C. Payments to State for highways	
		D. Payments to toll facilities	
		E. Total disbursements (A.6 + B.3 + C + D)	
			3,885,936

IV. LOCAL HIGHWAY DEBT STATUS

(Show all entries at par)

	Opening Debt	Amount Issued	Redemptions	Closing Debt
A. Bonds (Total)				0
1. Bonds (Refunding Portion)				
B. Notes (Total)				0

V. LOCAL ROAD AND STREET FUND BALANCE

	A. Beginning Balance	B. Total Receipts	C. Total Disbursements	D. Ending Balance	E. Reconciliation
	0	3,885,936	3,885,936	0	0

Notes and Comments:

LOCAL HIGHWAY FINANCE REPORT		STATE:	City of
		Colorado	Louisville
		YEAR ENDING (mm/yy):	
		December 2008	
II. RECEIPTS FOR ROAD AND STREET PURPOSES - DETAIL			
ITEM	AMOUNT	ITEM	AMOUNT
A.3. Other local imposts:		A.4. Miscellaneous local receipts:	
a. Property Taxes and Assessments		a. Interest on investments	
b. Other local imposts:		b. Traffic Fines & Penalties	136,370
1. Sales Taxes	1,396,453	c. Parking Garage Fees	
2. Infrastructure & Impact Fees		d. Parking Meter Fees	
3. Liens		e. Sale of Surplus Property	
4. Licenses		f. Charges for Services	
5. Specific Ownership &/or Other	172,116	g. Other Misc. Receipts	
6. Total (1. through 5.)	1,568,569	h. Other	39,271
c. Total (a. + b.)	1,568,569	i. Total (a. through h.)	175,641
	(Carry forward to page 1)		(Carry forward to page 1)
ITEM	AMOUNT	ITEM	AMOUNT
C. Receipts from State Government		D. Receipts from Federal Government	
1. Highway-user taxes	487,831	1. FHWA (from Item I.D.5.)	
2. State general funds		2. Other Federal agencies:	
3. Other State funds:		a. Forest Service	
a. State bond proceeds		b. FEMA	
b. Project Match		c. HUD	
c. Motor Vehicle Registrations	63,639	d. Federal Transit Admin	
d. Other (Specify)		e. U.S. Corps of Engineers	
e. Other (Specify)		f. Other Federal	
f. Total (a. through e.)	63,639	g. Total (a. through f.)	0
4. Total (1. + 2. + 3.f)	551,470	3. Total (1. + 2.g)	
			(Carry forward to page 1)
III. DISBURSEMENTS FOR ROAD AND STREET PURPOSES - DETAIL			
	ON NATIONAL HIGHWAY SYSTEM (a)	OFF NATIONAL HIGHWAY SYSTEM (b)	TOTAL (c)
A.1. Capital outlay:			
a. Right-Of-Way Costs			0
b. Engineering Costs	365,238		365,238
c. Construction:			
(1). New Facilities			0
(2). Capacity Improvements			0
(3). System Preservation	1,031,216		1,031,216
(4). System Enhancement & Operation			0
(5). Total Construction (1) + (2) + (3) + (4)	1,031,216	0	1,031,216
d. Total Capital Outlay (Lines 1.a. + 1.b. + 1.c.5)	1,396,454	0	1,396,454
			(Carry forward to page 1)
Notes and Comments:			