

CONTRACTORS guide to obtaining supplies for water meter pits and curb stops for Marshall Fire Re-Builds

When you are ready for supplies:

- 1) Contact Public Works Operations: Kelly 303-335-4750 to request pick up of domestic meter pit and Curb Stop supplies
- 2) Supplies can be picked up at: City Services Facility 739 S. 104th Street, Louisville
- 3) As your driver enters the parking lot, have them call Kelly 303-335-4750 for instructions on which bay to pick up supplies. Pits will be outside of bay with contractor information on it.
- 4) See pages 2-8 for meter pit specs
- 5) Once materials are installed and PRIOR TO BACKFILL, call Mark Wozny at 303-489-5750 to schedule the meter pit inspection. This covers the service from the curb stop through the water meter pit.
- 6) To have the water service inspected from the meter pit to the home, schedule the inspection with the building department through the portal [here](#).

When you are ready for the water meter installation:

The City of Louisville Public Works Operations Division will install the water meter

- 1) The home must be ready for water service.
- 2) Contact Kelly 303-335-4750 to make an appointment for the water meter installation. Please allow 7-10 days for a Public Works technician to complete the installation.

REVISIONS
DATE BY

City of
Louisville

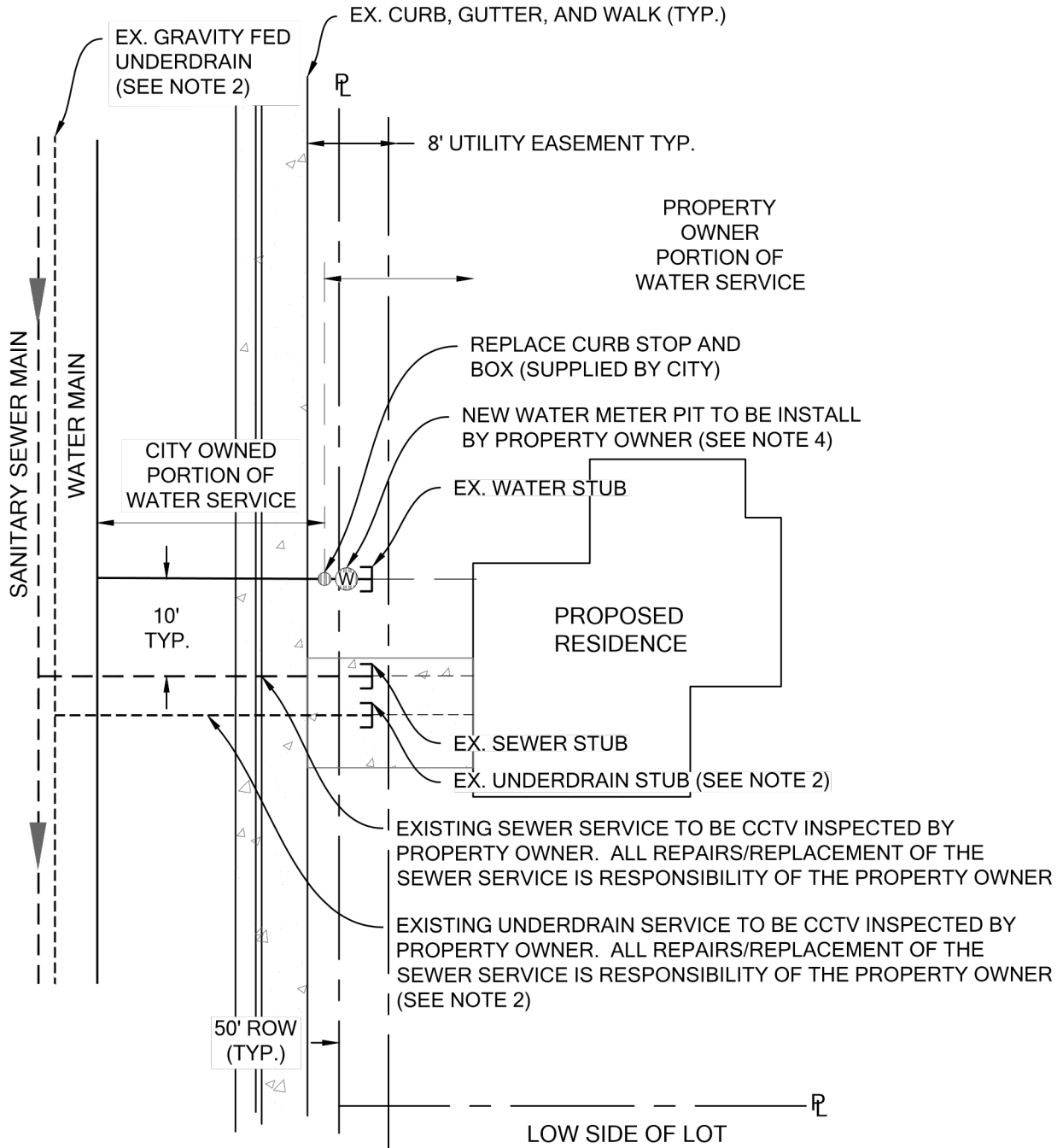
DEPARTMENT OF PUBLIC WORKS

COLORADO - SINCE 1882 MARSHALL FIRE DEMOLITION

TYPICAL LOT

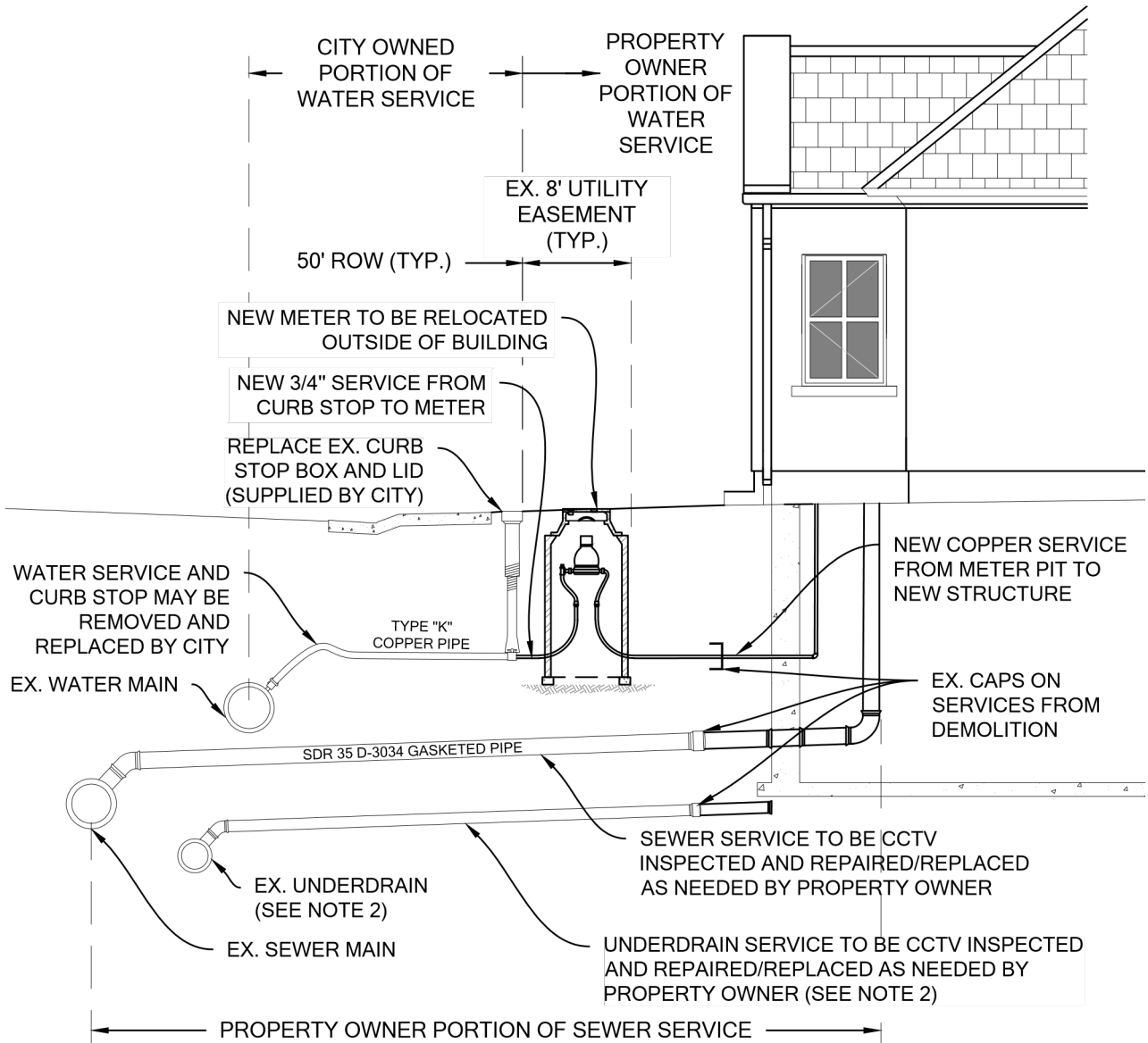
1 1

G:\STANDARDS\DETAILS\DETAILS\MARSHALL FIRE\1 TYPICAL LOT.DWG



NOTES:

1. SERVICES TO BE LOCATED BY THE CONTRACTOR.
2. GRAVITY FED UNDERDRAIN ONLY IN CERTAIN SUBDIVISIONS SEE CONSTRUCTION PLAN AS-BUILTS.
3. SEE DETAIL 6 FOR CURB STOP.
4. SEE DETAIL 5 FOR WATER METER. NEW METER PIT, FRAME, LID, SETTER (SUPPLIED BY CITY). METER TO BE INSTALLED BY CITY.
5. SEE DETAIL 3 OR 4 FOR SANITARY SEWER SERVICE REPLACEMENT.



REVISIONS
DATE BY

City of
Louisville
DEPARTMENT OF PUBLIC WORKS
COLORADO - SINCE 1882 MARSHALL FIRE

04-11-22
04-11-22

TYPICAL LOT

G:\STANDARDS DETAILS\DETAILS\MARSHALL FIRE\2 TYPICAL LOT.DWG

NOTES: WATER

1. CURB STOP SHALL BE CORRECTED PRIOR TO WATER METER INSTALLATION.
2. GRAVITY FED UNDERDRAIN ONLY IN CERTAIN SUBDIVISIONS SEE CONSTRUCTION PLAN AS-BUILTS.
3. CITY WILL SUPPLY AND INSTALL METER AFTER ALL PLUMBING IS INSTALLED, TESTED AND FLUSHED.
4. CITY TO SUPPLY PIT, COMPOSITE RING AND COVER, METER, AND METER SETTER. CITY WILL SET THE METER ONCE ALL ITEMS ARE INSTALLED BY CONTRACTOR.
5. CONTRACTOR TO SUPPLY AND INSTALL STRUCTURAL SUPPORT FOR METER AND SETTER AS DIRECTED BY CITY.

NOTES: SEWER



REHABILITATION

DRAWN BY: AF 04-11-22
APPROVED BY: CF 05-16-22

SHEET

2 OF 6

1. THE MIN. SERVICE LINE SLOPE SHALL BE 1/4" PER FOOT.
2. ALL JOINTS SHALL BE GASKETED WATER TIGHT.
3. ALL SERVICE LINES SHALL BE 4" UNLESS OTHERWISE APPROVED.

REVISIONS

City of

DEPARTMENT OF PUBLIC WORKS

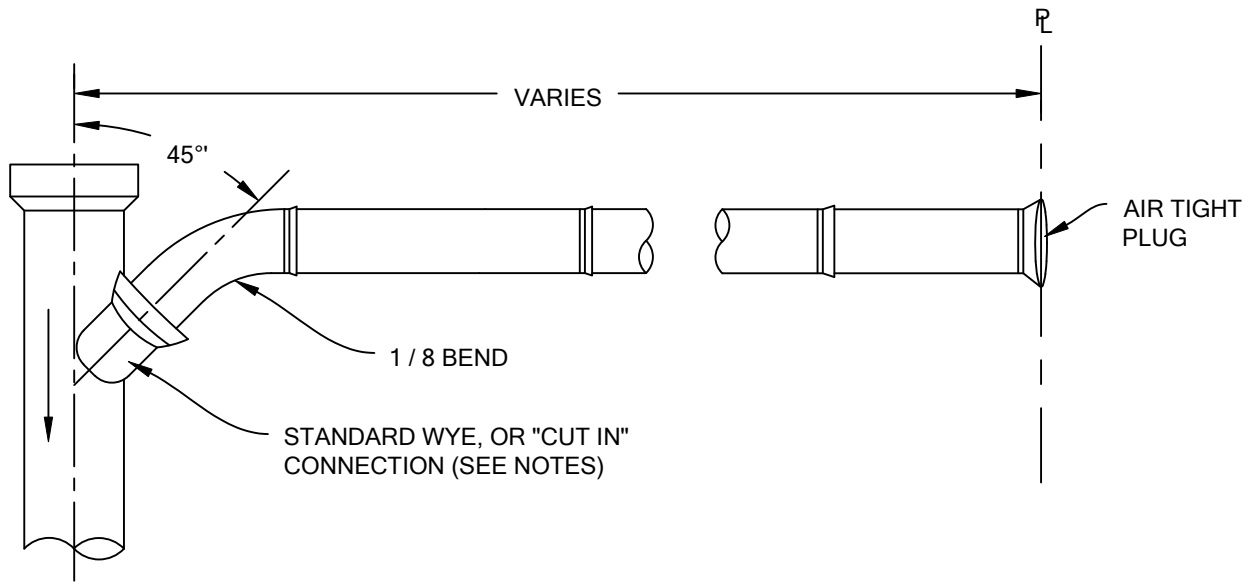
DATE BY

Louisville

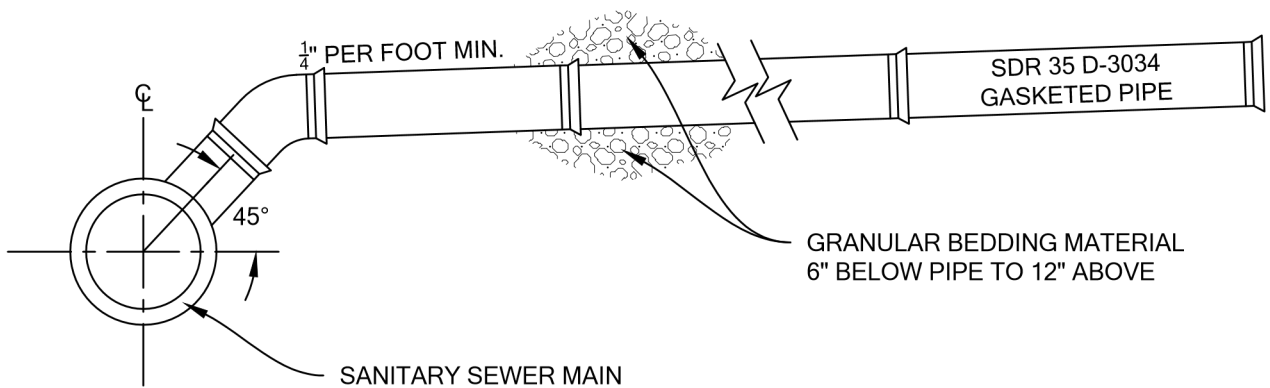
COLORADO - SINCE 1882 MARSHALL FIRE

SERVICE INSTALLATION

G:\STANDARDS DETAILS\DETAILS\MARSHALL FIRE\3 SERVICE INSTALLATION.DWG



PLAN



SECTION

NOTES:

1. BELLS SHALL NOT TOUCH THE SIDES OR BOTTOM OF THE BELL HOLE.
2. THE BARREL SECTION SHALL BE SUPPORTED THROUGHOUT ITS LENGTH.
3. SERVICE TAPS SHALL BE IN LINE WYES ON NEW MAINS, AND MACHINE TAPPED AND WYE SADDLE ON EXISTING MAINS. HAND TAPS SHALL NOT BE ALLOWED.
4. SERVICE LINES SHALL BE LOCATED FIVE FEET DOWNHILL FROM THE CENTERLINE OF THE LOT.
5. THE CURB SHALL BE MARKED WITH "S" OR "X" WHERE THE SEWER SERVICE LINE CROSSES THE CURB.
6. THE MIN. SERVICE LINE SHALL BE 1/4" PER FOOT.
7. ALL JOINTS SHALL BE GASKETED WATER TIGHT.
8. ALL SERVICE LINES SHALL BE 4" UNLESS OTHERWISE APPROVED.
9. INSPECTION REQUIRED PRIOR TO BACKFILL.



REHABILITATION

DRAWN BY: AF 04-11-22
APPROVED BY: CF 05-16-22

SHEET

4 OF 6

REVISIONS

City of
Louisville

DEPARTMENT OF PUBLIC WORKS

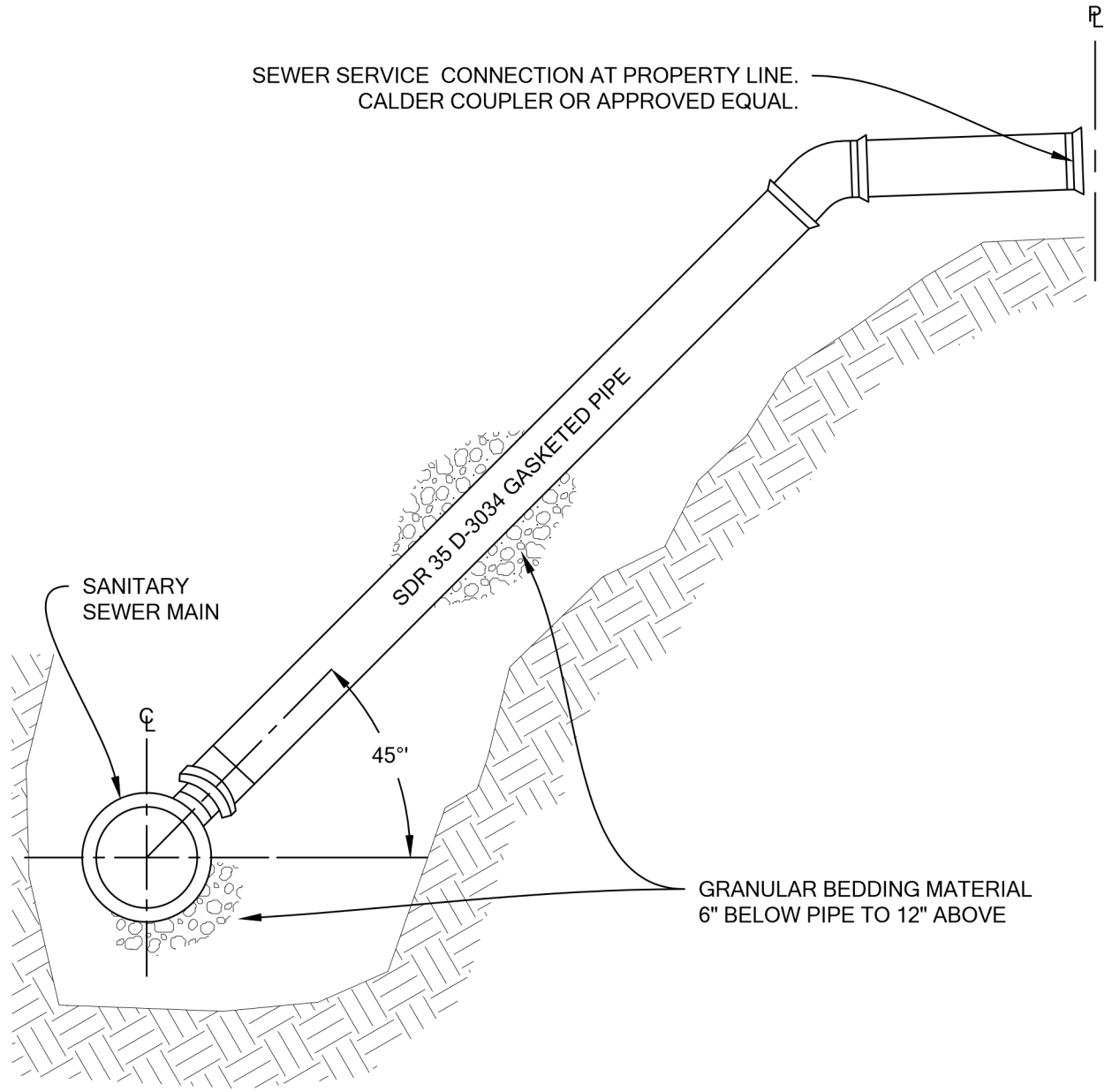
DATE

BY

COLORADO - SINCE 1882 MARSHALL FIRE

SANITARY SEWER SERVICE

G:\STANDARDS DETAILS\DETAILS\MARSHALL FIRE\9 SANITARY SEWER SERVICE.DWG



SEWER SERVICE CONNECTION AT PROPERTY LINE.
CALDER COUPLER OR APPROVED EQUAL.

SANITARY
SEWER MAIN

SDR 35 D-3034 GASKETED PIPE

45°

GRANULAR BEDDING MATERIAL
6" BELOW PIPE TO 12" ABOVE

SECTION

NOTES:



DRAWN BY: AF 04-11-22
APPROVED BY: CF 05-16-22

SHEET

5 OF 6

1. BELLS SHALL NOT TOUCH THE SIDES OR BOTTOM OF THE BELL HOLE.
2. THE BARREL SECTION SHALL BE SUPPORTED THROUGHOUT ITS LENGTH.
3. SERVICE TAPS SHALL BE IN LINE WYES ON NEW MAINS, AND SHALL BE MACHINE TAPPED AND WYE SADDLED ON EXISTING MAINS. HAND TAPS SHALL NOT BE ALLOWED.
4. THE CURB SHALL BE MARKED WITH "S" OR "X" WHERE THE SEWER SERVICE LINE CROSSES THE CURB WHERE APPLICABLE.
5. ALL JOINTS SHALL BE GASKETED WATER TIGHT.
6. ALL SERVICE LINES SHALL BE 4" UNLESS OTHERWISE APPROVED.
7. INSPECTION REQUIRED PRIOR TO BACKFILL.

REVISIONS

City of

DEPARTMENT OF PUBLIC WORKS

DATE

BY

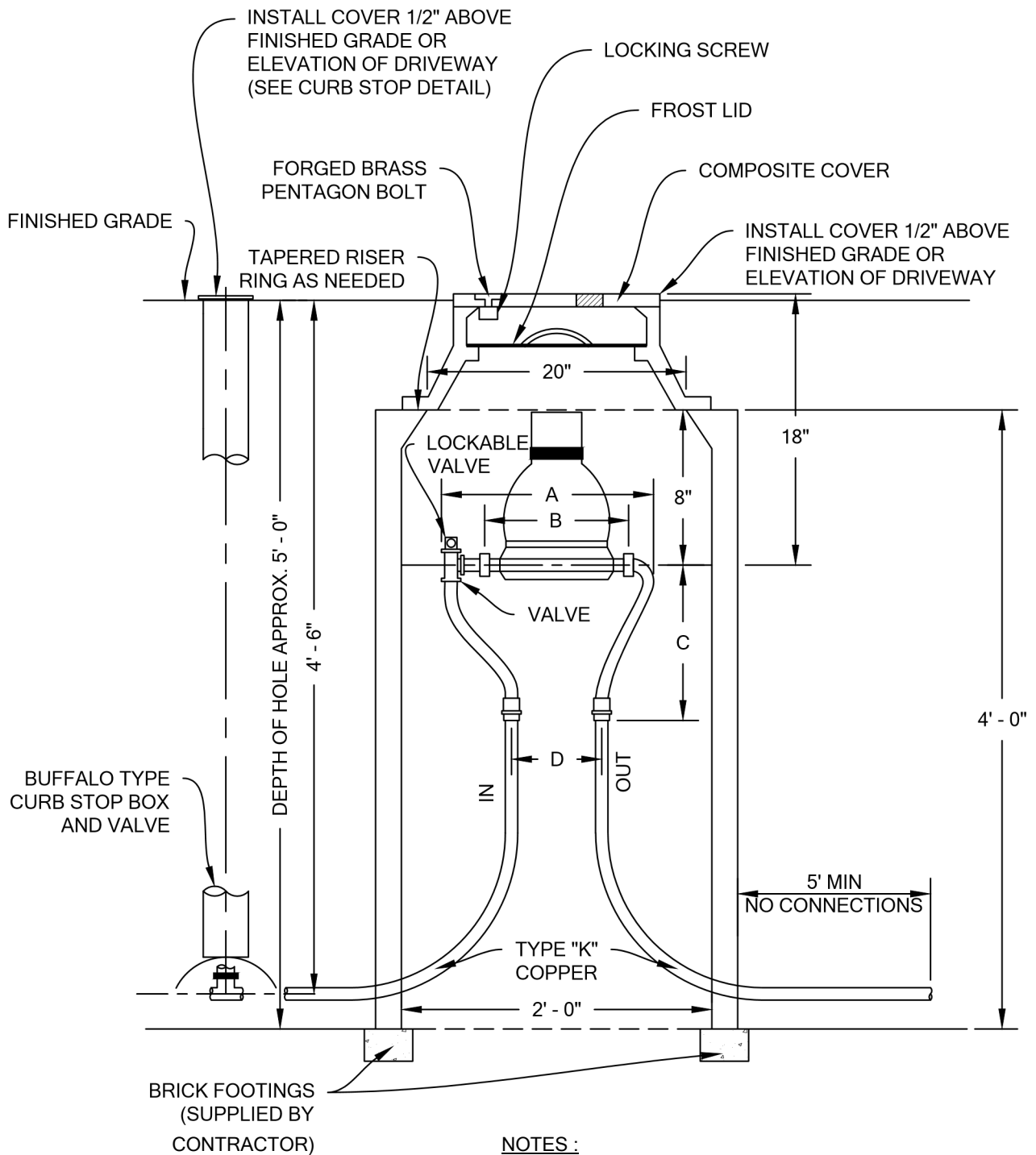
Louisville

COLORADO - SINCE 1882 MARSHALL FIRE REHABILITATION

DEEP TRENCH SANITARY SEWER SERVICE

G:\STANDARDS DETAILS\DETAILS\MARSHALL FIRE\10 DEEP TRENCH SEWER SERVICE.DWG

		DRAWN BY: AF 04-11-22 APPROVED BY: CF 05-16-22
		SHEET 6 OF 6



NOTES :

1. METER PIT SHALL BE INSTALLED 2' MINIMUM DOWNSTREAM OF THE CURB STOP.
 2. SET METER PIT COVER 1/2" ABOVE SURVEYED FINISHED GRADE OR ELEVATION OF DRIVEWAY. IF SURFACE IS NOT TO FINISHED GRADE AT TIME OF
- NOTES:**

METER SIZE	A	B	C	D
3/4"	14 1/4"	7 7/8"	8 15/16"	5"
1"	17 1/4"	11 1/8"	11 1/4"	6"



DRAWN BY: AF 04-11-22
 APPROVED BY: CF 05-16-22

SHEET

7 OF 6